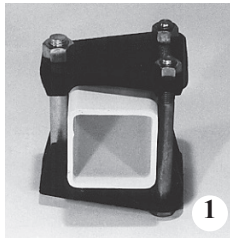


The Bigham line of Chisel Plows offers solid solutions to a variety of tough field requirements. Break up soil after harvest to prevent erosion. The Chisel Plow opens up the soil, breaks up clods and leaves an uneven surface to trap post harvest moisture. A pass with this tool breaks up hard pans caused by moldboard, disc harrow, and other traffic without turning good topsoil under. Seedbeds are also easier to prepare when the land has been chiseled after the last crop. In addition, the plow can be equipped with sweeps to clear fallow ground or to incorporate chemicals.

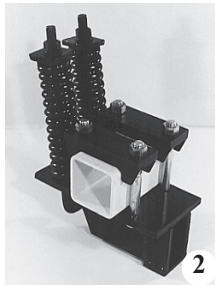


Standard Features

Options and Accessories



- Your choice of rigid or spring loaded clamps: **1** the economical two piece ductile clamp or **2** the spring loaded clamp with heavy double springs for use in rocky ground.



- Heavy forged steel shank has 26" of ground clearance for heavy trash.
- Diamond mast three bar frame Superbar II is constructed with lower bars on 25" centers. Rigid and durable for years of service.
- Cat. III wide hitch is standard on all models.

Heavy duty tool bar: 3/8" wall tubing is used instead of 1/4". All joints are padded with a 360° weld around all lower tubes. Recommended for use with twisted shovels. See page D-1

Folding tool bars: See page D-5

Gauge wheels: See page C-1, C-5

Sweeps & points: See page D-18

Mounted Finishing Tools: See page C-21

3 Soil-Flow Chisel Shank: Narrow profile shed trash and leave less of a ridging effect than traditional flat-faced shank.

Twisted Shovel: Especially suited for conservation tillage. The shovel turns the soil over, incorporating topsoil and residue to enhance decomposition.

P/N	Description	Number of Shanks	Frame Width (OAL)	Clamp Type	Approx. Ship Wt.
904-535	Chisel Plow-Three Bar Std.	15	14'10"	Rigid	1845 Lbs.
904-735	Chisel Plow-Three Bar Std.	21	21'	Rigid	2565 Lbs.
904-935	Chisel Plow-Three Bar Std.	27	27'10"	Rigid	3100 Lbs.
905-535	Chisel Plow-Three Bar Std.	15	14'10"	Spring Loaded	2340 Lbs.
905-735	Chisel Plow-Three Bar Std.	21	21'	Spring Loaded	3260 Lbs.
905-935	Chisel Plow-Three Bar Std.	27	27'10"	Spring Loaded	3990 Lbs.

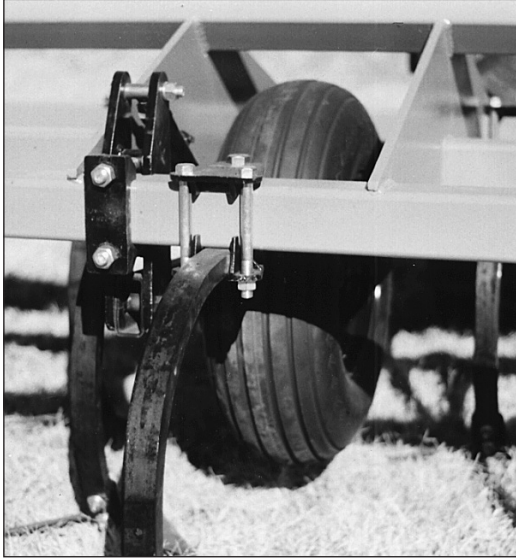
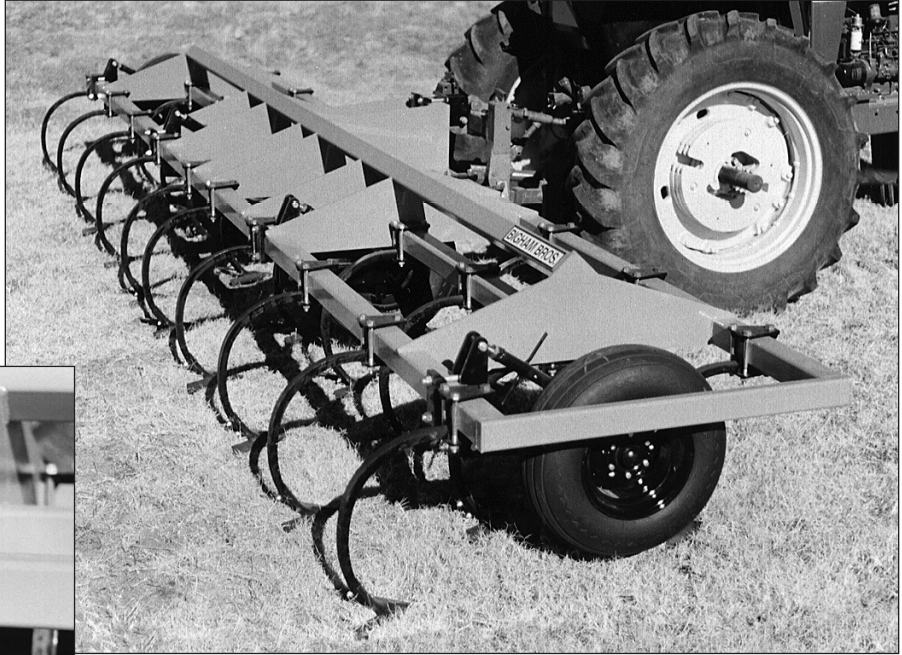
Chisel Plows Include: Tool Bar (Three Bar Superbar II), Hitch Assy. (Category III), corresponding quantities of 26" shank with rigid (904) or spring loaded (905) mounting assemblies as indicated. Standard equipment is designed for 12" shank spacing. Please specify if an alternative space is required. Gauge wheels and sweeps are pictured above, but not included. All units are priced unassembled, F.O.B. Lubbock, Texas.



Lubbock, Texas (800) 692-4449
 Carlisle, Arkansas (870) 552-7517
www.BighamAg.com

Chisel Plow (Gauge Wheel Mounting Inside the Frame)

Distribute the load of the chisel plow over the gauge wheels with the Bigham Chisel Plow with **Gauge Wheels inside the frame**. Special tool bars are designed with spaces to let you mount a gauge wheel between the front and back bars. This helps gauge wheels carry loads more efficiently.



Standard Features

- Heavy diamond mast frame Superbar II with gauge wheel spaces and Cat. III wide hitch are standard on all models.
- Heavy forged steel shank (1-1/4" x 2") has 26" of ground clearance.
- Your choice of rigid or spring loaded clamps.

Options and Accessories

Gauge Wheels: All types of single gauge wheels are compatible. See page C-1, C-5

Heavy Duty Tool Bar Option: Recommended for use with twisted shovels. See page D-1

Sweeps and Points: Ground engaging tools will complete the plow to suit your needs. Plain and hardfaced tools are available. See page D-18

Mounted Finishing Tools: See page C-21

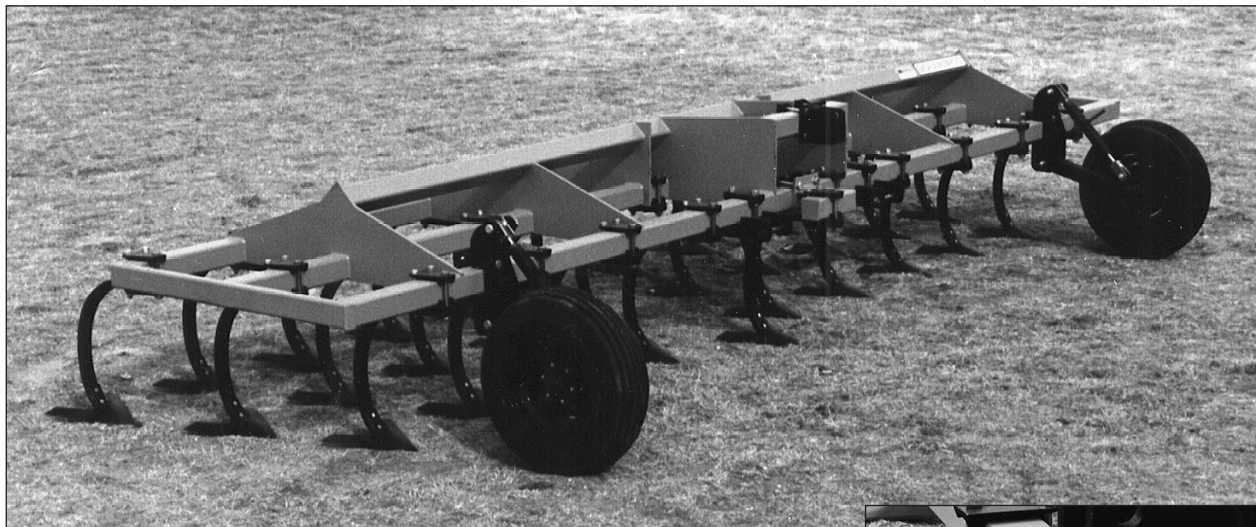
P/N	Description	Number of Shanks	Frame Width (OAL)	Clamp Type	Approx. Ship Wt.
904-521	Chisel Plow-Ga. Whl. Inside Frame	15	14'10"	Rigid	1955 Lbs.
904-721	Chisel Plow-Ga. Whl. Inside Frame	21	21'	Rigid	2670 Lbs.
904-921	Chisel Plow-Ga. Whl. Inside Frame	27	27'10"	Rigid	3200 Lbs.
905-521	Chisel Plow-Ga. Whl. Inside Frame	15	14'10"	Spring Loaded	2340 Lbs.
905-721	Chisel Plow-Ga. Whl. Inside Frame	21	21'	Spring Loaded	3360 Lbs.
905-921	Chisel Plow-Ga. Whl. Inside Frame	27	27'10"	Spring Loaded	4090 Lbs.

Chisel Plows Include: Tool Bar (Three Bar Superbar II with frame spaces for gauge wheel mounting), Hitch Assy. (Category III), corresponding quantities of 26" shank with rigid (904) or spring loaded (905) mounting assemblies as indicated. Standard equipment is designed for 12" shank spacing. Please specify if an alternative space is required. Gauge wheels and sweeps are pictured above, but not included. All units are priced unassembled, F.O.B. Lubbock, TX.

Note: Horsepower requirements are 20-30 HP per shank depending on soil type, condition, and operating depth.

Chisel Plow (8 or 12" Shank Spacing)

B-327



The Bigham Chisel Plow (8" or 12" Space) allows shank spacing on 8" or 12" centers. Shanks spaced on 8" centers with sweeps allow use of chisel plow as a field conditioner. The closer shank spacing reduces the ridging effect of sweeps.

Standard Features

- Heavy diamond mast frame—Superbar II with frame spacing option to place shanks on 8" or 12" centers. This incorporates "split stringers" in the center of the frame. Cat. III wide hitch is standard on all models.
- Heavy forged shank (1-1/4" x 2").



Options and Accessories

Heavy Duty Tool Bar Option: See page D-1

Chisel Shank Offset Kit: Provides additional trash clearance for shanks in the center of the frame. (Pictured above right)

Gauge wheels: See pages C-1, C-5

Points and sweeps: See page D-18

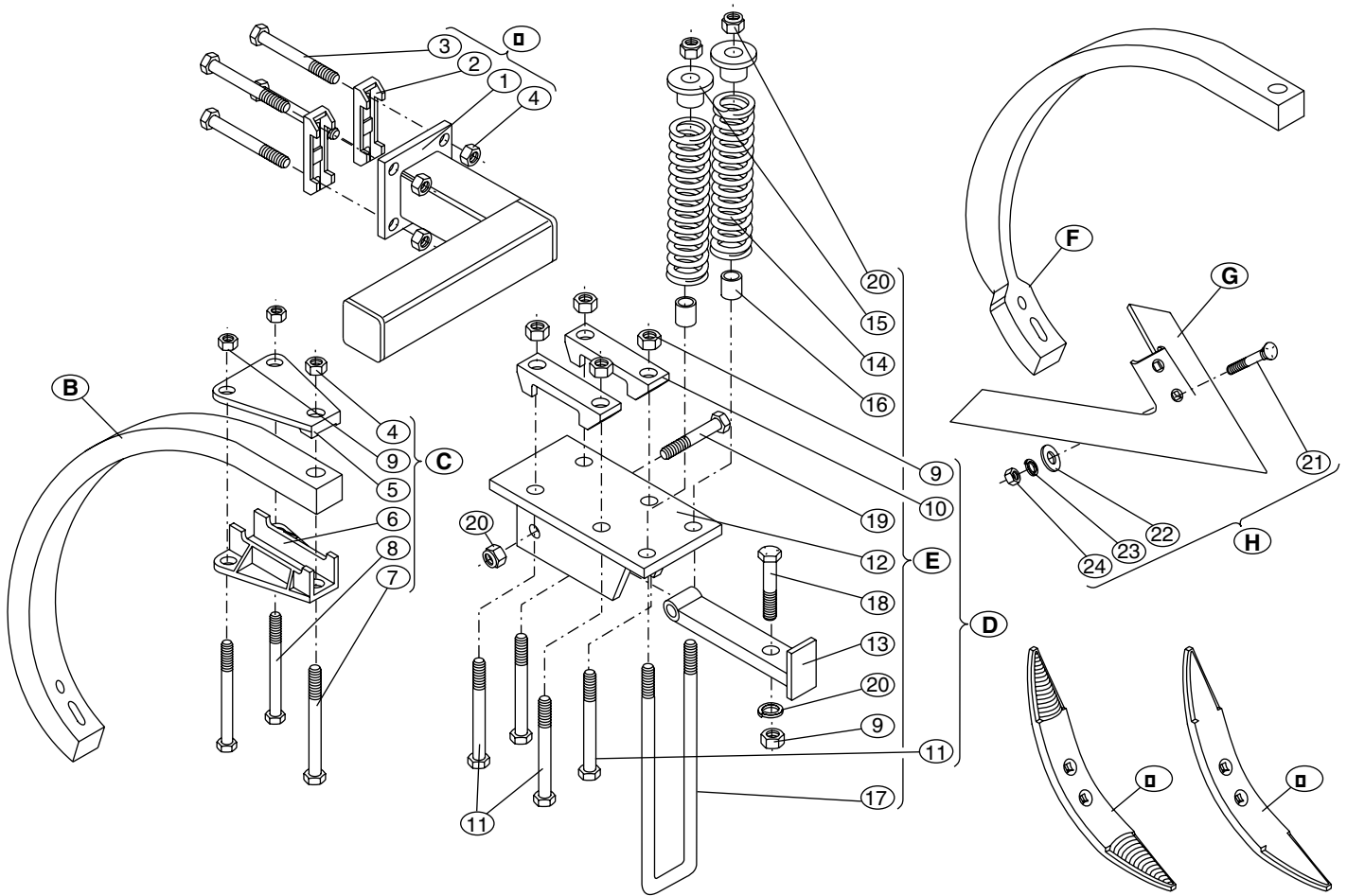
Soil-Flow Shanks: See page B-5, B-8

Mounted Finishing Tools: See page C-21

P/N	Description	Number of Shanks	Frame Width (OAL)	Clamp Type	Approx. Ship Wt.
904-755	Chisel Plow- 8" or 12" Shank Spacing 31		25'	Rigid	3045 Lbs.
904-855	Chisel Plow- 8" or 12" Shank Spacing 37		25'4"	Rigid	3445 Lbs.

Chisel Plows Include: Tool Bar (Three Bar Superbar II with special tool bar bracing for 8" shank spacing), Hitch Assy. (Category III), corresponding quantities of 26" shank with rigid mounting assemblies. Standard equipment is designed for 12" shank spacing. Please specify if an alternative space is required. Gauge wheels, chisel shank offset kit and sweeps are pictured above, but not included. All units are priced unassembled, F.O.B. Lubbock, TX.

Chisel Plow (Parts Breakdown)



ref.#	P/N	description	qty. req. Per Assy. (*optional)	ref.#	P/N	description	qty. req. assy. (*optional)
A.	814-950	CHISEL SHANK OFFSET KIT	*	16.	636-864	BUSHING, 1.125 X .750 X 1.125	2
	814-959	CHISEL SHANK OFFSET KIT (Long)	*	17.	610-0020	U-BOLT, 3/4 X 15	1
1.	707-950	STUB ONLY, OFFSET KIT	-	18.	602-1212Z	BOLT, HCS ZP GR 5 3/4 X 3"	1
	707-959	STUB ONLY, OFFSET KIT (Long)	-	19.	601-1215Z	BOLT, HCS ZP 3/4 X 3-3/4"	1
2.	628-400	CAP, CAST 4" H.D.	2	20.	615-1200Z	WASHER, LOCK 3/4"	2
3.	601-1426Z	BOLT, HCS ZP 7/8 X 6-1/2"	4	F.	631-004SF	Shank, chisel (Soil-Flow)	*
4.	611-1401Z	NUT, HEX ZP 7/8"	4			1-1/4" x 2" x 26"	
B.	631-004	SHANK, CHISEL 1-1/4 X 2 X 26"			631-014SF	Shank, chisel (Soil-Flow)	*
						1-1/4" x 2" x 32"	
C.	806-040	CLAMP ASSY., 4 X 4 FOR 1-1/4 X 2" SHANK		G.	637-014	SWEEP, CHISEL 14"	*
5.	628-401	CAP, 4" CHISEL CLAMP	1			<i>SEE PAGE D-18 FOR Full listing of sweeps</i>	
6.	628-402	BOTTOM, 4" CHISEL CLAMP	1	H.	637-350	Bolt, Nut & Washer Pack	*
7.	601-1430Z	BOLT, HCS ZP 7/8 X 7-1/2"	1	21.	608-0710Z	BOLT, PLOW ZP GR 5 7/16 X 2-1/2"	2
8.	601-1230Z	BOLT, HCS ZP 3/4 X 7-1/2"	2	22.	616-0700Z	WASHER, FLAP ZP 7/16"	2
9.	611-1201Z	NUT, HEX ZP 3/4"	8	23.	615-0700Z	WASHER, LOCK ZP 7/16"	2
D.	806-041	CLAMP ASSY., SPRING LOADED CHISEL 4 X 4 FOR 1-1/4 X 2" SHANK		24.	611-0701Z	NUT, HEX ZP 7/16"	2
10.	628-200	CAP, CAST 4" (3/4" BOLT)	2	J.	637-003	POINT, CHISEL 5/8 X 2 X 16"	*
11.	601-1226Z	BOLT, HCS ZP 3/4 X 6-1/2"	4	K.	637-004	POINT, CHISEL 5/8 X 2 X 16" H.S.	*
E.	709-000	CLAMP ASSY., Less Mounting Hdwe.		HITCHES			
12.	636-863	BODY, SPRING LOADED CLAMP	1		804-443	HITCH ASSY., cat. III wide (4 X 4")	
13.	636-861	TONGUE	1	SEE PAGE D-9 FOR PARTS BREAKDOWN AND OTHER HITCHES			
14.	633-020	SPRING	2				
15.	636-862	SPRING CAP	2				