

Mounted Finishing Tools attach to virtually any tillage implement to condition the soil surface and prepare a seedbed. Four varieties of rollers create surface finishes to match your particular soil types and tillage practices. As a general rule, each finishing tool firms the soil surface, reduces hard surface clods and seals moisture. Finishing tools feature a simple ratchet screw jack depth adjustment and universal mounting system that attaches to virtually any size tillage frame.

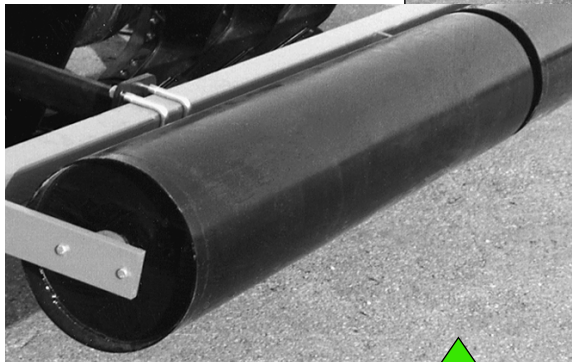
## Standard Features:

- Wide selection of mount brackets to fit any size tool bar.
- Mount assembly features ratchet jack for quick and easy height adjustment.
- Modular mount frame is constructed from 4x4x3/8" tube.
- All finishing tools are equipped with triple sealed greasable flange bearings.



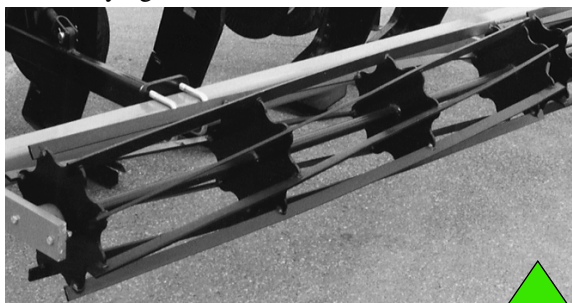
### SPIKED ROLLER:

Mounted finishing tool equipped with 12-3/4" pipe and 3/8 x 2-1/2 x 3-1/2" teeth arranged in a spiral pattern across the roller. Flat spikes enhance positive rotation of the roller and partially mix surface residue with fresh soil. This tool is popular behind a Paratill® as a one pass preparation to plant wheat and other drilled crops.



### SMOOTH PIPE ROLLER :

Large diameter (16") pipe is used to construct the smooth roller. Larger pipe rolls up and over uneven terrain to leave a smooth, consistent surface. Surface residue may be flattened without burying stalks.



### BASKET (SPIRAL BLADE CRUMBLER) :

Spiral blades on mounted basket aggressively engage the soil to break up clods, seal moisture and even incorporate chemicals. Basket leaves a surface condition to resist crusting and reduce soil and water erosion. Eight blades are spread over a 16" diameter to operate in moist soil conditions.

### CULTIPACKER :

Cast rings float on a pipe to firm the surface over an uneven contour such as beds. Beds are maintained, and directional teeth on each ring pulverize clods and crimp stalks to the soil.



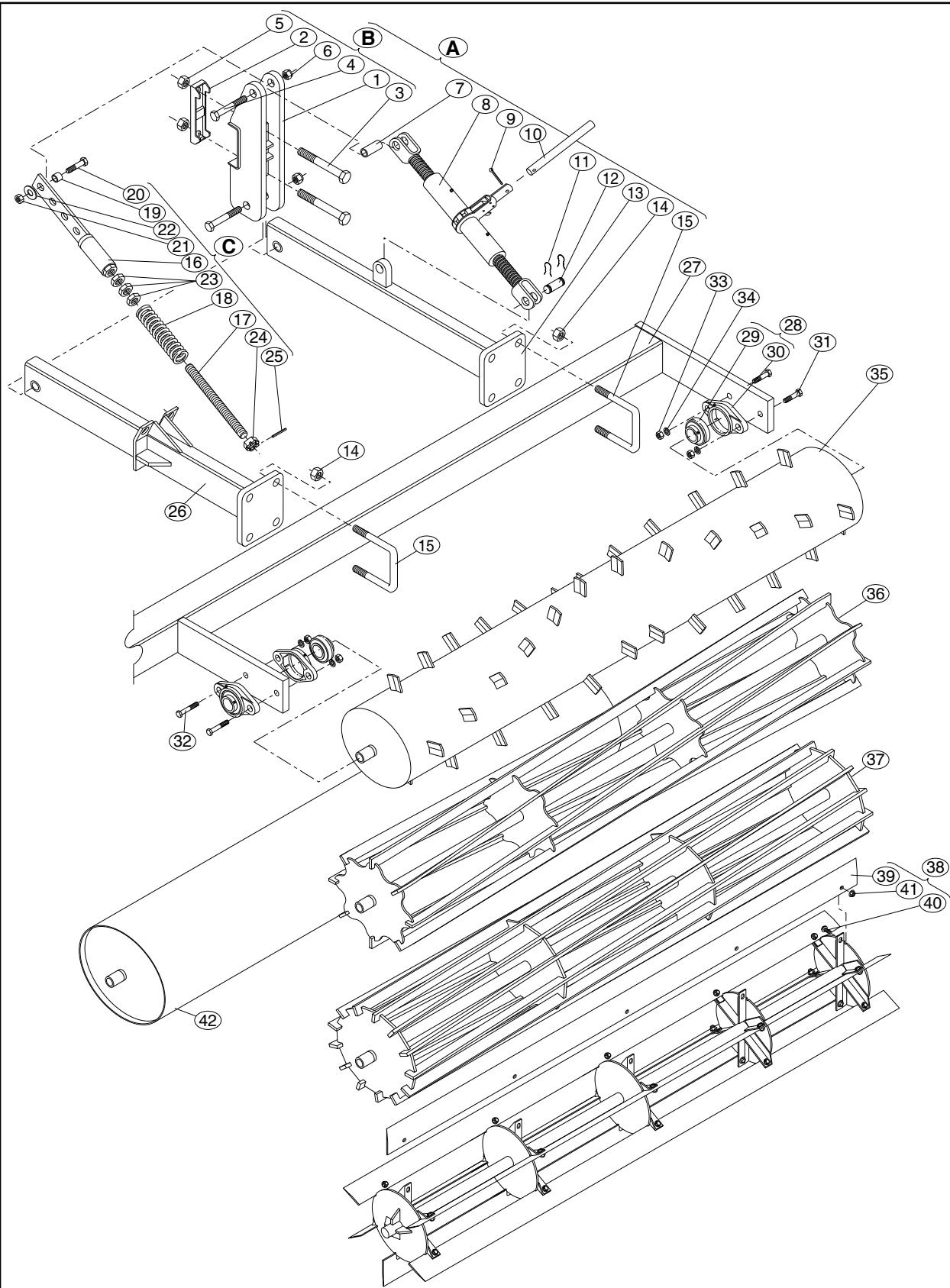
### Options:

- Choose the roller option that best fits your desired field finish.
- Add mounting assemblies for structural support if you wish to use any particular roller as a depth support.
- Drag chain may be added for floating linkage, or optional spring equipped adjusting jack may be added for finishing tool protection.
- All finishing tools are available with a pull package and hydraulic transport wheels.



Lubbock, Texas (800) 692-4449  
Carlisle, Arkansas (870) 552-7517  
[www.BighamAg.com](http://www.BighamAg.com)

MOUNTED FINISHING TOOLS  
(PARTS DIAGRAM)

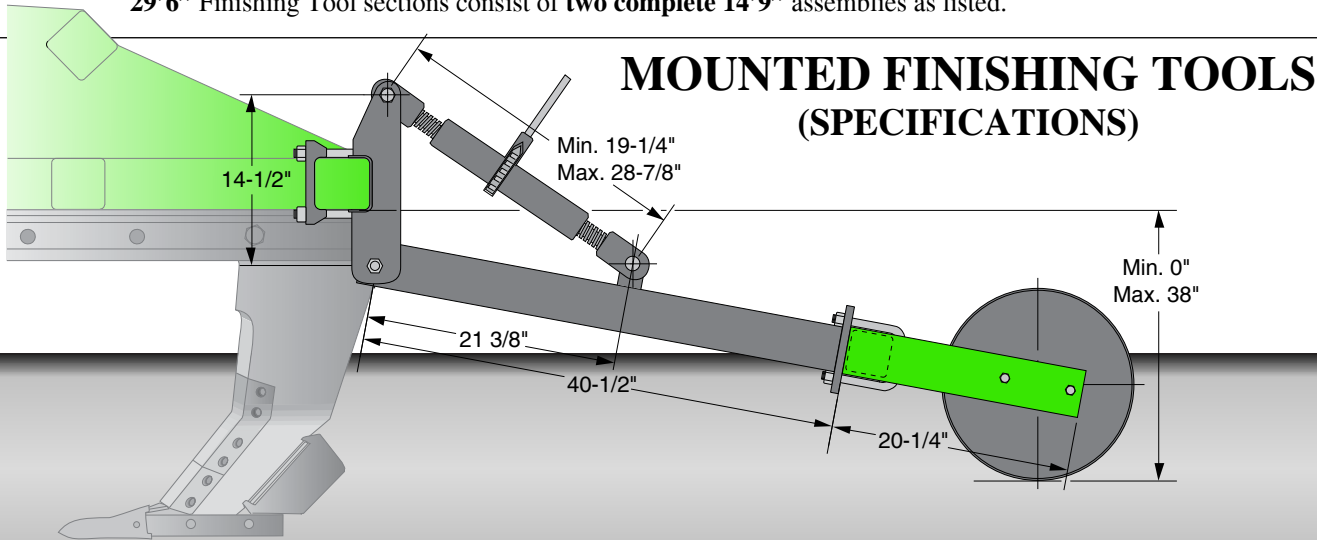


Other configurations available. Call for details.

MOUNTED FINISHING TOOLS  
(PARTS LIST)

REF#	P/N	DESCRIPTION	QTY. REQ. PER ASSY. (* AS REQ.)	REF#	P/N	DESCRIPTION	QTY. REQ. PER ASSY. (* AS REQ.)
A.887-004		MOUNT ASSY.,FIN TOOL/4X4 40" S.J.	*	25.	617-060	PIN, ROLL ZP 1/4 X 1-1/2"	1
				26.	687-236	ARM/PLATE, FIN. TOOL (SPRING) 40"	1*
				26.	687-234	ARM/PLATE, FIN. TOOL (SPRING) 33"	1*
		887-007 MOUNT ASSY.,FIN TOOL/4X7 40" S.L.	*	27.	721-015	FRAME, ROLLER MOUNT 14'9"	1
					721-016	FRAME, ROLLER MOUNT 22'	1
B.805-104		MOUNT ASSY., 4X4" STD. GW	1	28.	622-085	BEARING ASSY 1-1/2" FLANGE	4/6*
		805-106 MOUNT ASSY., 4X7" STD. GW	1	29.	622-086	BEARING, 1-1/2 #UG224E3L FILLER	-
1.	705-047	BRACKET, GA. WHL. 4X4" (STD)	1	30.	622-090	HOUSING, 2 HOLE FLANGE CC	-
2.	628-400	CAP, 4" 7/8 & 1" BOLT HOLES	1	31.	602-0810Z	BOLT, HCS 1/2X2-1/2" GR5 ZP	4
3.	601-1428Z	BOLT, HCS 7/8X7" GR2 ZP	2*	32.	602-0813Z	BOLT, HCS 1/2X3-1/4" GR5 ZP	2/4*
		FOR 4X4" MOUNT ASSY.		33.	611-0801Z	NUT, HEX ZP 1/2"	6/8*
	609-1440Z	BOLT,HMB 7/8"X10" (GR2) ZP	2*	34.	615-0800Z	WSHR, LOCK ZP 1/2"	6/8*
		FOR 4X7" MOUNT ASSY.					
4.	601-1218Z	BOLT, HCS 3/4X4-1/2" GR2 ZP	2	35.	721-100	ROLLER, 7" SPIKED 12-3/4" DIA.	2/3*
5.	611-1401Z	NUT, HEX ZP 7/8"	2	36.	685-860	BASKET WELDMENT, 86" /16"D.8 BL.	2/3*
6.	613-1200Z	NUT, HEX NYLOCK ZP 3/4"	2	37.	685-861	BASKET WELDMENT, 86" /16"D.13 BL.	2/3*
7.	617-250	BUSHING, CLEVIS STD G.W. JACK	1	38.	708-072	CHOPPER REEL,6BL 86" (16"DIA)	2/3*
8.	705-080	CRANK, GAUGE WHEEL (REG & HD)	1	39.	691-053	BLADE,CHOPPER REEL 86"	6
9.	617-026	PIN, COTTER 1/4X2"	1		603-0705	BOLT,WHIZLOCK 7/16"X1-1/2" GR8	30
10.	617-110	TUBE, 7/8X12" (G.W. JACK HANDLE)	1		614-0701Z	NUT,HEX WHIZLOCK ZP 7/16"	30
11.	617-107	HAIRPIN 3/16X2"; 1" I.D. (G.W.)	4				
12.	617-160	PIN, CLEVIS ZP 1X2" USBL (G.W.)	2				
13.	687-250	ARM/PLATE, ROLLER MOUNT	1				
14.	611-1401Z	NUT, HEX ZP 7/8"	4				
15.	610-0035	U-BOLT, 7/8" FOR 4X4" BAR GR5	2	42.	721-034	PIPE ROLLER, 16" O.D. X 86"	2/3*
C.706-500		SCREW JACK ASSY., BED COND.	*				
16.	636-330	SCREW JACK HOUSING	1				
17.	636-340	SCREW JACK STUD, 1X14 1/2"	1				
18.	633-030	SPRING, SCREW JACK	1				
19.	636-310	BUSHING, CRANK MT 5/8" ID	1				
20.	602-1010Z	BOLT, HCS ZP GR5 5/8 X 2-1/2"	1				
21.	611-1001Z	NUT, HEX ZP 5/8"	1				
22.	615-1000Z	WASHER, FLAT ZP 5/8"	1				
23.	614-1601Z	NUT, HEX JAM ZP 1"	3				
24.	614-1609Z	NUT, HEX SLOTTED 1"	1				

Note: 14'9" Finishing Tool section assemblies require **two** rollers, baskets or gangs per section. 22' Finishing Tool section assemblies require **three** rollers, baskets or gangs per section  
29'6" Finishing Tool sections consist of **two complete 14'9"** assemblies as listed.



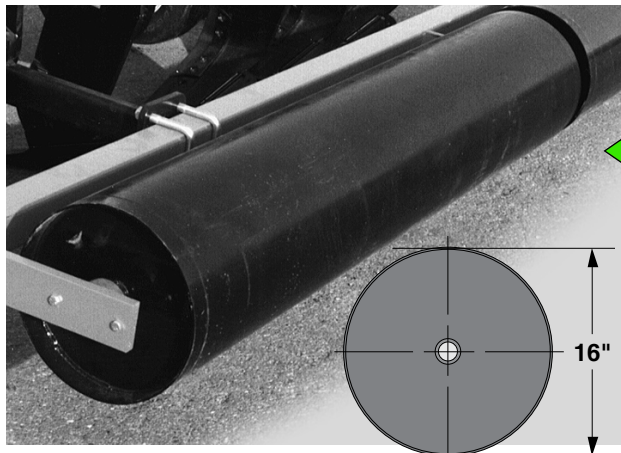
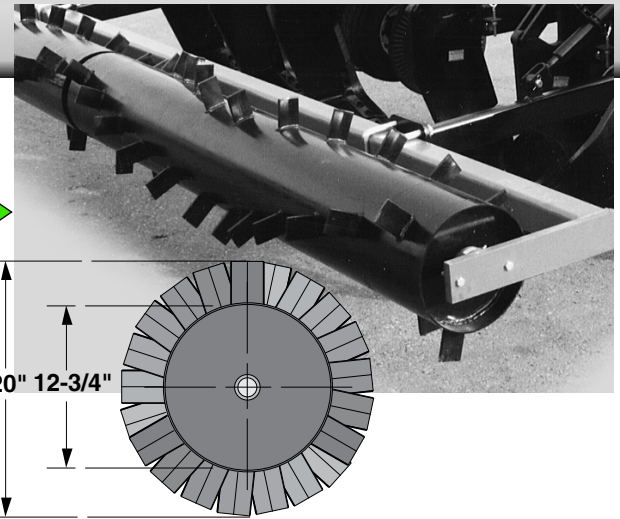
MOUNTED FINISHING TOOLS  
(SPECIFICATIONS)



### Spiked Rollers

P/N	Frame Width	Roller Width/ Pipe Dia.	# of Rollers	# of Mount Arms	Approx. Ship Wt.
887-400	14'9"	86"/12-3/4"	2	2	1260 Lbs.
887-405	22'	86"/12-3/4"	3	3	1900 Lbs.
887-410	29'6"	86"/12-3/4"	4	4	2520 Lbs.

Mounted Spiked Rollers Include: 1. Frame assembly with bearings and rollers as indicated 2. Mounting brackets with assembly hardware for 4x4" tool bar 3. Screw jack assembly with hardware 4. Frame mount arm (41") with mounting U-Bolts to attach frame. Mounting assemblies are available for any size frame. Please specify if frame mount is required for other than 4x4" tool bar.



### Smooth Rollers

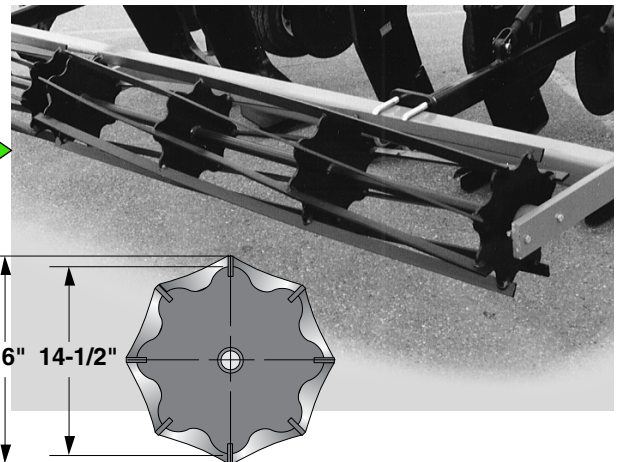
P/N	Frame Width	Roller Width/ Pipe Dia.	# of Rollers	# of Mount Arms	Approx. Ship Wt.
887-401	14'9"	86"/16"	2	2	1250 Lbs.
887-406	22'	86"/16"	3	3	1875 Lbs.
887-411	29'6"	86"/16"	4	4	2500 Lbs.

Mounted Smooth Rollers Include: 1. Frame assembly with bearings and rollers as indicated 2. Mounting brackets with assembly hardware for 4x4" tool bar 3. Screw jack assembly with hardware 4. Frame mount arm (41") with mounting U-Bolts to attach frame. Mounting assemblies are available for any size frame. Please specify if frame mount is required for other than 4x4" tool bar.

### Mounted Baskets

P/N	Frame Width	Basket Blade Width/ Dia.	# of Rollers	# of Mount Arms	Approx. Ship Wt.
887-402	14'9"	86"/16"	2	2	890 Lbs.
887-407	22'	86"/16"	3	3	1350 Lbs.
887-412	29'6"	86"/16"	4	4	1780 Lbs.

Mounted Baskets Include: 1. Frame assembly with bearings and baskets (spiral blade crumblers) as indicated 2. Mounting brackets with assembly hardware for 4x4" tool bar 3. Screw jack assembly with hardware 4. Frame mount arm (41") with mounting U-Bolts to attach frame. Mounting assemblies are available for any size frame. Please specify if frame mount is required for other than 4x4" tool bar.



### Mounted Cultipackers

P/N	Frame Width	Roller Width/ Ring O.D.	# of Rollers	# of Mount Arms	Approx. Ship Wt.
887-403	14'9"	82"/16"	2	2	2300 Lbs.
887-408	22'	82"/16"	3	3	3450 Lbs.
887-413	29'6"	82"/16"	4	4	4600 Lbs.

Mounted Cultipackers Include: 1. Frame assembly with bearings, tube and rings as indicated 2. Mounting brackets with assembly hardware for 4x4" tool bar 3. Screw jack assembly with hardware 4. Frame mount arm (41") with mounting U-Bolts to attach frame. Mounting assemblies are available for any size frame. Please specify if frame mount is required for other than 4x4" tool bar.

