

MT-1

MegaTill Family

The logo for BIGHAM, featuring a stylized green leaf icon to the left of the word "BIGHAM" in a bold, black, sans-serif font.

The MegaTill offers unlimited flexibility to apply precision tillage to your bedded or flat fields, breaking up hardpan and compaction to provide a healthy subsoil environment

Use as a total loosening tool, to loosen beds or improve water absorption in furrows

- Highly configurable configurations, frame types and options to excel in any conditions
- Available with Heavy Duty shanks (MegaTill HD) for extreme conditions and with winged points (MegaTill MAX) to rip a wider path and fracture more soil
- Auto reset and shear bolt options also offered



Lubbock, Texas
Carlisle, Arkansas

(800) 692-4449
(870) 552-7517

www.BighamAg.com



MegaTill

- MegaTill Sub-Soilers are equipped with a heavy diamond mast frame to allow coulter and shank placement at virtually any row spacing.
- Category III 4" drop hitch provides ground clearance for long shanks.
- Spring loaded 20" fluted swivel coulters and 30" and 36" shanks with double bar reinforced clamp packages included on standard Sub-Soilers to allow top of bed placement.
- Coulters provide up to 1200 pounds of residue slicing pressure per coulter blade.
- 1" x 8" x 36" Formally 400 steel shank excels in the harshest field conditions.
- The front of each shank is protected with a replaceable chromium carbide wear shin with a shaped front edge to reduce drag and may be rotated for extended wear.
- Shanks are also equipped with a chromium carbide point for up to four times the wear of traditional hard-faced points. All shanks are drilled to accept root cutting knives.
- 36" ground clearance ensures optimum plowing depths to provide crop clearance.
- Double bar reinforced clamps spread the shank load and stress between two frame members. Shank may be mounted in the front or back position of each clamp. Shear bolts provide protection if an underground obstruction is encountered.

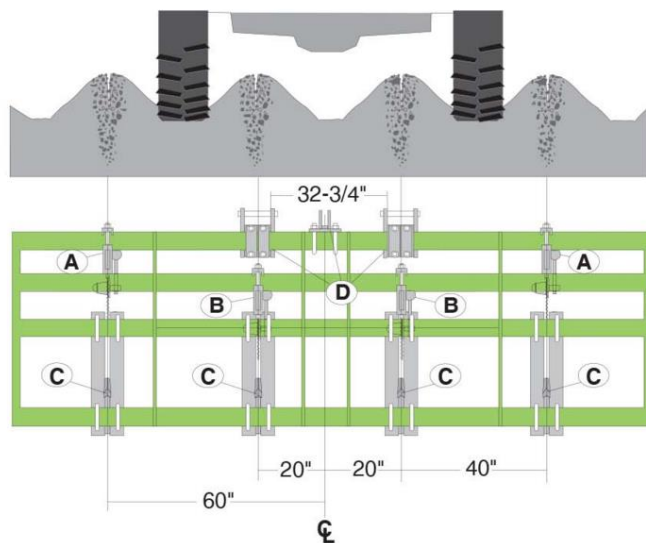


Highly versatile Tillage tool

- Run as a total loosening tool in flat fields or as a versatile tool in bedded fields:

MegaTill Sub-Soiler

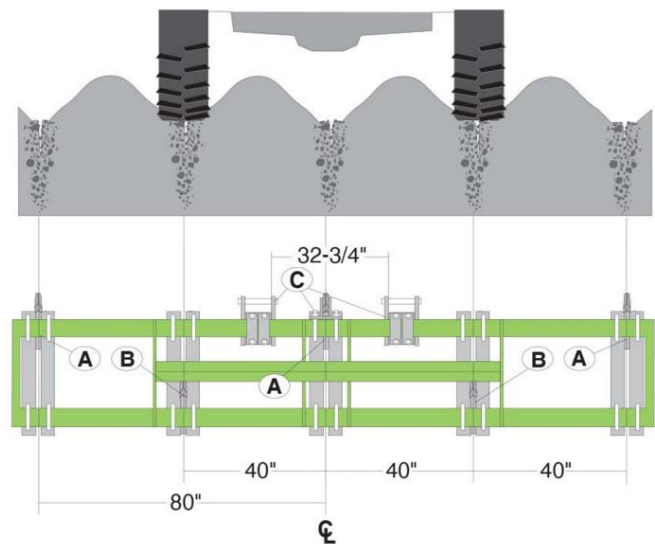
4 Shank on with sprung loaded coulters
(Top of Bed Shank Placement)



Sub-Soiler shanks loosen an area in the middle of each crop bed, providing a prepared area for crop root growth. Optional knives may be attached to undercut each bed, killing and uprooting crop stalks in one pass.

MegaTill Inter-Row Sub-Soiler

5 Shank on two bar frame
(Bottom of Furrow Shank Placement)



Inter-Row Sub-Soilers rip the furrow between crop rows, shattering compaction and improving water absorption and reducing runoff—particularly under center pivot irrigation systems

MegaTill Family



MegaTill HD

- High clearance HD Shanks penetrate furrows or beds to the depths you want to plow.
- Durable construction similar in design to our Paratill® Leg design gives long life in heavy and hard soils.
- Replaceable chromium carbide shins reduce shank wear with the front portion of the reversible shin shaped to reduce drag and field clodding.



MegaTill HD with Listers, knife plates and 1" x 3" Inter-Row rippers



Five Leg MegaTill HD MAX Auto Reset linkage



Winged point

MegaTill MAX

- Maximum hardpan shatter to provide a healthy subsoil environment
- New winged points on our expanded MegaTill MAX foot rip a wider path and fracture more soil.
- Available in shear bolt and new Auto Reset models



Seven leg MegaTill MAX with optional Pull-Type package



Your Bigham Representative:

