



Model 888 Cultivator/Lister

Operator's & Repair Parts Manual

**For Models: 760-802
760-807
760-808**

**Gang Bundle Assembly Model 888 Cultivator 4x7"
Gang Bundle Assembly Model 888 Cultivator 7x7"
Gang Bundle Assembly Model 888 Cultivator 7x7"
(Wrap Around)**



Do Not Use or Operate This Equipment



Until You Have Read and Understood This Manual

The purpose of this manual is to explain maintenance requirements and adjustments which are necessary for the most efficient operation of the machine. Read this manual thoroughly and completely before using your machine. Keep this manual handy for reference when questions arise.

Should you have questions or difficulties which your dealer or representative are unable to answer, please call or write:

**Bigham Brothers, Inc. 705 E. Slaton Rd. P.O. Box 3338 Lubbock, TX 79452
Telephone: (806) 745-0384 Fax: (806) 745-1082**



**SAFETY FIRST
PREVENT ACCIDENTS BY "THINKING SAFETY"
IN UNLOADING, SETTING UP, MOVING, STORAGE
AND OPERATING ALL EQUIPMENT.**



BIGHAM BROTHERS, INC.

806-745-0384 • 705 E. Slaton Road • P.O. Box 3338 • Lubbock, Texas 79452

© 2012 Bigham Brothers, Inc. This document may not be reproduced in whole or in part without prior written permission of Bigham Brothers, Inc.

\$7.00 P/N B12-18C Revised 12-19-2012. Printed in the U.S.A. Specifications and design subject to change without notice.

BIGHAM BROTHERS, INC.

A MESSAGE TO THE OWNER AND OPERATOR:

This machine was carefully designed and manufactured to give you dependable service. To keep it running efficiently, read the instructions in this Operator's Manual. Check each item and acquaint yourself with the adjustments required to obtain efficient operation and maximum performance. Remember, the machines performance depends on how you operate and care for it.

After the operating season, thoroughly clean your machine and inspect it. Preventive maintenance saves time and pays dividends. Your dealer has original equipment parts which assure proper fit and best performance. Record the model number, serial number and date of purchase in the space provided on this page. Your dealer needs this information to give you efficient service when you order parts or attachments. The model number and serial number appear on the identification plate on the front left side of the tool bar mast.

The Warranty on your machine is included with this manual. Your dealer will review both this manual and the warranty with you when you take delivery of your machine.

WARRANTY

Bigham Brothers, Inc. warrants all products of its manufacture to be free from defects in materials and workmanship for a period of six months from date of delivery to the retail purchaser. Parts assumed to be defective must be returned F.O.B. Lubbock, Texas for our inspection or inspected in the field by our authorized representative. Our obligation under this warranty is limited to replacement or repair of the defective part and does not cover other damages to persons or property. Other than the aforesaid, no warranties of merchantability or fitness for a particular purpose will apply. We do not assume liability for altered or remanufactured components or machines or applications beyond their intended use. Some states do not allow limitation of how long an implied warranty lasts, or exclusions of, or limitations on relief such as incidental or consequential damages, so the above limitations or exclusion may not apply to you. This warranty gives you specific legal rights and you may have other rights which vary from state to state.

Warranty does not cover damage due to abuse, neglect, collision, towing, pulling, normal wear and tear or any other factor beyond the control of the manufacturer. Tool bars that are bent, bowed or that have been welded on or modified in any way are specifically excluded from any warranties.

LIMITED LIFETIME WARRANTY ON TOOL BAR CLAMPS

Bigham Brothers, Inc. will replace any ductile iron clamp body that breaks or cracks under normal use for as long as the original purchaser owns them. This includes all replaceable bolt ductile iron clamps sold by Bigham Brothers, Inc. after December 31, 1987.

Clamps that fail should be returned to Bigham Brothers, Inc. freight prepaid along with caps, bolts, set screws and nuts for evaluation. If found to have failed under normal operating conditions, a new clamp body will be returned along with your old caps, bolts, set screws and nuts. Only clamps that have been used with Grade 2 bolts of the proper size will be replaced. All other provisions of the above warranty apply.

Contents

PageDescription

Inside Front CoverWarranty

1.....Table of Contents

2.....Safety Precautions

3.....Introduction

4.....Description

5.....Mount Gangs to Tool Bar

6.....Set Operating Depth: Front Tire or Coulter

7.....Center Mounted Swivel Coulter

8.....Tooling Bar Options

9.....Rear Shanks

10.....Mount Spring Loaded Chisel Clamp

11.....Mount Barring-Off Disc Hubs

12.....Attaching Cultivator to Tractor

Parts Breakdowns

13.....Gang and Parallel Linkage (Wrap and Split Mount)

14.....Gang and Parallel Linkage (Rear Mount)

15.....Adjustable Swivel Coulter-Model Years 2012-Current

16.....Gang and Parallel Linkage To 2012 (Wrap and Split Mount)

17.....Gang and Parallel Linkage To 2012 (Rear Mount)

18.....Adjustable Swivel Coulter-Model Years 2011-Current

19.....Adjustable Swivel Coulter-Model Years 2010-2011

20.....Swivel Coulter-Model Years 2011-Current

21.....Swivel Coulter-Model Years 2010-2011

22.....Rigid Coulter-Model Years 2011-Current

23.....Rigid Coulter-Model Years 2010-2011

24.....Wheel and Tire Bundle

25.....Wheel and Tire Bundle To 2012

26.....Barring-off Disc Bundle, Quick Adjust

27.....Barring-off Disc Bundle, 4" Tooling Tube

28.....Rigid Chisel Shank

29.....Spring Reset Chisel Clamp

30.....Bedding and Cultivation Tools

31.....Crop Hood Assembly

32.....Crop Shield Assembly

Safety Precautions:



Be alert when you see this symbol in the instructions.

It warns of a hazard which might lead to injury.

It means: “Attention! Become alert! Your Safety Is Involved!”

Before Use:



DO NOT operate this equipment until you



have read and understood this manual.

- * Assure operators have read and are familiar with the instructions contained in the Operator's Manual
- * If working on the Model 888 Cultivator, make sure it is level and stable. Proper stands should be lowered and secured. Use support blocks when necessary. The work area should be on a level, load bearing surface, e.g. concrete floor. NEVER, NEVER work under a Cultivator while it is supported by only the tractor's hydraulics.
- * Consult the “Tractor Manufacturers Manual” for instructions on safe mounting of implements and operating methods.
- * Never stand between the Cultivator and tractor with engine running.

During Use:



- * Check and tighten all bolts after 30 minutes of initial operation and after adjustments have been made.
- * Assure the Model 888 Cultivator is correctly attached to the tractor.
- * Be alert to underground obstructions, e.g. large stones, tree roots, cables, pipe lines, etc. Should an obstruction be encountered, **STOP IMMEDIATELY AND INVESTIGATE.**

⚠ NOTIFY THE APPROPRIATE AUTHORITY IF BURIED CABLES OR PIPELINES ARE SUSPECTED. Non-hazardous obstructions should be removed before continuing operation.

- * Keep operating speeds at a safe level.
- * Never allow anyone to ride on the Model 888 Cultivator during operation.
- * Never travel in reverse with the Model 888 Cultivator in the operating position.
- * Never carry out adjustments or repairs to a mounted Model 888 Cultivator unless the tractor engine is stopped and the Model 888 Cultivator is firmly supported or lowered to the ground.
- * Inspect the Model 888 Cultivator for wear or damage on a regular basis.
- * Check all nuts, bolts and other fasteners for tightness on a regular basis. Replace worn fasteners as needed.
- * Carry out maintenance and lubrication procedures as detailed in this manual.
- * When disconnecting the Model 888 Cultivator do so on a level, hard surface. Assure it is left in a stable position with proper stands in the correct position.

Always:



- * Wear gloves and safety footwear when handling worn parts with sharp edges.
- * Assure the Model 888 Cultivator is not operated by untrained persons.
- * Use the Model 888 Cultivator only for the purpose for which it was designed and tested, and always according to the instructions contained in this manual.
- * Reduce speed when transporting over uneven or rough terrain.
- * Place a “Slow Moving Vehicle” emblem on the rear of the unit before driving on open roads.
- * Keep hands, feet and clothing away from all moving parts.
- * Exercise care when adjusting gangs, disc coulters or other tooling. The assemblies are heavy and may have sharp edges.

“Left” and “Right” of the machine refers to the side when standing behind the Cultivator and facing the tractor.



**BE A SAFE OPERATOR, THINK BEFORE OPERATING.
READ ALL INSTRUCTIONS BEFORE
ASSEMBLY OR OPERATION OF THE CULTIVATOR!**



Model 888 Cultivator on Rigid Tool Bar

INTRODUCTION:

The Model 888 Cultivator/Lister has two primary functions: cultivation of growing crops and pre-plant bedding operations. Independent parallel-linked gangs assure consistent operation over uneven ground.

When configured as a cultivator, a combination of sweeps and barring-off discs clear weeds from areas between rows of growing plants.

For bedding operations, busters, lister bottoms, or bedding sweeps are mounted on the shank at the rear of each gang.

In irrigation trench operation, a small buster, shovel, or point replaces the buster or bedding sweep used in bedding operations.

BIGHAM BROTHERS, INC.

The BIGHAM BROTHERS Model 888 Cultivator is equipped with an uneven number of parallel linkage tooling gangs—one for each crop seedbed plus one. Normal configuration includes a leading trash-cutting coulter with depth band or height adjustable tire, a center swivel coulter, sweeps or barring-off discs, and a rear chisel shank with bedding or cultivating tools.

Gang Placement

Check/set row spacing from the center line at the point of the sweep, buster, or irrigation shovel—not at the top of the clamp on the tool bar. Manufacturing tolerances may affect position at the end of the tool. Set center gang between two stringer plates. Ensure center of sweep or buster is on center. Run a tape from center point and ensure each point is the right distance from this point. For example, for 38" rows, points should be at 38", 76", 114", 152", 190", 228", etc. from the center point. Do not measure one point to the next, because any error can be compounded to the next gang.

Set chisel shanks all the way to the top by adjusting the 4x4 mounting tube to its upper-most position.

Mount Gangs to Tool Bar

Two types of gang mounting assemblies are available: the Rear Mount assembly and the Wrap-around assembly. Each is fastened by use of two u-bolts for each gang. See pictures 1-5. Position each clamp so the gang is centered between the crop rows. Note alignment cuff on rear mounted clamp assembly. If equipped with screw jack, fill the jack cavity with grease once each season through the grease zerk in picture three.



Picture 1



Picture 2



Picture 3



Picture 4



Picture 5

Set Operating Depth: Front Tire or Coulter

Gang operating height is set by either an adjustable depth control tire or one of several front-mounted residue cutting coulters. Rigid and Swivel Coulters mount directly to the gang and do not adjust vertically. The Adjustable Coulter and Adjustable Tire allow vertical adjustment via the screw jack (picture 8).

Using the adjustable coulter or tire allows working height of the gang independently of the other tooling.

Note: Adjust gauge wheels or three-point lift so the parallel linkages on the gang are level at operating depth. If hard ground prevents the tool from fully engaging, install down-pressure spring kit. **Failure to give the gang proper up and down travel range can result in damage to coulters, wheels, tooling, and gang.**

On a gang with rigid coulter or fixed swivel coulter, all tooling heights are set to the coulter.

Scrapers are available to keep wet soil from sticking to coulters (picture 10).

See pictures 6-10.



Picture 6



Picture 7



Picture 8



Picture 9



Picture 10

Center Mounted Swivel Coultter

Non-adjustable swivel coultter mounts to the frame behind an adjustable tire. Does not include depth band.

See pictures 11-12.



Picture 11



Picture 12

BIGHAM BROTHERS, INC.

Tooling Bar Options

Two tooling bars are available for mounting tools like barring off discs or cultivator sweeps.

The Quick-Adjust tooling tube positions barring off discs with pin settings. No wrenches necessary for side-to-side or vertical disc adjustments.

The 4x4 tooling tube mounts standard shanks and clamps for discs or cultivator sweeps.

Each tube is held in place with a set screw on top of the gang tube (picture 13).

See pictures 13-14.



Picture 13



Picture 14

Rear Shanks

The cultivator gang mounts a chisel shank featuring Bigham Brothers' No-Twist™ foot piece. Note the rear mounting tube that may be adjusted vertically with four flange bolts. Start by moving the

The rigid shank mounts directly to the chisel shank mount tube at the rear of the gang. If you are mounting a 1x3" straight shank with a clamp, request the mounting tube, part number 689-244 without the chisel shank guides.

The Spring Reset Chisel Clamp attaches a chisel shank to the rear tooling tube through an automatic spring reset mechanism. Note the three spring mounting positions that give pressure settings of 400, 800, and 1200 pounds. See special mounting instructions on next page.

See pictures 15-18.



Picture 15



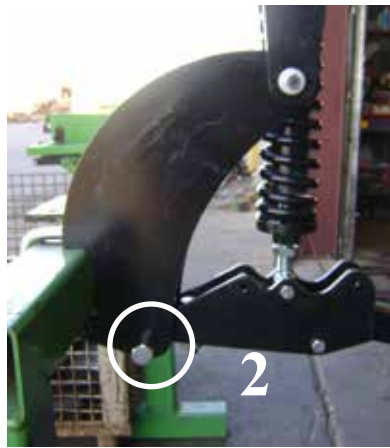
Picture 16



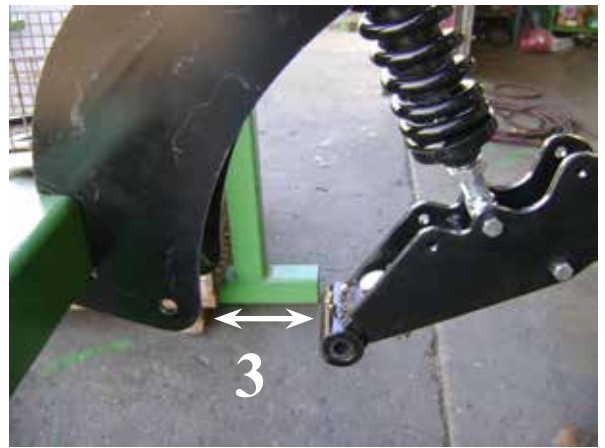
Picture 17



Picture 18



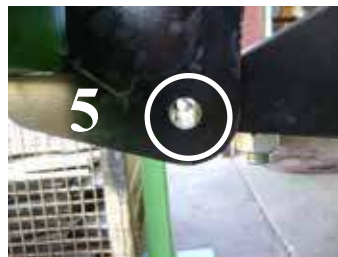
Picture 19



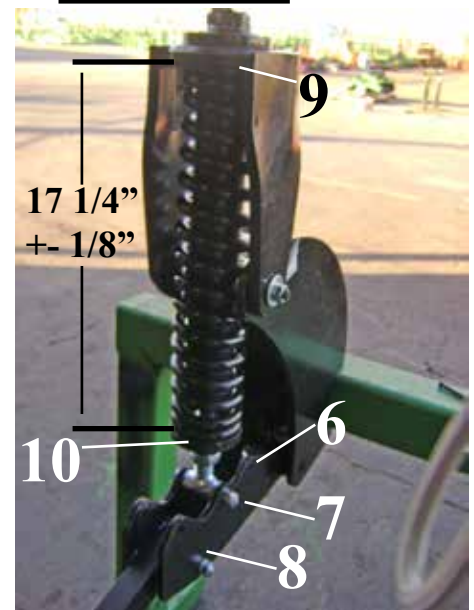
Picture 20



Picture 21



Picture 22



Picture 23

The Spring Loaded Chisel Clamp should be assembled when you receive it. However, you will need to partially disassemble it to mount it on the 4x4 tooling bar.

When assembled, the chisel shank clevis obscures the bottom end of the u-bolt (#1) which secures the clamp to the 4x4" bar. To install the nut, you must first remove the pivot bolt (#2). The nut will be left loose from the factory. You may need a hammer and punch to drive the bolt out and align the clevis when you are ready to reinsert the bolt.

When the bolt is removed, swing the clevis back out of the way (#3). Make sure the bushing does not fall out. Insert the u-bolt, and securely fasten the clamp to the 4x4" bar (#4). Realign the clevis. Use a tapered punch or other tool to align. **DO NOT ALIGN THE CLEVIS WITH YOUR FINGER.** Reinsert bolt and lock washer, then tighten to 150 foot-pounds.

⚠ Grease the clevis at the grease zerker (#1) and periodically thereafter.

Note that point pressure (trip pressure) is set by **positioning the spring assembly in the proper holes in the clevis**. The front holes (#6) set the pressure at 400 pounds. The center holes (#7) set pressure at 800 pounds. The rear holes (#8) set it at 1200 pounds.

The spring pressure is set at the factory with adjusting nuts on top and bottom. The distance between the inside of the top bracket (#9) and the bottom cap (#10) should be set at 17-1/4 inches plus or minus 1/8 inch. The spring pressure is set at the factory and **SHOULD NOT BE ADJUSTED IN THE FIELD**. Adjusting spring pressure will result in changing operating angles and tool alignment.

Warning! Position barring-off disc hubs as detailed below.

Barring-Off Disc Hubs Mounted on Cultivator Gangs

Description:

- (1.) Covering Disc Hubs **MUST** run in the correct direction or the spindle bolt will work loose, resulting in loss of disc and bearings. The spindle is fastened with either a left-handed or right-handed bolt. It **MUST** be installed on the proper side of the row to insure that the bolt stays tight during operation.
- (2.) Spindles are different on left- and right-handed hubs (left-handed bolt/right handed bolt).
- (3.) Spindles are made to run with **EITHER** a Link Belt/BBI Premium bearing **OR** a Fafnir (a few older models) bearing. They will not interchange.



Picture 20

Right-hand hub on LEFT side



Picture 21

Right hand bolt with red marking



Picture 22

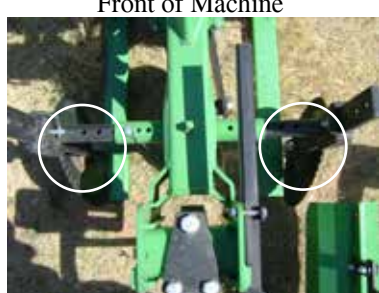
Left hand spindle detail

Identification of Left-Hand and Right-Hand hubs

Hubs are made left- or right-handed by the **Spindle Bolt**. Upper right shows marking on the hex spindle shaft. There are three markings:

- (A.) F/L: The spindle marked 'F' takes the Fafnir bearing only. The 'L' spindle will use either Link Belt or BBI Premium bearings. Order bearings accordingly.
- (B.) LH/RH Marks spindle as either Left-Hand or Right Hand. This refers to the **direction the spindle bolt tightens**. A left-hand spindle uses a left-hand thread spindle bolt. A right-hand spindle uses a right-hand thread spindle bolt. The right hand bolt may be marked with RED paint.
- (C.) Soil Flow Direction - The arrow points to the REAR of the machine.

Cultivator Field Installation Instructions:



Hub with Right Hand Bolt Hub with Left Hand Bolt

Picture 23

Locate the barring-off disc assemblies as shown in the photo at left. Note that the hub with the right-hand bolt is placed on the **left** side of the gang as seen from the rear. The right-hand bolt points right and the left-hand bolt points left as seen from the **rear** of the plow.

Note: If you reverse the direction of soil flow (ex. move soil toward row instead of away from row), move disc to the opposite side of the gang so the hub is facing the same direction in relation to the plow.

Attaching Tractor to Model 888 Cultivator

Choosing the proper tractor:

1. It is extremely important to utilize a tractor with sufficient horsepower and traction. Soil conditions and tooling (i.e. bedding tools vs. cultivator sweeps) will effect horsepower requirements, but allow 10-30 HP per row, i.e., 4 rows requires a 40-120 HP tractor.
2. The Model 888 Cultivator is equipped with rear-extending gangs. The three-point linkage of the tractor must allow 36 inches between the ground and the lower hitch points in the "fully raised" position to provide adequate transport clearance.
3. Ensure that both the right and left lift arms are identical in length, and the tool bar is level (right to left). They must be equal to achieve uniform operating depth and transport clearance.
4. Sway blocks or stabilizing chains should be adjusted to minimize lateral movement.
5. Insure tractor has sufficient front end weight to permit constant positive steering at all times.
6. Insure tire pressures are equal and set at manufacturer's recommended pressures.



CAUTION



**NEVER STAND BETWEEN TRACTOR
AND MODEL 888 CULTIVATOR WITH THE
TRACTOR ENGINE RUNNING.**

A. Tractors Equipped With Quick Hitches:

1. Attach quick hitch to the Model 888 Cultivator and make sure lower pin locks are secured.
2. Raise the parking stand into the clamp body or remove to allow the Model 888 Cultivator into a working position.
3. When disconnecting the Model 888 Cultivator adjust stands to leave the Tool Bar tilted slightly forward. This will permit easier disconnecting and reattaching.

⚠ WARNING: Never Work under the Model 888 Cultivator When it is in the raised position. Always lower the unit to the ground before making any adjustments.

Tractors Without Quick Hitch:

1. Attach lower lift arms of the tractor to the Model 888 Cultivator utilizing appropriate pins. Standard equipment for all units is a Category III wide hitch with 1-7/16" Lower and 1-1/4" Upper Pin diameters.
2. Attach top link after connecting lower lift arms. Raise parking stands into clamps or remove. When disconnecting, place stand to leave the Model 888 Cultivator in a stable position.



CAUTION



**DO NOT MOVE TRACTOR WITHOUT
MAKING SURE TOP HITCH IS
CONNECTED TO TRACTOR.**

Field Use and Adjustments



**NEVER ALLOW ANYONE TO
RIDE ON THIS EQUIPMENT
DURING OPERATION**



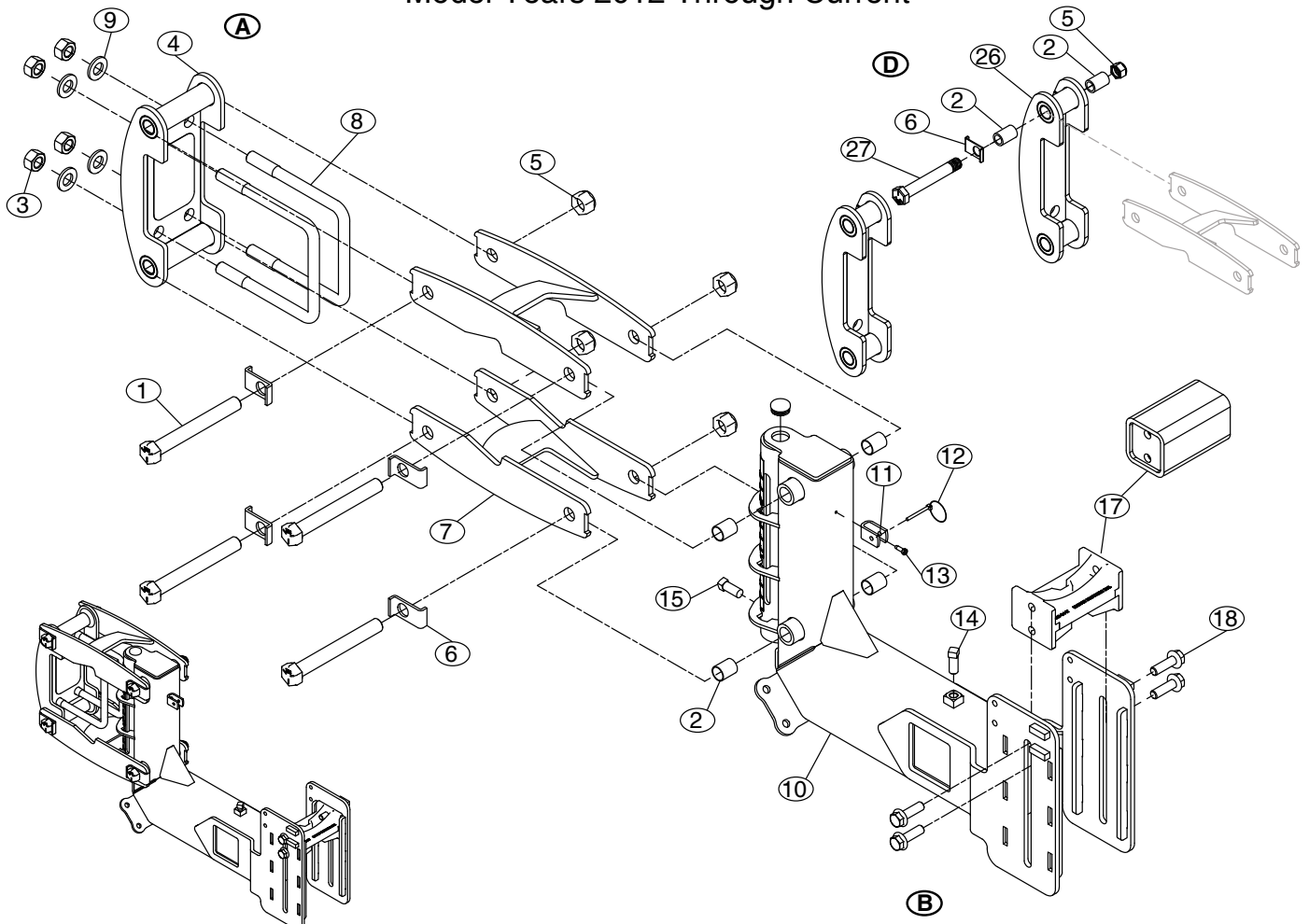
1. Maximum operating speed 4 - 8 mph. If obstructions are present, lower operating speed to a safe level. This will help minimize damage.
2. Adjust the depth by raising or lowering the depth control wheels.
3. **The frame must be horizontal (level) front to back when in use.** Adjust by lengthening or shortening the tractor's top link.
4. Check and adjust if necessary the coulter position in relation to the tillage shank working depth.
5. Never reverse the tractor when the Model 888 Cultivator is in the ground.
6. Do not make sharp turns when the Model 888 Cultivator is in the ground.
7. For best results make sure to operate on matching rows.

BIGHAM BROTHERS, INC.

Model 888 Cultivator

Parts Breakdown

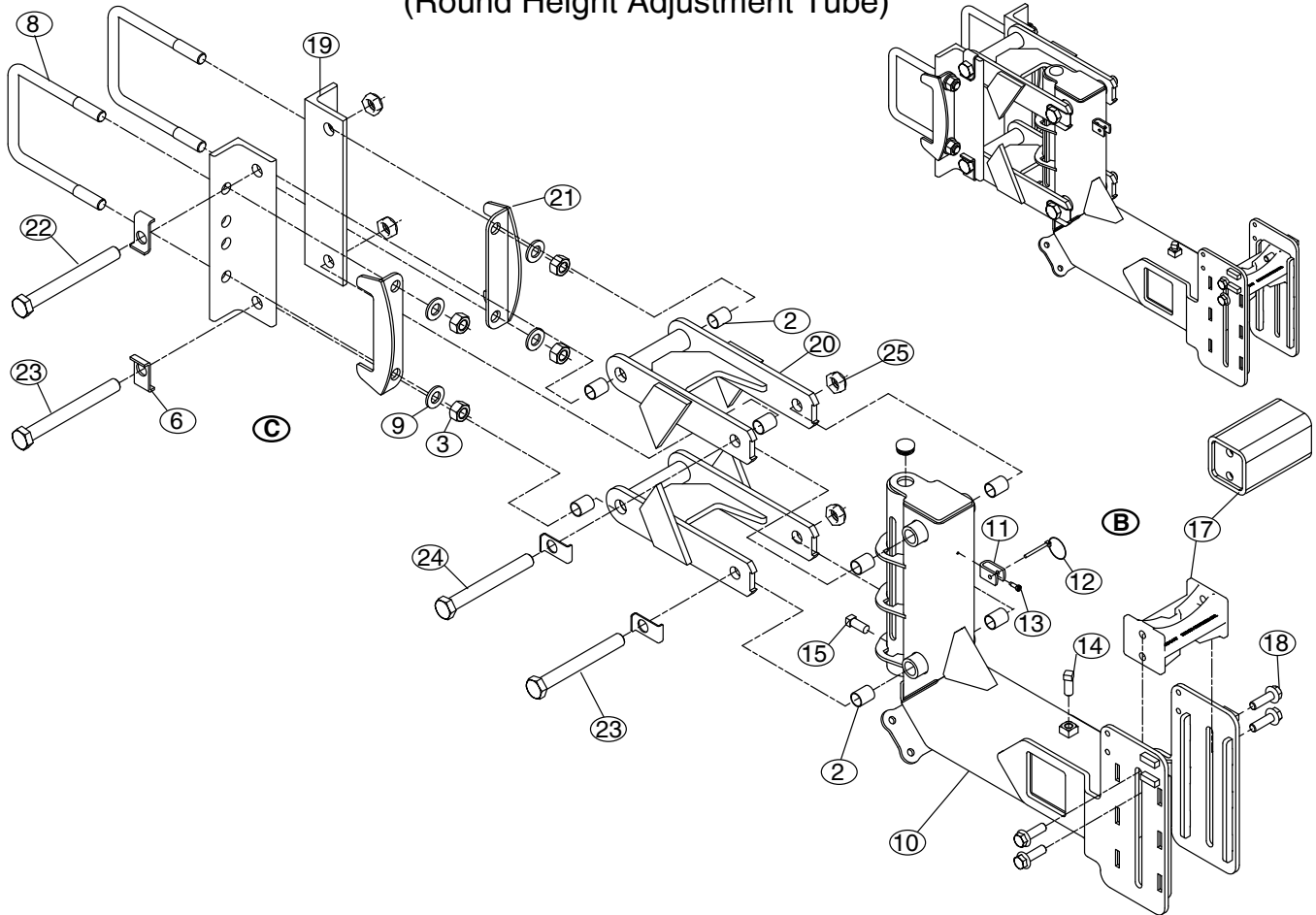
760-808, 760-809 Gang Bundle, (Wrap and Wrap-Split Clamps) Model 888 Cultivator
Model Years 2012 Through Current



Ref#	P/N	Description	Qty. Req. Per Assy. (* As Required)	Ref#	P/N	Description	Qty. Req. Per Assy. (* As Required)
A. Wrap Around Clamp				D. Split Wrap Around Clamp			
1.	602-1635Z	Bolt, Pivot 1"x8-1/4" (Gr 5) ZP	4	17.	689-244T	Clamp, Chisel Shank Mount 888	1
2.	624-110	Bushing, 1x1-1/8x1-1/2" (Plastic)	8		689-244	Tube, Tooling Mount 888 Cultivator (Optional no-guide mount for 1x3 shank)	
3.	611-1401Z	Nut, Hex ZP 7/8"	4	18.	603-1008Z	Bolt, Flange Head 5/8"x2" (Gr 5) ZP	4
4.	689-232S	Bracket, 7" Wrap Around	1	Note: Four 1x5" Bolts for front part of clamp, plus two 1x8-1/4" (item #1) for rear as in other clamps and a total of 6 nuts (item #5).			
5.	613-1603Z	Nut, Hex Nylock ZP 1" Striptill	4				
6.	689-208	Bolt Retainer, Striptill	4				
7.	689-234S	Linkage Arm, Wrap Striptill	2				
8.	610-0047	U-Bolt, 7/8" For 7"x7" (Gr 5) ZP	2				
9.	616-1403Z	Washer, Flat 7/8" S.A.E. Hard ZP	4				
10.	789-204	Tail Gang, 888 Cultivator	1				
B. 789-204 Tail Gang Assembly (Includes 11-16)							
11.	301-357	Clevis, Handle Retainer ZP	1				
12.	617-103	Klik Pin, 1/4 x 1-1/2"	1				
13.	605-0406Z	Screw, Hex Washer HD. 12-14X3/4" ZP	1				
14.	606-1010Z	Set Screw, Square Head 5/8"x2-1/2" ZP	1				
15.	606-1006Z	Set Screw, Square Head 5/8"x1-1/2" ZP	1				

BIGHAM BROTHERS, INC.

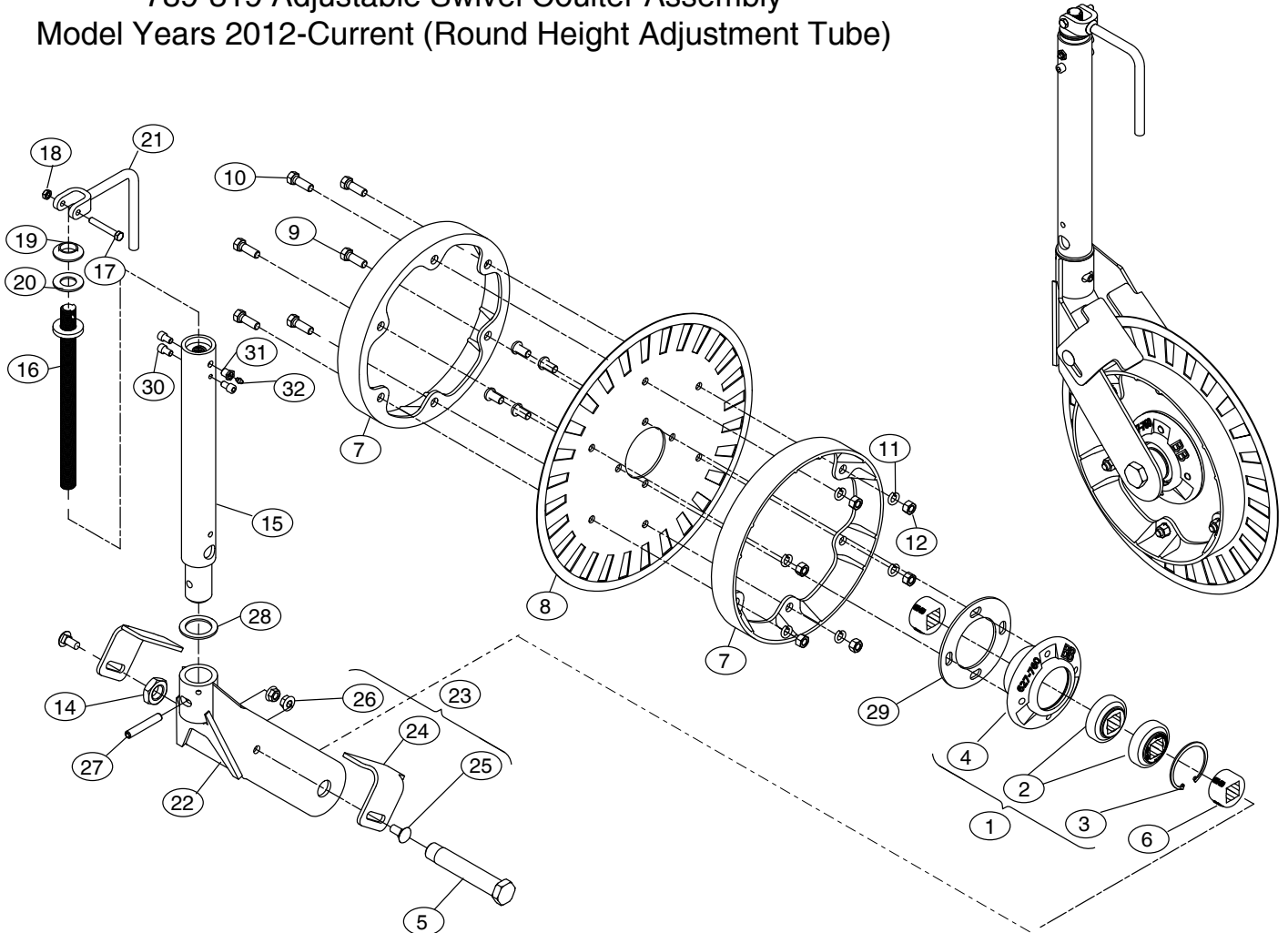
Model 888 Cultivator Parts Breakdown 760-807 Gang Bundle (Rear Mount), Model 888 Cultivator Model Years 2012 Through Current (Round Height Adjustment Tube)



Ref#	P/N	Description	Qty. Req. Per Assy. (* As Required)	Ref#	P/N	Description	Qty. Req. Per Assy. (* As Required)
2.	624-110	Bushing, 1x1-1/8x1-1/2" (Plastic)	8	C.		Rear Mount Clamp	
3.	611-1401Z	Nut, Hex ZP 7/8"	4	19.	689-200	Mount Angle, Universal	2
6.	689-208	Bolt Retainer, Striptill	4	20.	689-206	Linkage Arm	2
8.	610-0047	U-Bolt, 7/8" For 7"x7" (Gr 5) ZP	2	21.	686-992	Bracket, 7" Mount Support	2
9.	616-1403Z	Washer, Flat 7/8" (SAE L9 Hard) ZP	4	22.	602-1640Z	Bolt, HCS 1"x10" (Gr 5) ZP	1
10.	789-204	Tail Gang, 888 Cultivator	1	23.	602-1638Z	Bolt, HCS 1"x9-1/2" (Gr 5) ZP	2
B.	789-204	Tail Gang Assembly (Includes 11-16)		24.	602-1636Z	Bolt, HCS 1"x8-1/2" (Gr 5) ZP	1
11.	301-357	Clevis, Handle Retainer ZP	1	25.	614-1606Z	Nut, Hex Nylock Jam ZP 1"	4
12.	617-103	Klik Pin, 1/4 x 1-1/2"	1				
13.	605-0406Z	Screw, Hex Washer HD. 12-14X3/4" ZP	1				
14.	606-1010Z	Set Screw, Square Head 5/8"x2-1/2" ZP	1				
15.	606-1006Z	Set Screw, Square Head 5/8"x1-1/2" ZP	1				
17.	689-244T	Clamp, Chisel Shank Mount 888	1				
	689-244	Tube, Tooling Mount 888 Cultivator (Optional no-guide mount for 1x3 shank)					
18.	603-1008Z	Bolt, Flange Head 5/8"x2" (Gr 5) ZP	4				

BIGHAM BROTHERS, INC.

Model 888 Cultivator Parts Breakdown (Swivel Coulter Bundle with Depth Band) 789-319 Adjustable Swivel Coulter Assembly Model Years 2012-Current (Round Height Adjustment Tube)



Ref#	P/N	Description	Qty. Req. Per Assy. (* As Required)	Ref#	P/N	Description	Qty. Req. Per Assy. (* As Required)
1.	627-773	Hub/Brg. Assy., Coulter Strip Till	1	18.	613-0600Z	Nut, Hex Nylock ZP 3/8"	1
2.	622-057	Bearing, 1-1/8" Sq W208PP5	2	19.	624-112	Bushing, 1x1-1/4x9/16" W/HD	1
3.	627-010	Snap Ring, Disc Bedder Housing	1	20.	624-113	Washer, Nylon 2"ODx1"IDX.125"	1
4.	627-772	Hub, Coulter Strip-Till	1	21.	689-222	Latch, Coulter Crank	1
5.	610-0061	Axle, 1.209"X 6.25" Usbl.	1	22.	689-239R	Yoke Weldment, Pivot Coulter	1
6.	689-210	Spacer, Coulter Hub, Striptill	2	27.	617-062	Pin, Roll 1/2"x3" (ZP)	1
7.	660-141C	Depth Band, 2x14 for 20" Blade	2	28.	616-1990	Washer, 2-1/2"ODx1-3/4"IDX10GA.	1
8.	630-012	Blade, Fluted 20"x4.5mm 4 Hole	1	29.	689-272	Spacer, Coulter Hub 3/16"	1
9.	607-0804	Bolt, Flange(NF) 1/2x1-1/4" (3/4 HD)	4	30.	607-0603	Cap Screw, Socket 3/8"-16x1/2"	3
10.	601-0806Z	Bolt, HCS 1/2"x1-1/2" (Gr 2) ZP	6	31.	617-009	Fitting, Grease 1/4"-28 UNF	1
11.	615-0800Z	Washer, Lock ZP 1/2"	6	32.	617-006	Adapter, Striptill 1/4" Zerk	1
12.	611-0801Z	Nut, Hex ZP 1/2" (Gr 5)	6			Optional	
14.	614-1800M	Nut, Hex Nylock Jam 1-1/8"	1	23.	889-121	Scraper Kit, Adj. Coulter Striptill	-
15.	689-267	Stinger, Adjustable Swivel Coulter	1	24.	686-993	Scraper, Adj. Coulter Striptill	2
16.	689-212	Screw Jack Stud, 1"x14-3/8"	1	25.	604-0806Z	Bolt, Carriage 1/2"x1-1/2" (Gr 5) ZP	2
17.	602-0610Z	Bolt, HCS 3/8"x2-1/2" (Gr 5) ZP	1	26.	614-0801Z	Nut, Hex Serrated Flange 1/2"	2

(806) 745-0384

705 E. Slaton Rd.

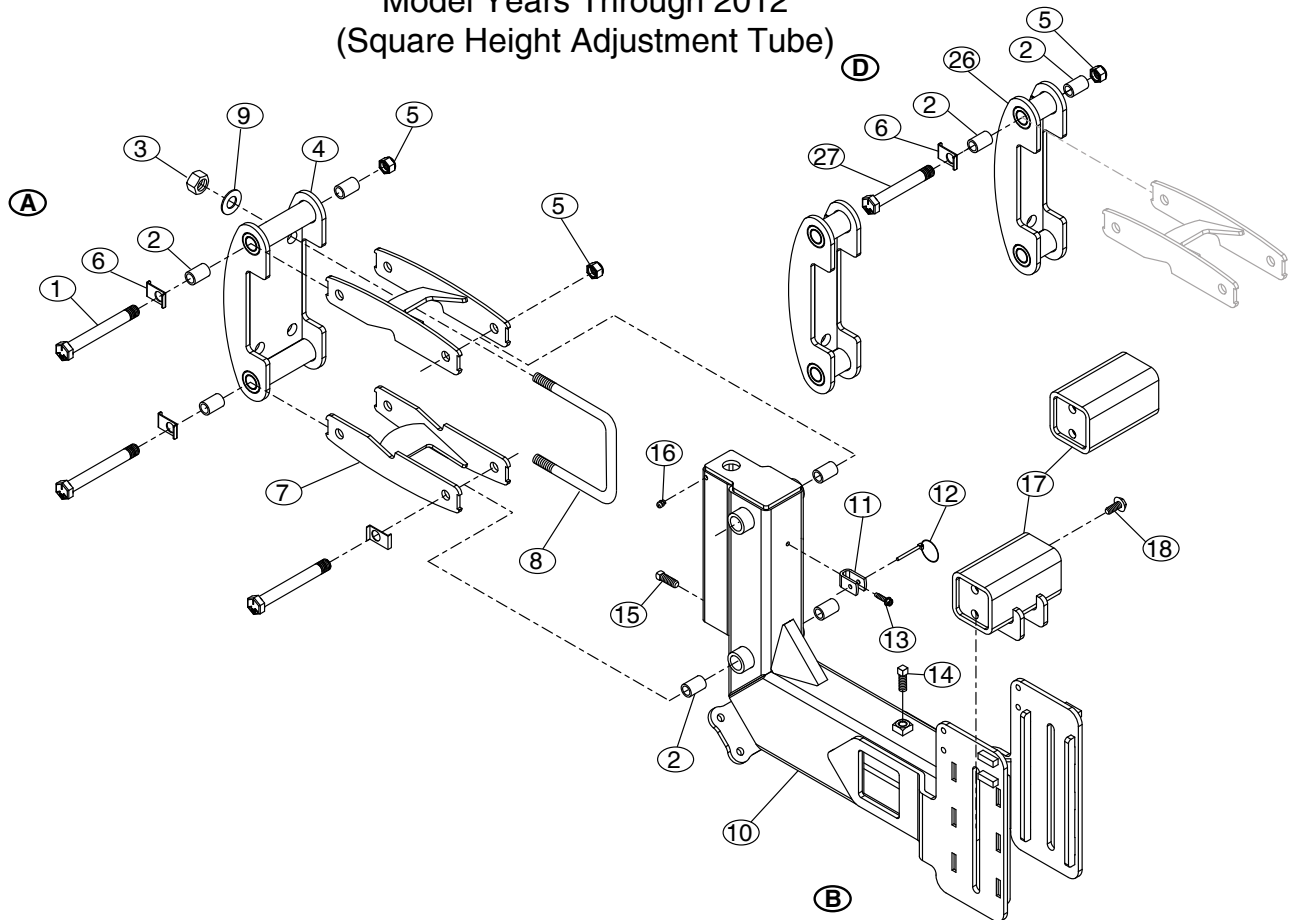
P.O. Box 3338

Lubbock, TX 79452

BIGHAM BROTHERS, INC.

Model 888 Cultivator Parts Breakdown

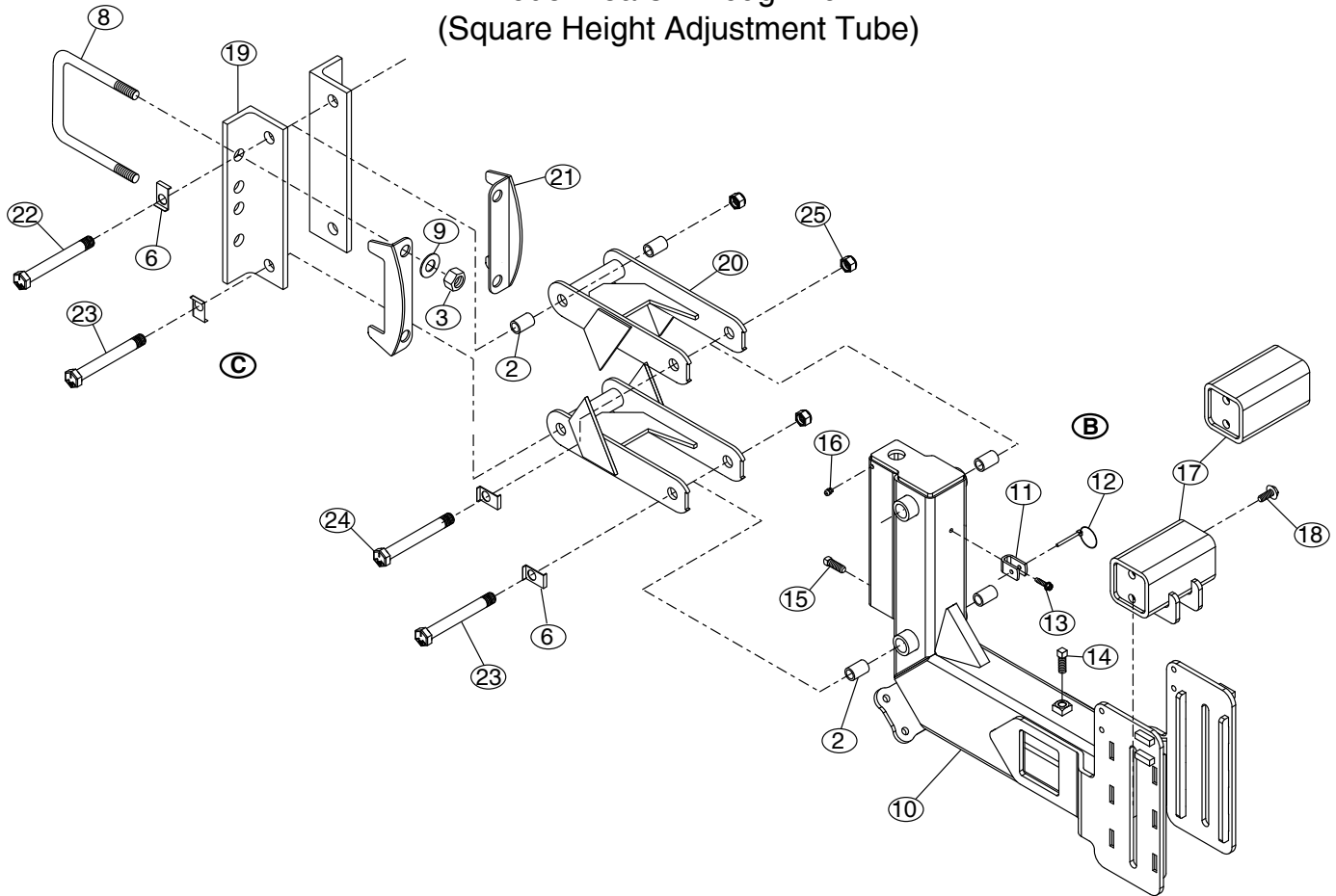
760-808, 760-809 Gang Bundle, (Wrap and Wrap-Split Clamps) Model 888 Cultivator
Model Years Through 2012
(Square Height Adjustment Tube)



Ref#	P/N	Description	Qty. Req. Per Assy. (* As Required)	Ref#	P/N	Description	Qty. Req. Per Assy. (* As Required)
A. Wrap Around Clamp				D. Split Wrap Around Clamp			
1.	602-1635Z	Bolt, Pivot 1"x8-1/4" (Gr 5) ZP	4	17.	689-244S	Tube, Chisel Shank Mount 888	1
2.	624-110	Bushing, 1x1-1/8x1-1/2" (Plastic)	8		689-244	Tube, Tooling Mount 888 Cultivator (Optional no-guide mount for 1x3 shank)	
3.	611-1401Z	Nut, Hex ZP 7/8"	4	18.	603-1008Z	Bolt, Flange Head 5/8"x2" (Gr 5) ZP	4
4.	689-232S	Bracket, 7" Wrap Around	1	Note: Four 1x5" Bolts for front part of clamp, plus two 1x8-1/4" (item #1) for rear as in other clamps and a total of 6 nuts (item #5).			
5.	613-1603Z	Nut, Hex Nylock ZP 1" Striptill	4				
6.	689-208	Bolt Retainer, Striptill	4	26.	689-233S	Bracket, 7" Split Wrap Around	2
7.	689-234S	Linkage Arm, Wrap Striptill	2	27.	602-1620Z	Bolt, HCS 1"x5" (Gr 5) ZP	4
8.	610-0047	U-Bolt, 7/8" For 7"x7" (Gr 5) ZP	2				
9.	616-1403Z	Washer, Flat 7/8" S.A.E. Hard ZP	4				
10.	789-204	Tail Gang, 888 Cultivator	1				
B. 789-204 Tail Gang Assembly (Includes 11-16)							
11.	301-357	Clevis, Handle Retainer ZP	1				
12.	617-103	Klik Pin, 1/4 x 1-1/2"	1				
13.	605-0406Z	Screw, Hex Washer HD. 12-14X3/4" ZP	1				
14.	606-1010Z	Set Screw, Square Head 5/8"x2-1/2" ZP	1				
15.	606-1006Z	Set Screw, Square Head 5/8"x1-1/2" ZP	1				
16.	617-008	Zerk, 1/8 NPT Threaded	1				

BIGHAM BROTHERS, INC.

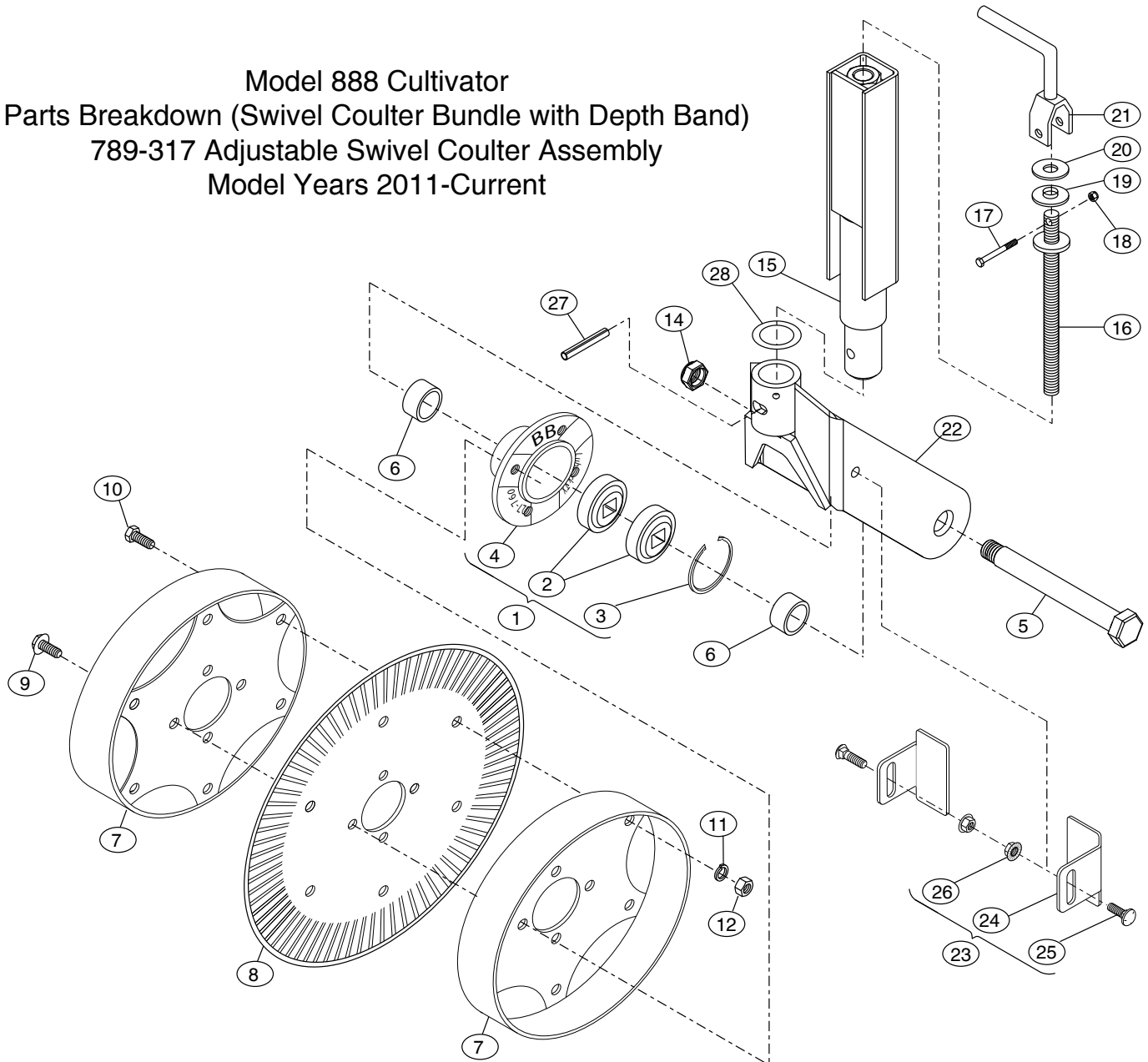
Model 888 Cultivator Parts Breakdown 760-807 Gang Bundle (Rear Mount), Model 888 Cultivator Model Years Through 2012 (Square Height Adjustment Tube)



Ref#	P/N	Description	Qty. Req. Per Assy. (* As Required)	Ref#	P/N	Description	Qty. Req. Per Assy. (* As Required)
2.	624-110	Bushing, 1x1-1/8x1-1/2" (Plastic)	8	C.		Rear Mount Clamp	
3.	611-1401Z	Nut, Hex ZP 7/8"	4	19.	689-200	Mount Angle, Universal	2
6.	689-208	Bolt Retainer, Striptill	4	20.	689-206	Linkage Arm	2
8.	610-0047	U-Bolt, 7/8" For 7"x7" (Gr 5) ZP	2	21.	686-992	Bracket, 7" Mount Support	2
9.	616-1403Z	Washer, Flat 7/8" (SAE L9 Hard) ZP	4	22.	602-1640Z	Bolt, HCS 1"x10" (Gr 5) ZP	1
10.	789-204	Tail Gang, 888 Cultivator	1	23.	602-1638Z	Bolt, HCS 1"x9-1/2" (Gr 5) ZP	2
B.	789-204	Tail Gang Assembly (Includes 11-16)		24.	602-1636Z	Bolt, HCS 1"x8-1/2" (Gr 5) ZP	1
11.	301-357	Clevis, Handle Retainer ZP	1	25.	614-1606Z	Nut, Hex Nylock Jam ZP 1"	4
12.	617-103	Klik Pin, 1/4 x 1-1/2"	1				
13.	605-0406Z	Screw, Hex Washer HD. 12-14X3/4" ZP	1				
14.	606-1010Z	Set Screw, Square Head 5/8"x2-1/2" ZP	1				
15.	606-1006Z	Set Screw, Square Head 5/8"x1-1/2" ZP	1				
16.	617-008	Zerk, 1/8 NPT Threaded	1				
17.	689-244S	Tube, Chisel Shank Mount 888					
	689-244	Tube, Tooling Mount 888 Cultivator (Optional no-guide mount for 1x3 shank)	1				
18.	603-1008Z	Bolt, Flange Head 5/8"x2" (Gr 5) ZP	4				

BIGHAM BROTHERS, INC.

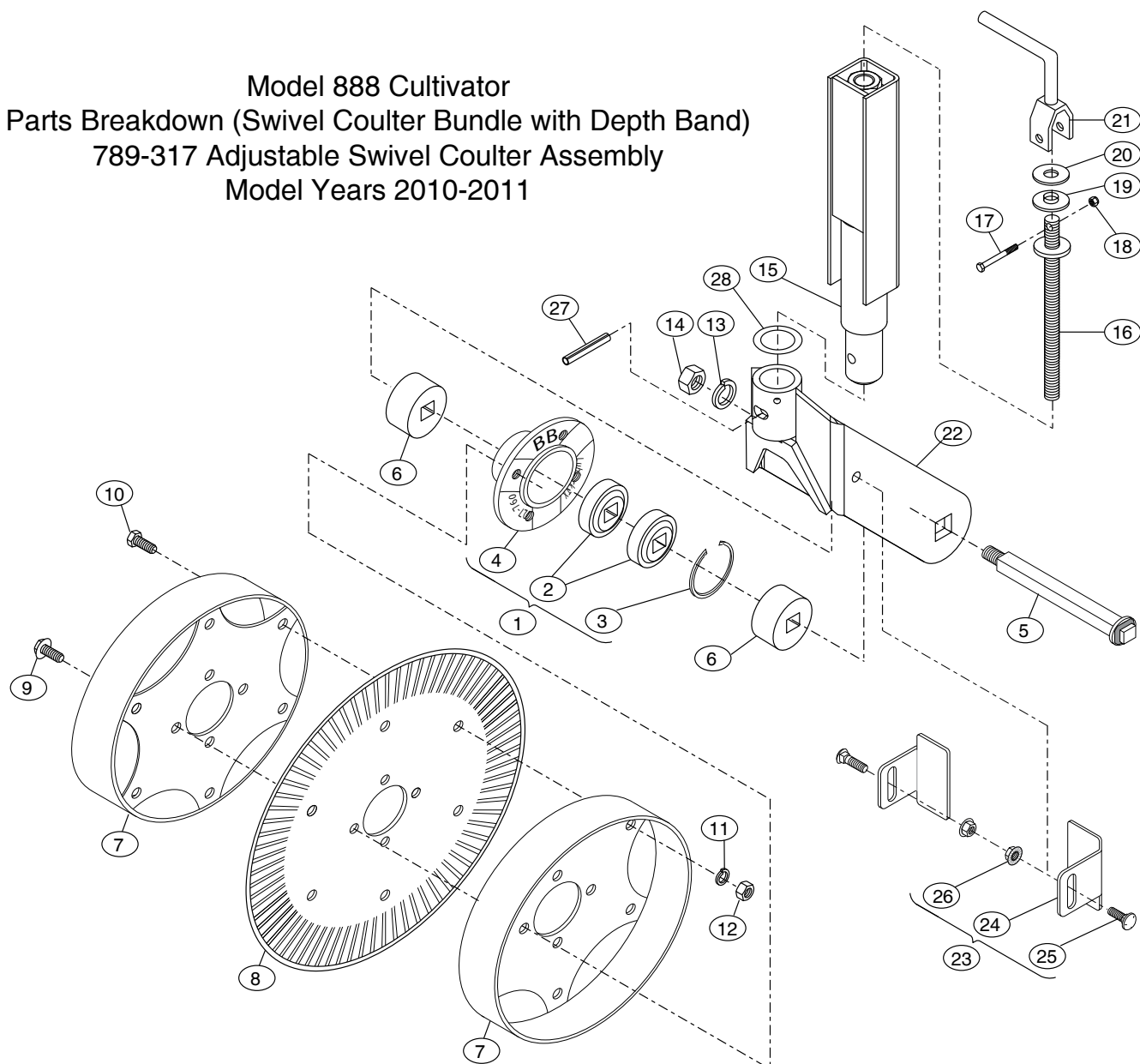
Model 888 Cultivator Parts Breakdown (Swivel Coulter Bundle with Depth Band) 789-317 Adjustable Swivel Coulter Assembly Model Years 2011-Current



Ref#	P/N	Description	Qty. Req. Per Assy. (* As Required)	Ref#	P/N	Description	Qty. Req. Per Assy. (* As Required)
1.	627-773	Hub/Brg. Assy., Coulter Strip Till	1	17.	602-0610Z	Bolt, HCS 3/8"x2-1/2" (Gr 5) ZP	1
2.	622-057	Bearing, 1-1/8" Sq W208PP5	2	18.	613-0600Z	Nut, Hex Nylock ZP 3/8"	1
3.	627-010	Snap Ring, Disc Bedder Housing	1	19.	624-112	Bushing, 1x1-1/4x9/16" W/HD	1
4.	627-772	Hub, Coulter Strip-Till	1	20.	624-113	Washer, Nylon 2"ODx1"IDx.125"	1
5.	610-0061	Axle, 1.209"X 6.25" Usbl.	1	21.	689-222	Latch, Coulter Crank	1
6.	689-210N	Spacer, Coulter Hub, Striptill	2	22.	689-239R	Yoke Weldment, Pivot Coulter	1
7.	660-141	Depth Band, 2x14 for 20" Blade	2	27.	617-062	Pin,Roll 1/2"x3" (ZP)	1
8.	630-012	Blade, Fluted 20"x4.5mm 4 Hole	1	28.	616-1990	Washer, 2-1/2"ODx1-3/4"IDx10GA.	1
9.	607-0805	Bolt, Flange(NF) 1/2x1-1/4" (3/4 HD)	4				
10.	601-0806Z	Bolt, HCS 1/2"x1-1/2" (Gr 2) ZP	6		Optional		
11.	615-0800Z	Washer, Lock ZP 1/2"	6	23.	889-121	Scraper Kit, Adj. Coulter Striptill	-
12.	611-0801Z	Nut, Hex ZP 1/2" (Gr 5)	6	24.	686-993	Scraper, Adj. Coulter Striptill	2
14.	614-1800M	Nut, Hex Nylock Jam 1-1/8"	1	25.	604-0806Z	Bolt, Carriage 1/2"x1-1/2" (Gr 5) ZP	2
15.	689-246	Stinger, Adjustable Swivel Coulter	1	26.	614-0801Z	Nut, Hex Serrated Flange 1/2"	2
16.	689-212	Screw Jack Stud, 1"x14-3/8"	1				

BIGHAM BROTHERS, INC.

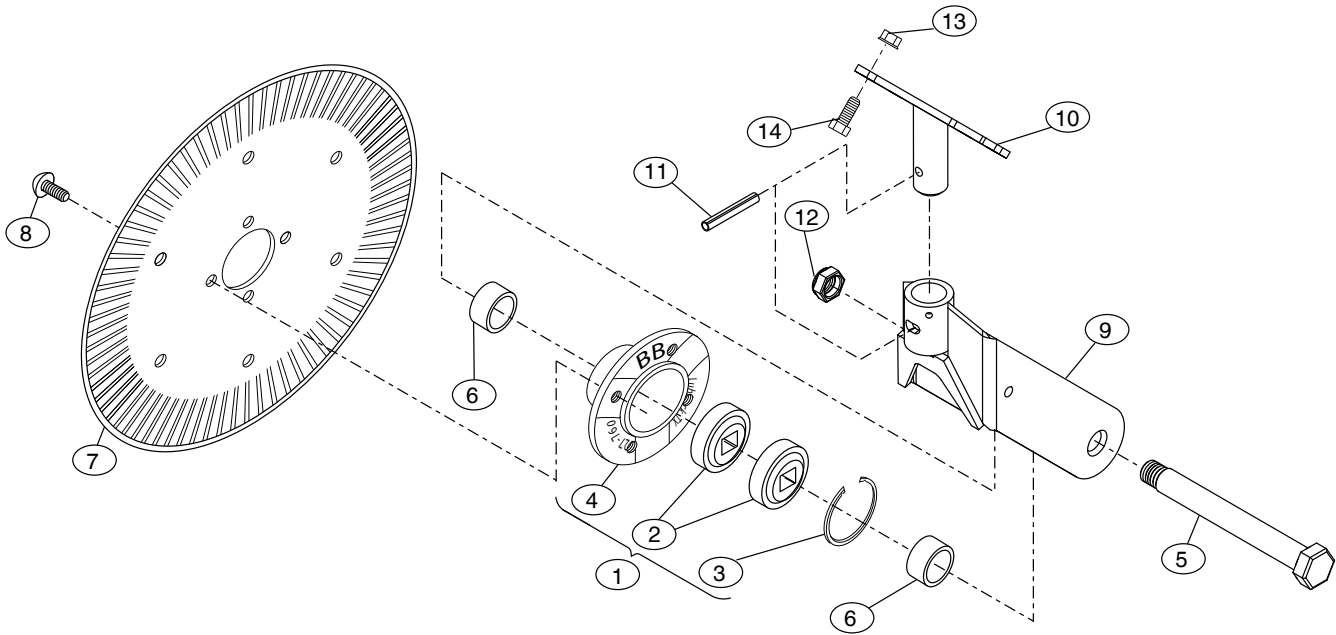
Model 888 Cultivator Parts Breakdown (Swivel Coulter Bundle with Depth Band) 789-317 Adjustable Swivel Coulter Assembly Model Years 2010-2011



Ref#	P/N	Description	Qty. Req. Per Assy. (* As Required)	Ref#	P/N	Description	Qty. Req. Per Assy. (* As Required)
1.	627-773	Hub/Brg. Assy., Coulter Strip Till	1	16.	689-212	Screw Jack Stud, 1"x14-3/8"	1
2.	622-057	Bearing, 1-1/8" Sq W208PP5	2	17.	602-0610Z	Bolt, HCS 3/8"x2-1/2" (Gr 5) ZP	1
3.	627-010	Snap Ring, Disc Bedder Housing	1	18.	613-0600Z	Nut, Hex Nylock ZP 3/8"	1
4.	627-772	Hub, Coulter Strip-Till	1	19.	624-112	Bushing, 1x1-1/4x9/16" W/HD	1
5.	610-0053	Gang Bolt, 1-1/8"x7-3/8" USBL	1	20.	624-113	Washer, Nylon 2"ODx1"IDx.125"	1
6.	689-210	Spacer, Coulter Hub, Striptill	2	21.	689-222	Latch, Coulter Crank	1
7.	660-141	Depth Band, 2x14 for 20" Blade	2	22.	689-239	Yoke Weldment, Pivot Coulter	1
8.	630-012	Blade, Fluted 20"x4.5mm 4 Hole	1	27.	617-062	Pin, Roll 1/2"x3" (ZP)	1
9.	607-0805	Bolt, Flange(NF) 1/2x1-1/4" (3/4 HD)	4	28.	616-1990	Washer, 2-1/2"ODx1-3/4"IDx10GA.	1
10.	601-0806Z	Bolt, HCS 1/2"x1-1/2" (Gr 2) ZP	6				
11.	615-0800Z	Washer, Lock ZP 1/2"	6		Optional		
12.	611-0801Z	Nut, Hex ZP 1/2" (Gr 5)	6	23.	889-121	Scraper Kit, Adj. Coulter Striptill	-
13.	615-1800	Washer, Lock 1-1/8" (Plain)	1	24.	686-993	Scraper, Adj. Coulter Striptill	2
14.	611-1801Z	Nut, Hex ZP 1-1/8"	1	25.	604-0806Z	Bolt, Carriage 1/2"x1-1/2" (Gr 5) ZP	2
15.	689-246	Stinger, Adjustable Swivel Coulter	1	26.	614-0801Z	Nut, Hex Serrated Flange 1/2"	2

BIGHAM BROTHERS, INC.

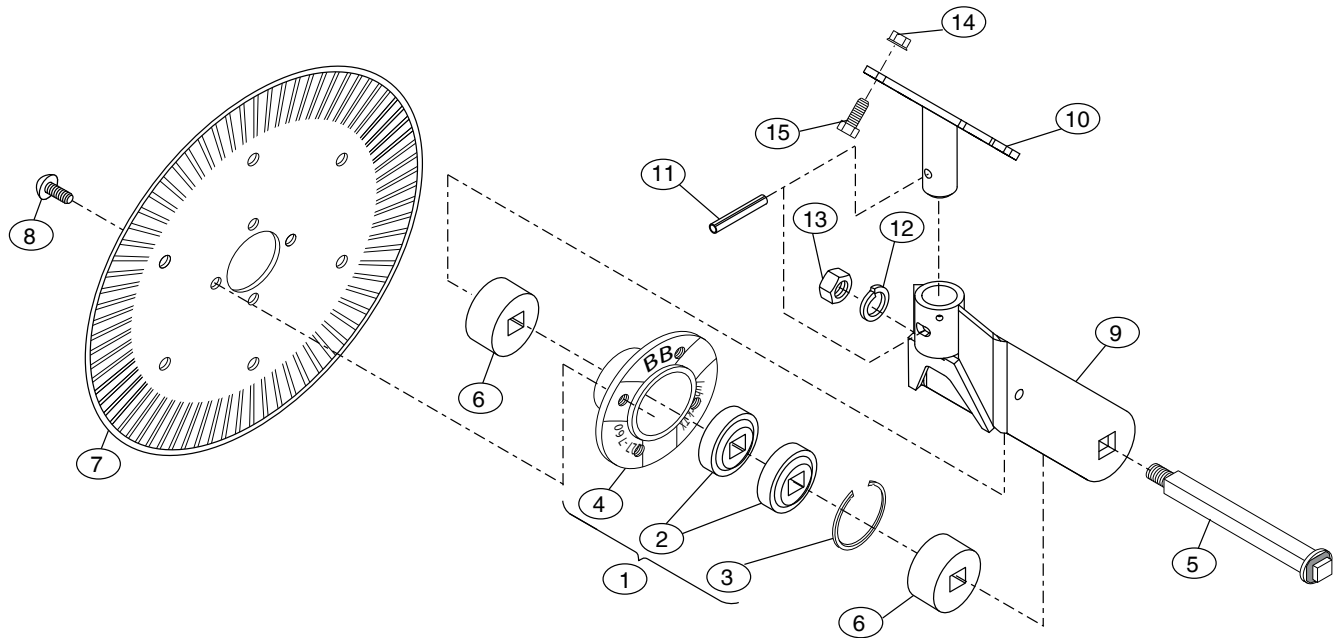
Model 888 Cultivator Parts Breakdown 789-315 Swivel Coulter Assembly Model Years 2011-Current



Ref#	P/N	Description	Qty. Req. Per Assy. (* As Required)	Ref#	P/N	Description	Qty. Req. Per Assy. (* As Required)
1.	627-773	Hub/Brg. Assy., Coulter	1				
2.	622-057	Bearing, 1-1/8" Sq W208PP5	2				
3.	627-010	Snap Ring, Disc Bedder Housing	1				
4.	627-772	Hub, Coulter Strip-Till	1				
5.	610-0061	Axle, 1.209"X 6.25" Usbl.	1				
6.	689-210N	Spacer, Coulter Hub, Striptill	2				
7.	630-012	Blade, Fluted 20"x4.5mm 4 Hole	1				
8.	607-0804Z	Button Head SS 1/2"-20 x 1" ZP	4				
9.	689-239	Yoke Weldment, Pivot Coulter	1				
10.	689-221	Bracket, Pivot Coulter Cultivator	1				
11.	617-062	Pin, Roll 1/2"x3" (ZP)	1				
12.	614-1800M	Nut, Hex Nylock Jam 1-1/8"	1				
13.	614-0801Z	Nut, Hex Serrated Flange 1/2"	4				
14.	602-0806Z	Bolt, HCS 1/2"x1-1/2" (Gr 5) ZP	4				

BIGHAM BROTHERS, INC.

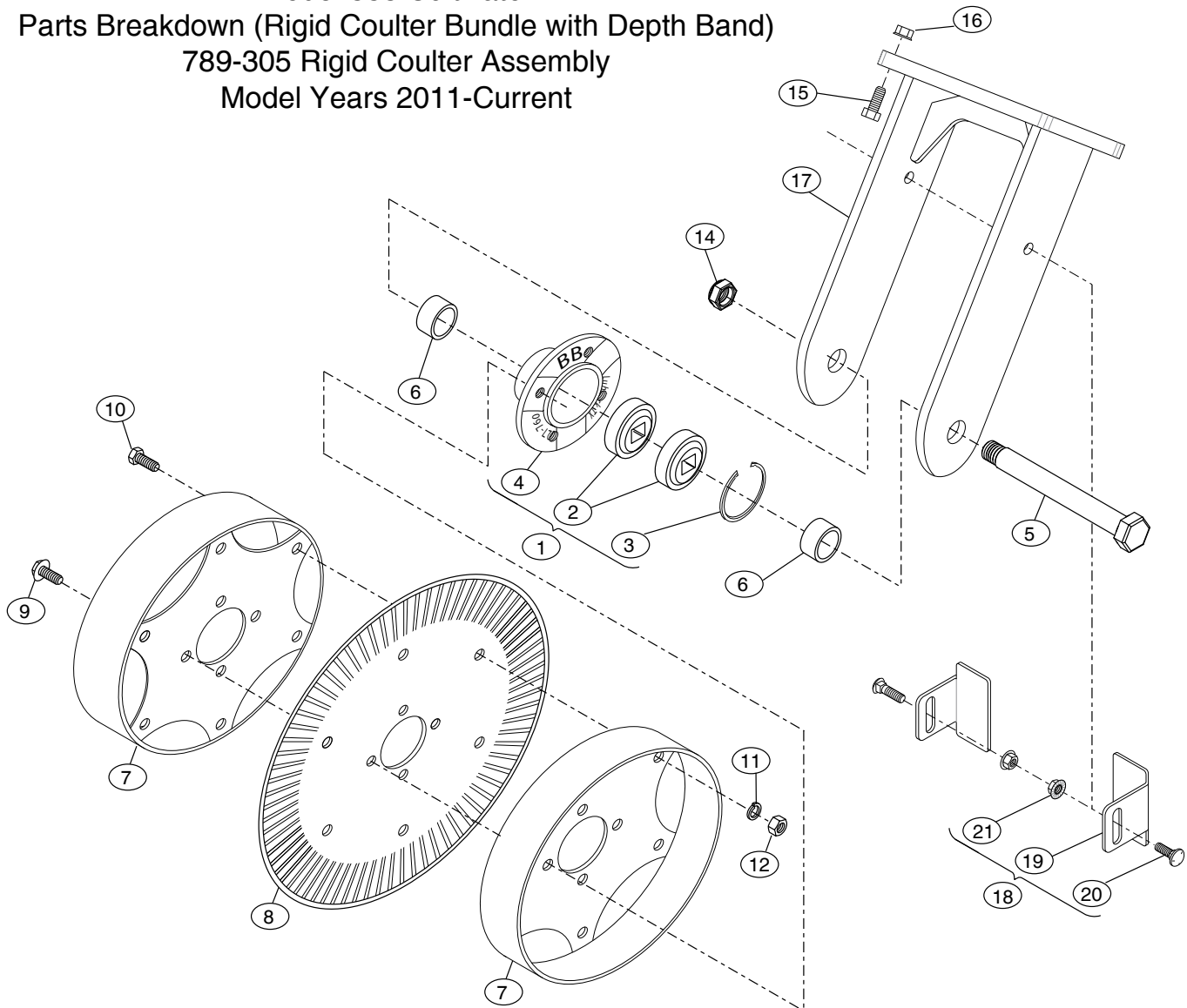
Model 888 Cultivator Parts Breakdown 789-315 Swivel Coulters Assembly Model Years 2010-2011



Ref#	P/N	Description	Qty. Req. Per Assy. (* As Required)	Ref#	P/N	Description	Qty. Req. Per Assy. (* As Required)
1.	627-773	Hub/Brg. Assy., Coulters	1				
2.	622-057	Bearing, 1-1/8" Sq W208PP5	2				
3.	627-010	Snap Ring, Disc Bedder Housing	1				
4.	627-772	Hub, Coulters Strip-Till	1				
5.	610-0053	Gang Bolt, 1-1/8"x7-3/8" USBL	1				
6.	689-210	Spacer, Coulters Hub, Striptill	2				
7.	630-012	Blade, Fluted 20"x4.5mm 4 Hole	1				
8.	607-0804Z	Button Head SS 1/2"-20 x 1" ZP	4				
9.	689-239	Yoke Weldment, Pivot Coulters	1				
10.	689-221	Bracket, Pivot Coulters Cultivator	1				
11.	617-062	Pin, Roll 1/2"x3" (ZP)	1				
12.	615-1800	Washer, Lock 1-1/8" (Plain)	1				
13.	611-1801Z	Nut, Hex ZP 1-1/8"	1				
14.	614-0801Z	Nut, Hex Serrated Flange 1/2"	4				
15.	602-0806Z	Bolt, HCS 1/2"x1-1/2" (Gr 5) ZP	4				

BIGHAM BROTHERS, INC.

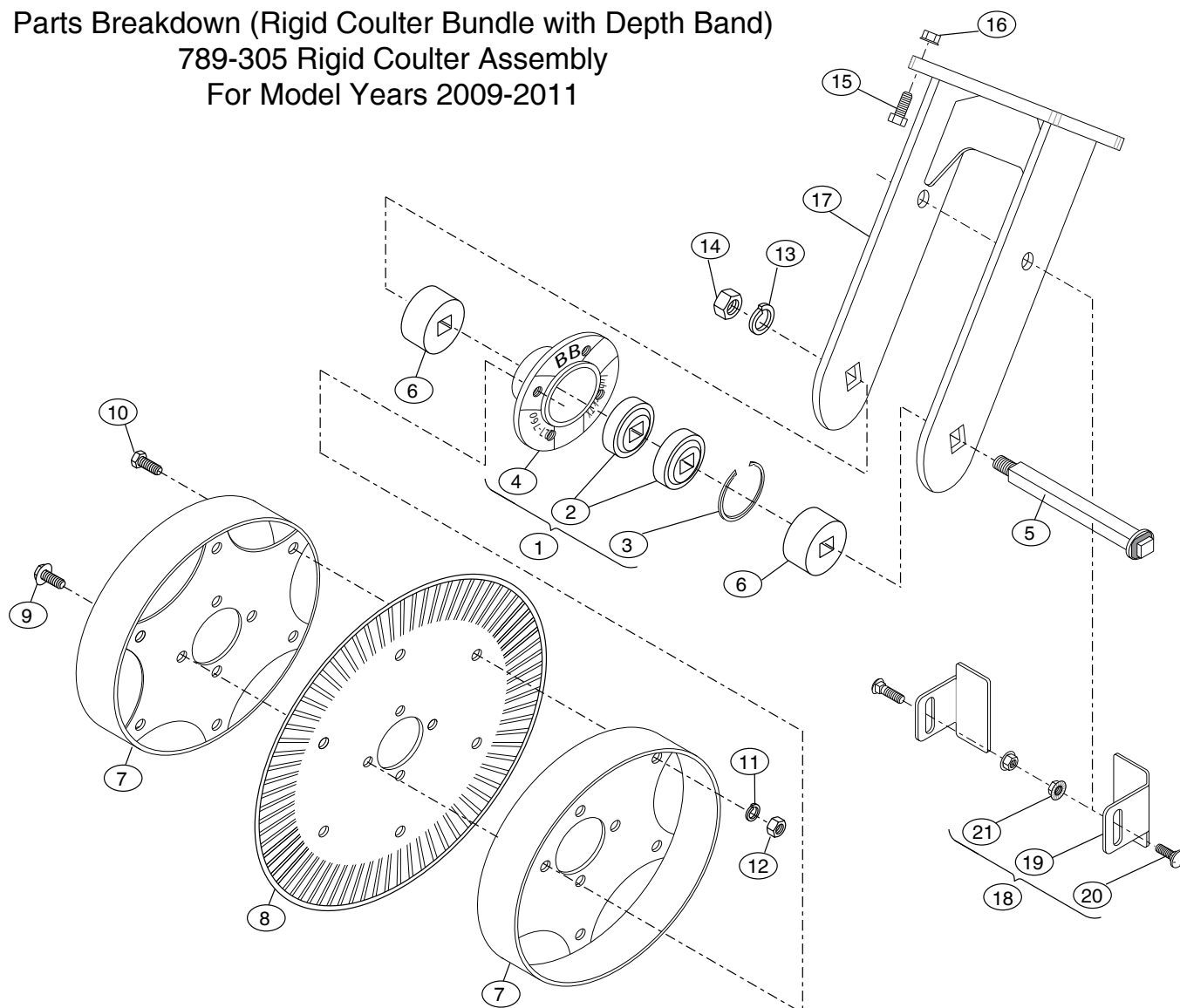
Model 888 Cultivator Parts Breakdown (Rigid Coulter Bundle with Depth Band) 789-305 Rigid Coulter Assembly Model Years 2011-Current



Ref#	P/N	Description	Qty. Req. Per Assy. (* As Required)	Ref#	P/N	Description	Qty. Req. Per Assy. (* As Required)
1.	627-773	Hub/Brg. Assy., Coulter Strip Till	1	15.	602-0806Z	Bolt, HCS 1/2"x1-1/2" (Gr 5) ZP	4
2.	622-057	Bearing, 1-1/8" Sq W208PP5	2	16.	614-0801Z	Nut, Hex Serrated Flange 1/2"	4
3.	627-010	Snap Ring, Disc Bedder Housing	1	17.	689-207R	Bracket, Rigid Coulter Striptill (New Style April 2011)	1
4.	627-772	Hub, Coulter Strip-Till	1		Optional		
5.	610-0061	Axle, 1.209"X 6.25" Usbl.	1	18.	889-121	Scraper Kit, Adj. Coulter Striptill	-
6.	689-210N	Spacer, Coulter Hub, Striptill	2	19.	686-993	Scraper, Adj. Coulter Striptill	2
7.	660-141	Depth Band, 2x14 for 20" Blade	2	20.	604-0806Z	Bolt, Carriage 1/2"x1-1/2" (Gr 5) ZP	2
8.	630-012	Blade, Fluted 20"x4.5mm 4 Hole	1	21.	614-0801Z	Nut, Hex Serrated Flange 1/2"	2
9.	607-0805	Bolt, Flange(NF) 1/2x1-1/4" (3/4 HD)	4				
10.	601-0806Z	Bolt, HCS 1/2"x1-1/2" (Gr 2) ZP	6				
11.	615-0800Z	Washer, Lock ZP 1/2"	6				
12.	611-0801Z	Nut, Hex ZP 1/2" (Gr 5)	6				
14.	614-1800M	Nut, Hex Nylock Jam 1-1/8"	1				

BIGHAM BROTHERS, INC.

Model 888 Cultivator Parts Breakdown (Rigid Coulter Bundle with Depth Band) 789-305 Rigid Coulter Assembly For Model Years 2009-2011



Ref#	P/N	Description	Qty. Req. Per Assy. (* As Required)	Ref#	P/N	Description	Qty. Req. Per Assy. (* As Required)
1.	627-773	Hub/Brg. Assy., Coulter Strip Till	1	16.	614-0801Z	Nut, Hex Serrated Flange 1/2"	4
2.	622-057	Bearing, 1-1/8" Sq W208PP5	2	17.	689-207	Bracket, Rigid Coulter Striptill	1
3.	627-010	Snap Ring, Disc Bedder Housing	1			Optional	
4.	627-772	Hub, Coulter Strip-Till	1	18.	889-121	Scraper Kit, Adj. Coulter Striptill	-
5.	610-0053	Gang Bolt, 1-1/8"x7-3/8" USBL	1	19.	686-993	Scraper, Adj. Coulter Striptill	2
6.	689-210	Spacer, Coulter Hub, Striptill	2	20.	604-0806Z	Bolt, Carriage 1/2"x1-1/2" (Gr 5) ZP	2
7.	660-141	Depth Band, 2x14 for 20" Blade	2	21.	614-0801Z	Nut, Hex Serrated Flange 1/2"	2
8.	630-012	Blade, Fluted 20"x4.5mm 4 Hole	1				
9.	607-0805	Bolt, Flange(NF) 1/2x1-1/4" (3/4 HD)	4				
10.	601-0806Z	Bolt, HCS 1/2"x1-1/2" (Gr 2) ZP	6				
11.	615-0800Z	Washer, Lock ZP 1/2"	6				
12.	611-0801Z	Nut, Hex ZP 1/2" (Gr 5)	6				
13.	615-1800	Washer, Lock 1-1/8" (Plain)	1				
14.	611-1801Z	Nut, Hex ZP 1-1/8"	1				
15.	602-0806Z	Bolt, HCS 1/2"x1-1/2" (Gr 5) ZP	4				

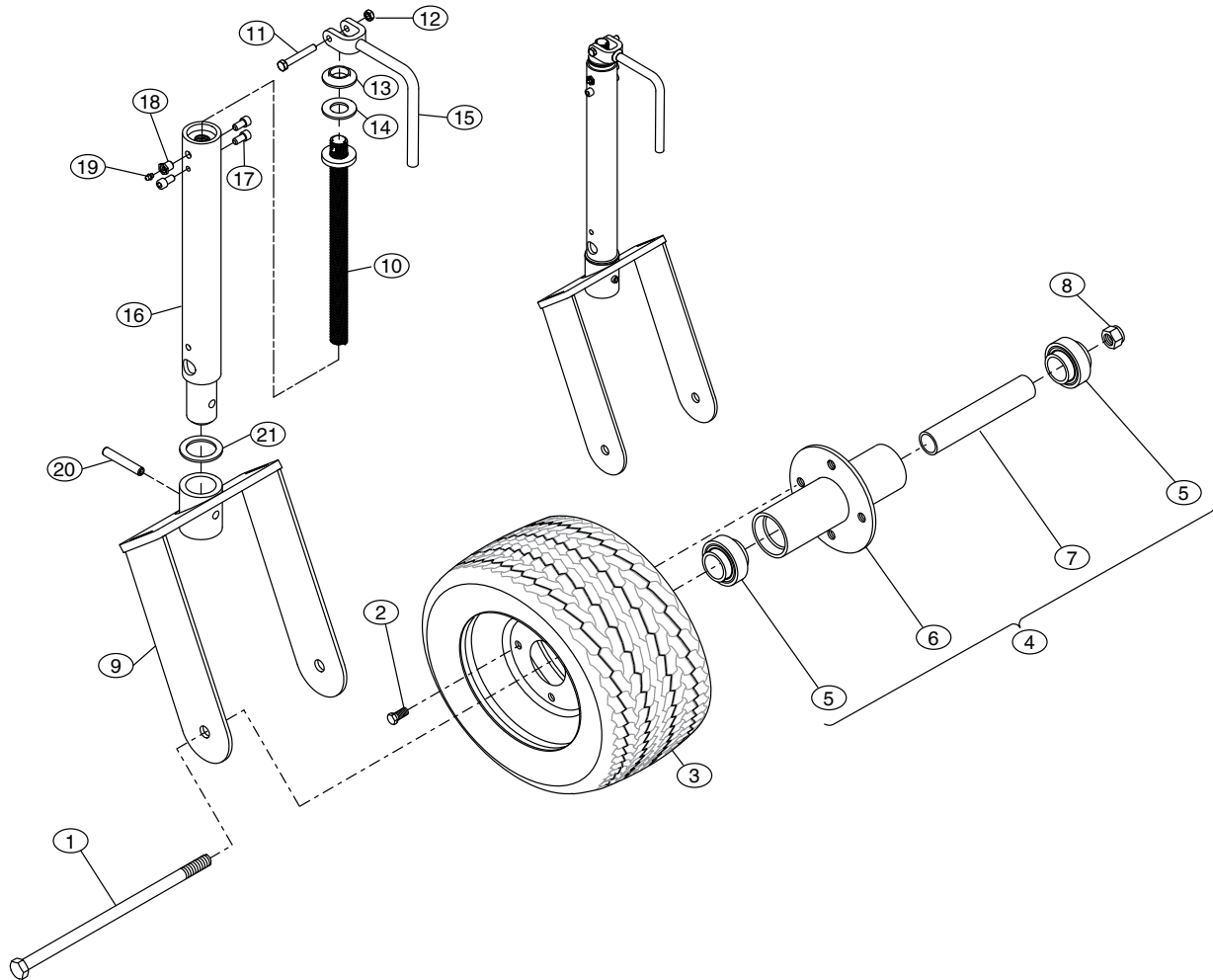
BIGHAM BROTHERS, INC.

Model 888 Cultivator

Parts Breakdown

760-817/ 760-817F Wheel/Tire Bundle 18x8.5x8 8 Ply

Model Years 2012-Current (Round Height Adjustment Tube)



Ref#	P/N	Description	Qty. Req. Per Assy. (* As Required)	Ref#	P/N	Description	Qty. Req. Per Assy. (* As Required)
1.	602-1244Z	Bolt, HCS 3/4"x11" (Gr 5) ZP	1	16.	689-267	Stinger, Adjustable Swivel Coulter	1
2.	607-0805P	Bolt, Lug 1/2x1-1/4 (13/16 HD)	4	17.	607-0603	Cap Screw, Socket 3/8"-16x1/2"	3
3.	705-008T	Wheel & Tire, 4 Hole 18x8.5x8.0"	1	18.	617-009	Fitting, Grease 1/4"-28 UNF	1
	705-008F	Wheel&Tire, 4Hole 18X8.5X8"Foam Filled -	-	19.	617-006	Adapter, Striptill 1/4" Zerk	1
4.	627-771	Hub/Bearing, 4 Hole	1	20.	617-062	Pin,Roll 1/2"x3" (ZP)	1
5.	L2050144	Bearing	2	21.	616-1990	Washer, 2-1/2"ODx1-3/4"IDx10GA.	1
6.	627-764	Hub, 4 Hole	1				
7.	636-882	Spacer, Bearing 4-Hole Hub	1				
8.	613-1215J	Nut, Hex Nylock Jam ZP 3/4"	1				
9.	689-261	Bracket, Tire Mount 886 Cultivator	1				
10.	689-212	Screw Jack Stud, 1"x14-3/8"	1				
11.	602-0608Z	Bolt, HCS 3/8"x2" (Gr 5) ZP	1				
12.	613-0600Z	Nut, Hex Nylock ZP 3/8"	1				
13.	624-112	Bushing, 1x1-1/4x9/16" W/HD	1				
14.	624-113	Washer, Nylon 2"ODx1"IDx.125"	1				
15.	689-222	Latch, Coulter Crank	1				

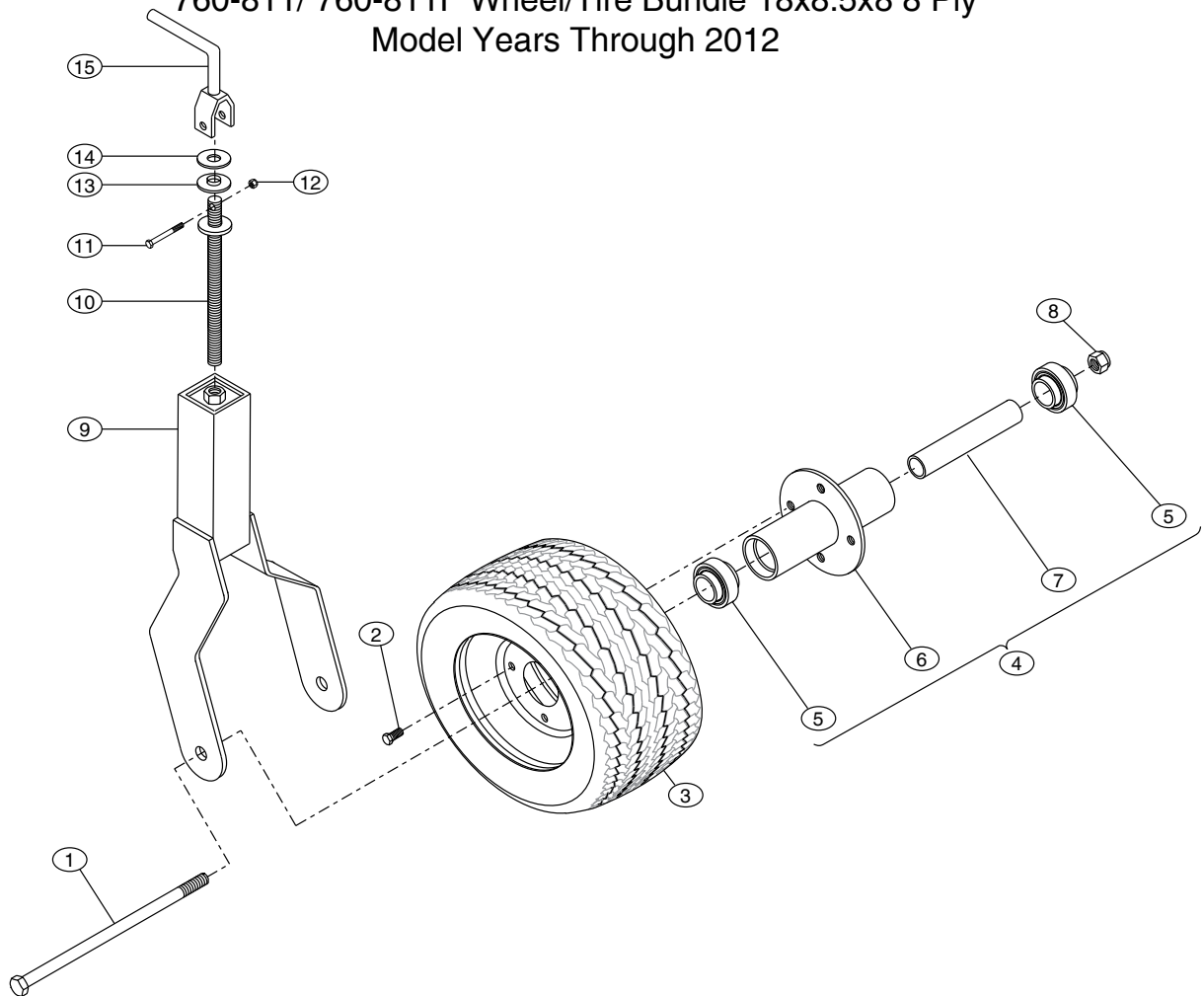
BIGHAM BROTHERS, INC.

Model 888 Cultivator

Parts Breakdown

760-811/ 760-811F Wheel/Tire Bundle 18x8.5x8 8 Ply

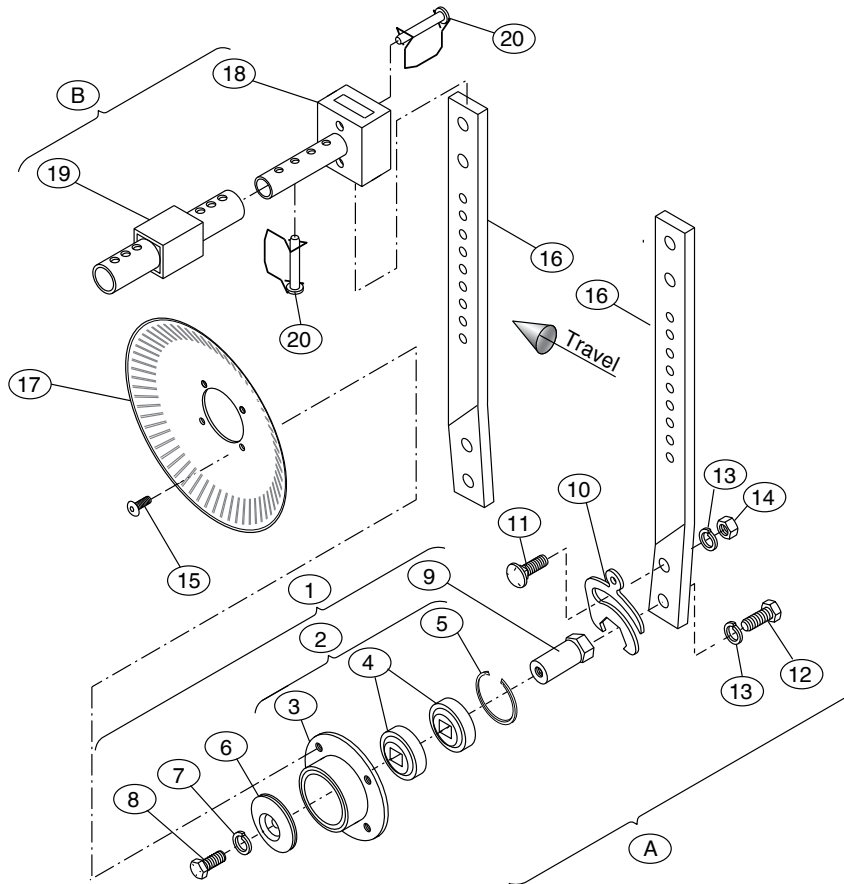
Model Years Through 2012



Ref#	P/N	Description	Qty. Req. Per Assy. (* As Required)	Ref#	P/N	Description	Qty. Req. Per Assy. (* As Required)
1.	602-1244Z	Bolt, HCS 3/4"x11" (Gr 5) ZP	1				
2.	607-0805P	Bolt, Lug 1/2x1-1/4 (13/16 HD)	4				
3.	705-008T	Wheel & Tire, 4 Hole 18x8.5x8.0"	1				
	705-008F	Wheel&Tire, 4Hole 18X8.5X8"Foam Filled	-				
4.	627-771	Hub/Bearing, 4 Hole	1				
5.	L2050144	Bearing	2				
6.	627-764	Hub, 4 Hole	1				
7.	636-882	Spacer, Bearing 4-Hole Hub	1				
8.	613-1215J	Nut, Hex Nylock Jam ZP 3/4"	1				
9.	689-203R	Bracket, Tire Mount 886 Cultivator	1				
10.	689-212	Screw Jack Stud, 1"x14-3/8"	1				
11.	602-0608Z	Bolt, HCS 3/8"x2" (Gr 5) ZP	1				
12.	613-0600Z	Nut, Hex Nylock ZP 3/8"	1				
13.	624-112	Bushing, 1x1-1/4x9/16" W/HD	1				
14.	624-113	Washer, Nylon 2"ODx1"IDx.125"	1				
15.	689-222	Latch, Coulter Crank	1				

BIGHAM BROTHERS, INC.

Model 888 Cultivator Parts Breakdown (Barring-Off Discs) 889-530 Barring-Off Disc Bundle, Quick Adjust



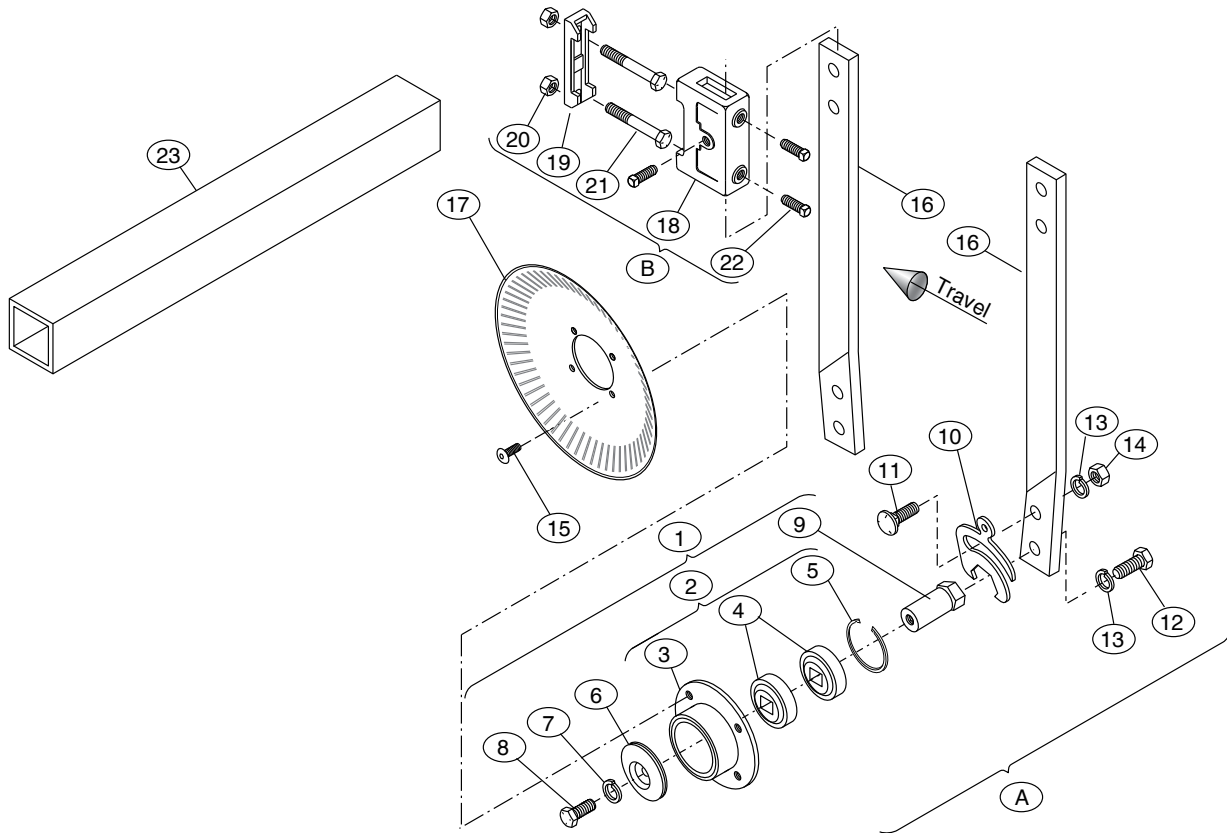
Ref#	P/N	Description	Qty. Req. Per Assy. (* As Required)	Ref#	P/N	Description	Qty. Req. Per Assy. (* As Required)
A.	812-142	Blade/Shank/Hub 16" Conc. 3/4" LH	-	16.	712-145	Shank, LH 3/4x2.5x27" B.O. Disc	*
	812-143	Blade/Shank/Hub 16" Conc. 3/4" RH	-		712-146	Shank, RH 3/4x2.5x27" B.O. Disc	*
1.	712-139	Spindle/Hub Assy., LH Cov. Disc HD	1	17.	630-028	Disc, concentric 16"x4.5mm 4 Hole	1
	712-140	Spindle/Hub Assy., RH Cov. Disc HD	1	B.		Quick-Adjust Clamp and Receiver	-
2.	627-773	Hub/Brg. Assy., Coulter Strip Till	1	18.	689-238	Bracket, Shank Mount Covering Disc	1
3.	627-772	Hub, Coulter Strip Till	1	19.	689-237	Receiver, Adjustable Covering Disc (One Receiver Per Gang)	1
4.	622-057	Bearing, 1-1/8" Sq W208PP5	2	20.	617-134M	Pin, Loxall 1/2x2-1/2" Formed	2
5.	627-010	Snap Ring, Disc Bedder Housing	1				
6.	636-884D	Shield, H.D. Covering Disc	1				
7.	615-1000Z	Washer, Lock ZP 5/8"	1				
8.	602-1005L	Bolt, HCS 5/8"x1-1/4" LH (GR5) ZP	1				
	602-1005R	Bolt, HCS 5/8"x1-1/4" RH (GR5) ZP	1				
9.	627-242LL	Spindle, 1.5" Hex 4 Hole LH LB	1				
	627-242LR	Spindle, 1.5" Hex 4 Hole RH LB	1				
10.	636-220	Lock Plate, Adj. Cov. Disc	1				
11.	610-1208Z	Machine Bolt, Crg 3/4"x2" Gr5	1				
12.	610-1207Z	Bolt, HCS 3/4"x1-3/4" Gr5	1				
13.	615-1200	Washer, Lock 3/4" (Plain)	2				
14.	611-1201Z	Nut, Hex ZP 3/4"	1				
15.	607-0804Z	Bolt, Button HD SS 1/2"-20X1" ZP (Allen head)	4				

(Clamps are not included with Blade/Shank/Hub Assemblies.)

Note: Shank and blade assemblies are pre-set at the factory to maximum pitch (20 degrees). Adjustments may be made by rotating the hex spindle (Ref. #9) through the lock plate (Ref. #10). Upper (flat) portion of the shank (Ref. #16) may be utilized for intermediate blade setting by flipping the shank top to bottom.

BIGHAM BROTHERS, INC.

Model 888 Cultivator Parts Breakdown 889-518, 889-518N (Barring Off Disc Bundles)

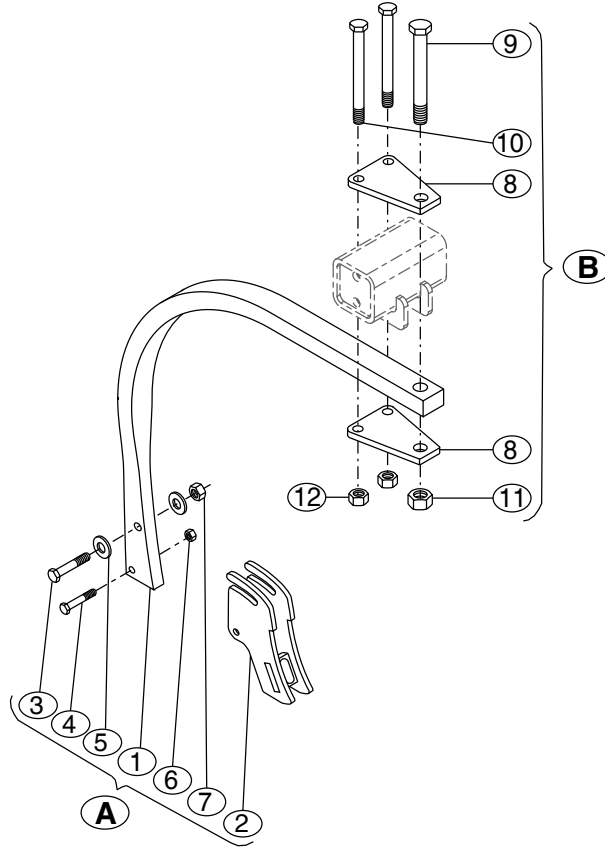


Ref#	P/N	Description	Qty. Req. Per Assy. (* As Required)	Ref#	P/N	Description	Qty. Req. Per Assy. (* As Required)
A.	812-136	Blade/Shank/Hub 16" Conc. 3/4" LH	-	16.	712-135	Shank, LH 3/4x2.5x27" Covering Disc	*
	812-136	Blade/Shank/Hub 16" Conc. 3/4" RH	-		712-136	Shank, RH 3/4x2.5x27" Covering Disc	*
1.	712-139	Spindle/Hub Assy., LH Cov. Disc HD	1	17.	630-028	Disc, concentric 16"x4.5mm 4 Hole	1
	712-140	Spindle/Hub Assy., RH Cov. Disc HD	1	B.	806-402	Clamp, 4x4 For 3/4x2-1/2" Shank	1
2.	627-773	Hub/Brg. Assy., Coulter Strip Till	1	18.	628-600	Body, Clamp 4" 3/4x2-1/2" Shank	-
3.	627-772	Hub, Coulter Strip Till	1	19.	628-200	Cap, 4" 3/4 Bolt Holes (Cast)	-
4.	622-057	Bearing, 1-1/8" Sq W208PP5	2	20.	611-1201Z	Nut, Hex ZP 3/4"	-
5.	627-010	Snap Ring, Disc Bedder Housing	1	21.	601-1224Z	Bolt, HCS 3/4"x6" Gr2 ZP	-
6.	636-884D	Shield, H.D. Covering Disc	1	22.	606-1006Z	Set Screw, Sq Head 5/8"x1-1/2" ZP	-
7.	615-1000Z	Washer, Lock ZP 5/8"	1				
8.	602-1005L	Bolt, HCS 5/8"x1-1/4" LH (GR5) ZP	1	23.	689-232	Tube, Coulter Mount 4x4x36"	-
	602-1005R	Bolt, HCS 5/8"x1-1/4" RH (GR5) ZP	1		689-227	Tube, Coulter Mount 4x4x36" (Narrow Row)	-
9.	627-242LL	Spindle, 1.5" Hex 4 Hole LH LB	1				
	627-242LR	Spindle, 1.5" Hex 4 Hole RH LB	1				
10.	636-220	Lock Plate, Adj. Cov. Disc	1				
11.	610-1208Z	Machine Bolt, Crg 3/4"x2" Gr5	1				
12.	602-1208Z	Bolt, HCS 3/4"x1-3/4" Gr5	1				
13.	615-1200	Washer, Lock 3/4" (Plain)	2				
14.	611-1201Z	Nut, Hex ZP 3/4"	1				
15.	607-0804Z	Bolt, Button HD SS 1/2"-20X1" ZP (Allen head)	4				

(Clamps are not included with Blade/Shank/Hub Assemblies.)
Note: Shank and blade assemblies are pre-set at the factory to maximum pitch (20 degrees). Adjustments may be made by rotating the hex spindle (Ref. #9) through the lock plate (Ref. #10). Upper (flat) portion of the shank (Ref. #16) may be utilized for intermediate blade setting by flipping the shank top to bottom.

BIGHAM BROTHERS, INC.

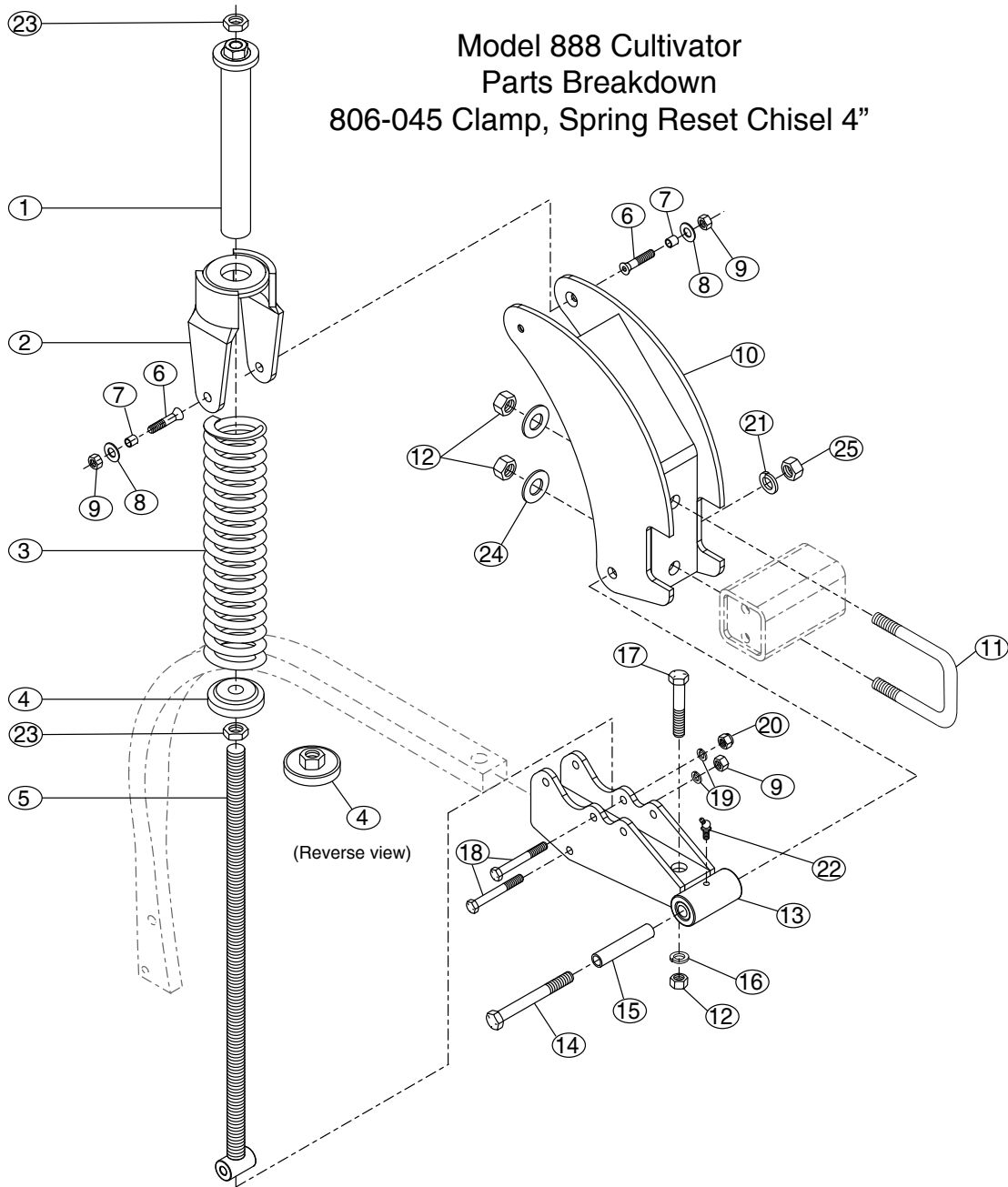
Model 888 Cultivator Parts Breakdown Rigid Chisel Shank



Ref#	P/N	Description	Qty. Req. Per Assy. (* As Required)	Ref#	P/N	Description	Qty. Req. Per Assy. (* As Required)
A.	705-310	Chisel Shank Assy. w/Adj. Foot Piece	-				
1.	631-017	Shank, Chisel (Soil Flow) 25.5"	1				
2.	636-159	Foot Piece No-Twist 1"x3" HS	1				
3.	602-1012Z	Bolt, HCS 5/8"x3" (Gr 5) ZP	1				
4.	602-0810Z	Bolt, HCS 1/2"x2-1/2" (Gr 5) ZP	1				
5.	616-1002Z	Washer, Flat 5/8" (Heavy) ZP	2				
6.	611-0801Z	Nut, Hex ZP 1/2" (Gr 5)	1				
7.	611-1001Z	Nut, Hex ZP 5/8"	1				
B.	806-044	Clamp, Chisel-4x4 Bar 1.25x2" Shank	-				
8.	628-403	Clamp, Chisel 4" (XHD)	2				
9.	601-1430Z	Bolt, HCS 7/8"x7-1/2" (Gr 2) ZP	1				
10.	601-1230Z	Bolt, HCS 3/4"x7-1/2" (Gr 2) ZP	2				
11.	611-1401Z	Nut, Hex ZP 7/8"	1				
12.	611-1201Z	Nut, Hex 3/4"	2				

BIGHAM BROTHERS, INC.

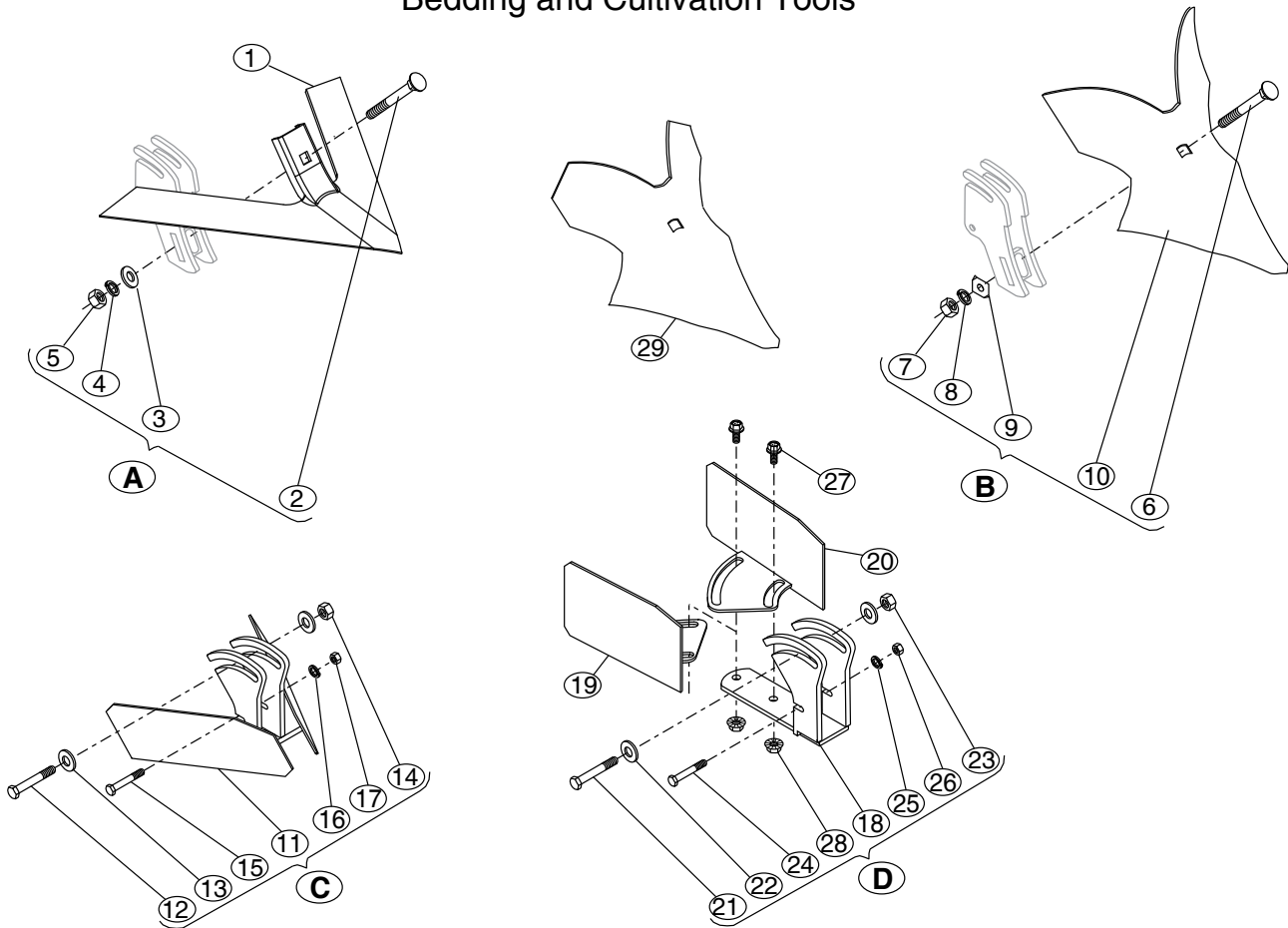
Model 888 Cultivator Parts Breakdown 806-045 Clamp, Spring Reset Chisel 4"



Ref#	P/N	Description	Qty. Req. Per Assy. (* As Required)	Ref#	P/N	Description	Qty. Req. Per Assy. (* As Required)
1.	689-255	Spring Guide, Chisel Shank	1	16.	615-1400	Washer, Lock 7/8" (Plain)	1
2.	689-254	Trunnion, Spring Loaded Chisel	1	17.	602-1412Z	Bolt, HCS 7/8"x3" (Gr 5) ZP	1
3.	633-022	Spring, Auto Reset Chisel	1	18.	602-0814Z	Bolt, HCS 1/2"x3-1/2" (Gr 5) ZP	2
4.	689-253	Spring Cap Weldment, Lower Chisel	1	19.	615-0800Z	Washer, Lock ZP 1/2"	2
5.	685-238	Threaded Rod w/Bushing, Chisel Shank	1	20.	613-0800Z	Nut, Hex Nylock 1/2" ZP	1
6.	607-0807	Bolt, Flat Socket Head 1/2"x1-3/4"	2	21.	615-1200Z	Washer, Lock 3/4"	1
7.	636-308	Bushing, Pivot Spring Trunnion	2	22.	617-012	Zerk, 1/8 NPT 45 Degree	1
8.	616-0800Z	Washer, Flat ZP 1/2"	2	23.	614-1601Z	Nut, Hex Jam 1" ZP	2
9.	611-0801Z	Nut, Hex ZP 1/2" (Gr 5)	3	24.	616-1402	Washer, Structural 7/8" F-436	2
10.	689-250	Bracket, Chisel Spring Tip	1	25.	611-1201Z	Nut, Hex ZP 3/4	1
11.	610-0035	U-Bolt, 7/8" For 4x4" (Gr 5) ZP	1				
12.	611-1401Z	Nut, Hex ZP 7/8"	4				
13.	689-249	Clevis, 1-1/4"x2" Chisel Shank	1				
14.	602-1224Z	Bolt, HCS 3/4"x6" (Gr 5) ZP	1				
15.	636-309	Bushing, Pivot Chisel Shank	1				

BIGHAM BROTHERS, INC.

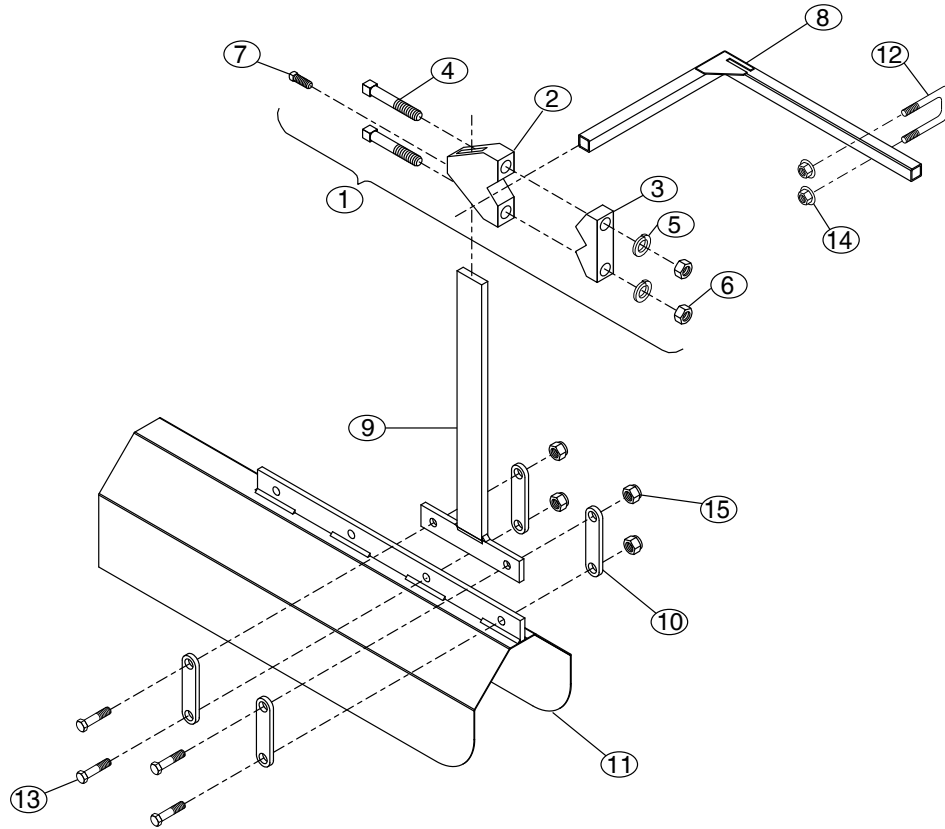
Model 888 Cultivator Parts Breakdown Bedding and Cultivation Tools



Ref#	P/N	Description	Qty. Req. Per Assy. (* As Required)	Ref#	P/N	Description	Qty. Req. Per Assy. (* As Required)
1.	638-025	Sweep BBI Heavy Wing 24" HS	-	12.	602-1016Z	Bolt, HCS 5/8"x4" (Gr 5) ZP	1
	638-025P	Sweep BBI Heavy Wing 24" Plain (Not hard-surfaced)	-	13.	616-1002Z	Washer, Flat 5/8" (Heavy) ZP	2
A.	638-050	Bolt, Nut & Washer Pack, Cult Sweep	-	14.	611-1001Z	Nut, Hex ZP 5/8"	1
2.	604-1018Z	Bolt, Carriage 5/8"x4-1/2" (Gr 5) ZP	1	15.	602-0814Z	Bolt, HCS 1/2"x3-1/2" (Gr 5) ZP	1
	604-1018H	Bolt, Carriage 5/8"x4-1/2" (Gr 9) ZP (Optional)	-	16.	615-0800Z	Washer, Lock ZP 1/2"	1
3.	616-1002Z	Washer, Flat 5/8" (Heavy) ZP	1	17.	611-0801Z	Nut, Hex ZP 1/2" (Gr 5)	1
4.	615-1000Z	Washer, Lock ZP 5/8"	1	D.	889-353	Bedding Sweep Assy., Adjust. Chisel	-
5.	611-1001Z	Nut, Hex ZP 5/8"	1	18.	689-260	Foot Piece, Adj. Bedding Sweep	1
B.	870-150	Buster BBI 348 W/Bolt Kit	-	19.	689-249R	Plate, RH Adj. Ridging Wing	1
6.	604-1220Z	Bolt, Crg 3/4 x 5" (Gr 5) ZP	1	20.	689-249L	Plate, LH Adj. Ridging Wing	1
	604-1220H	Bolt, Crg 3/4 x 5" (Gr 9) ZP (Optional)	-	21.	602-1016Z	Bolt, HCS 5/8"x4" (Gr 5) ZP	1
7.	611-1201Z	Nut, Hex ZP 3/4"	1	22.	616-1002Z	Washer, Flat 5/8" (Heavy) ZP	2
8.	615-1200Z	Wshr., Lock ZP 3/4"	1	23.	611-1001Z	Nut, Hex ZP 5/8"	1
9.	638-578	Washer, Square #346 Buster	1	24.	602-0814Z	Bolt, HCS 1/2"x3-3/4" (Gr 5) ZP	1
10.	638-348G	Buster, 15" Bigham Hi-Wing	1	25.	615-0800Z	Washer, Lock ZP 1/2"	1
C.	689-248	Bedding Sweep Assy., Chisel	-	26.	611-0801Z	Nut, Hex ZP 1/2" (Gr 5)	1
11.	689-248	Sweep Weldment, Chisel Bedder	1	27.	602-0808F	Bolt, Flange HD 1/2x2" (Gr 5) ZP	2
				28.	614-0801Z	Bolt, Hex Serrated Flange 1/2"	2
				29.	638-349	Buster, 15" Bigham Clipped Wing	-

BIGHAM BROTHERS, INC.

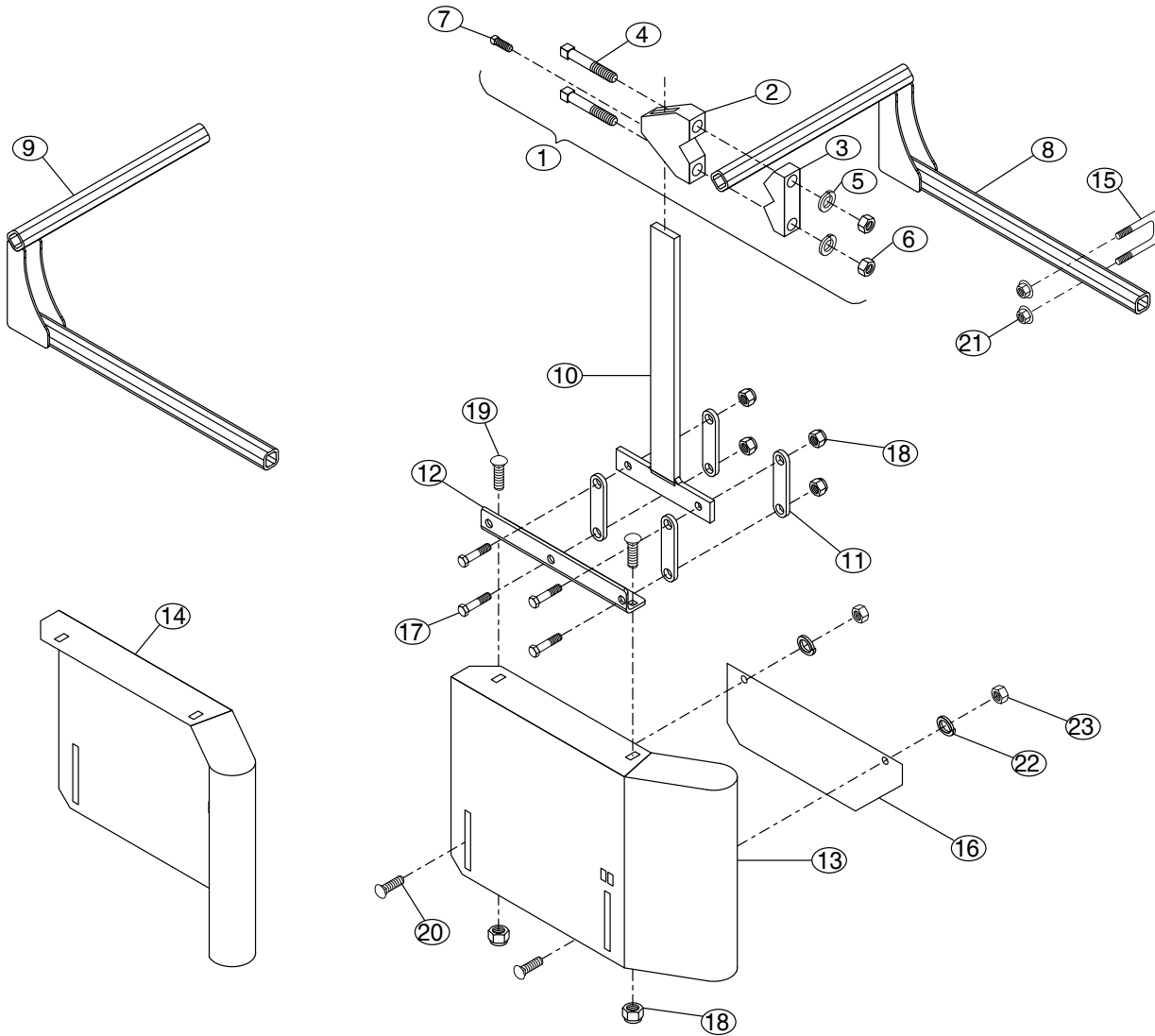
Model 888 Cultivator Parts Breakdown 760-814 Crop Hood Bundle Assembly



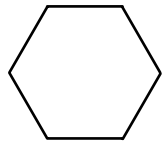
Ref#	P/N	Description	Qty. Req. Per Assy. (* As Required)	Ref#	P/N	Description	Qty. Req. Per Assy. (* As Required)
1.	L2010071	Diamond Clamp & Cap Assy	1				
2.	L2000036	Bracket Clamp	1				
3.	L50000025	Clamp	1				
4.	L7161630	Bolt, Square Head 1/2x3" Gr 5 ZP	2				
5.	615-0800Z	Washer, Lock ZP 1/2"	2				
6.	611-0801Z	Nut, Hex ZP 1/2" (Gr 5)	2				
7.	606-0803Z	Set Screw, Square Head 1/2"x3/4"	1				
8.	689-245	L-Bracket, Fender Mount 888 Cult.	1				
9.	715-613	Shank, Hood Fender 1/2"x2"x18"	1				
10.	715-605	Lugs, Pivot Hood Fender	2				
11.	715-601	Hood, Fender 30"	1				
12.	610-0017	U-Bolt, 3/8" For 1.25" Square Bar ZP	1				
13.	601-0808Z	Bolt, HCS 1/2"x2" (Gr 2) ZP	4				
14.	614-0601Z	Nut, Flange ZP 3/8"	2				
15.		Nut, Hex Nylock ZP 1/2"	4				

BIGHAM BROTHERS, INC.

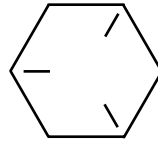
Model 888 Cultivator Parts Breakdown 760-815 Crop Shield Bundle Assembly



Ref#	P/N	Description	Qty. Req. Per Assy. (* As Required)	Ref#	P/N	Description	Qty. Req. Per Assy. (* As Required)
1.	L2010071	Diamond Clamp & Cap Assy	2	16.	L2007018	Crop Shield Extension	2
2.	L2000036	Bracket Clamp	2	17.	601-0808Z	Bolt, HCS 1/2"x2" (Gr 2) ZP	8
3.	L50000025	Clamp	2	18.	613-0800Z	Nut, Hex Nylock ZP 1/2"	12
4.	L7161630	Bolt, Square Head 1/2"x3" Gr 5 ZP	4	19.	604-0805Z	Bolt, Carriage 1/2"x1-1/4" (Gr 5) ZP	4
5.	615-0800Z	Washer, Lock ZP 1/2"	4	20.	604-0603Z	Bolt, Carriage 3/8"x3/4" (Gr 5) ZP	4
6.	611-0801Z	Nut, Hex ZP 1/2" (Gr 5)	4	21.	614-0601Z	Nut, Flange ZP 3/8"	4
7.	606-0803Z	Set Screw, Square Head 1/2"x3/4"	2	22.	615-0600Z	Washer, Lock ZP 3/8"	4
8.	689-245L	Mount Arm, Crop Shield LH	1	23.	611-0601Z	Nut, Hex ZP 3/8"	4
9.	689-245R	Mount Arm, Crop Shield RH	1				
10.	715-613	Shank, Hood Fender 1/2"x2"x18"	2				
11.	715-605	Lugs, Pivot Hood Fender	8				
12.	715-615	Bracket, Hood Pivot 888 Cultivator	2				
13.	L2008075	Crop Shield, LH	1				
14.	L2008076	Crop Shield, RH	1				
15.	610-0017	U-Bolt, 3/8" For 1.25" Square Bar ZP	2				



GRADE 2
No Marks



GRADE 5
3 Lines on
Bolt Head

RECOMMENDED ASSEMBLY TORQUES FOR HEXAGON HEAD CAP SCREWS

Based on dry assembly. Variables such as lubrication, plating etc. may reduce the values listed below as much as 20%, and must be taken into consideration.

	Bright Cap Screws 1018 Grade 2			Heat Treated 1038 Hexagon Head Cap Screws, SAE Grade 5			
Cap Screw Diam.	Yield Strength PSI Min.	Recommended Torque (Ft. Lbs.)		Yield Strength PSI Min.	Tensile Strength PSI Min.	Recommended Torque (Ft. Lbs.)	
		UNC	UNF			UNC	UNF
1/4"	58,000	6	7	90,000	120,000	11	13
5/16"	58,000	13	14	90,000	120,000	21	23
3/8"	58,000	23	26	90,000	120,000	38	40
7/16"	58,000	37	41	90,000	120,000	55	60
1/2"	58,000	57	64	90,000	120,000	85	95
5/8"	55,000	111	128	90,000	120,000	175	210
3/4"	55,000	200	223	90,000	120,000	300	330
7/8"	55,000	315	340	81,000	115,000	450	490
1"	50,000	400	460	81,000	115,000	680	715
1-1/8"	50,000	570	635	77,000	105,000	885	990

General Formula for calculating Torque is as follows:

Torque in Inch Lbs. = .2 x Nominal Diameter of Screw x Load in Lbs., where Load = 80% of Yield Strength, expressed in Lbs., not pounds per square inch.

The tension induced in a cap screw may be checked by measuring overall length before torquing and then under torque load. The screw stretches .001" per inch of screw length for each 30,000# P.S.I. induced tension. Applies only to loads below the yield point.

BIGHAM BROTHERS, INC.

Notes: