

# ROD WEEDERS

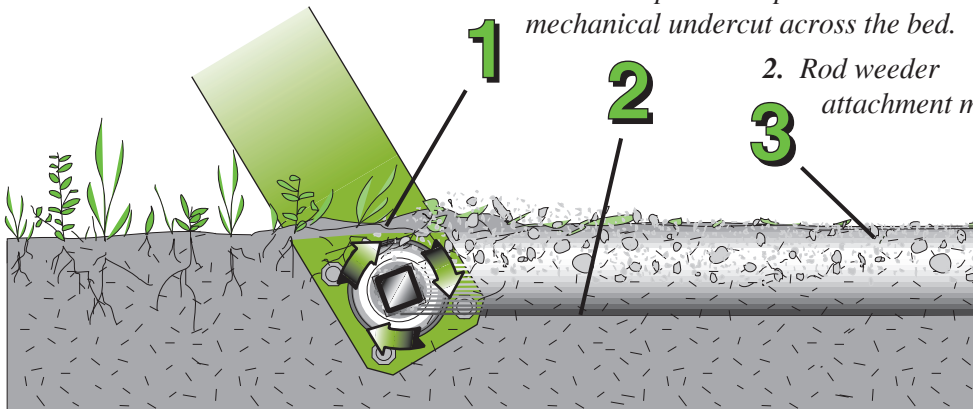
C-7

Remove weeds and condition seedbeds for excellent planting results with Bigham Brothers' wide selection of Rod Weeders. High carbon 1" square rod counter rotates under the seedbed to perform three jobs to enhance planter performance and seed emergence in row crops. Rod drive units may be selected to complement tractor equipment and a wide variety of rod placement hangers may be chosen to place rod accurately on any tool bar make-up. Rod weeder rod executes three important functions to prepare a seedbed:

1. Counter-rotation of rod uproots weeds and provide a positive mechanical undercut across the bed.

2. Rod weeder attachment may be adjusted to operate rod at anticipated planting depth. Rod seals moisture at operating depth so that seed may be placed in fresh, moist soil.

3. Upper soil profile is agitated for surface drying. Dry soil on top acts as an abrasive to keep planter disc openers clean and prevent baking.



The Hydraulic End Drive Rod Weeder eliminates common headaches associated with conventional PTO driven Rod Weeders. Hydraulic End Drive Kits are used as complete attachments or as Changeover Kits for PTO driven rod weeders. (Bigham 6 or 12" offset, Hamby, or Roll-A-Cone)



## Complete End Drive Rod Weeder Attachments

| P/N     | Description | Bearing Hangers Type | Qty. | Rod Length | Approx. Ship Wt. |
|---------|-------------|----------------------|------|------------|------------------|
| 811-609 | 6 Row       | 6" O.S.              | 7    | 20'8"      | 265 Lbs.         |
| 811-615 | 6 Row       | 12" O.S.             | 7    | 20'8"      | 270 Lbs.         |
| 811-809 | 8 Row       | 6" O.S.              | 9    | 27'6"      | 330 Lbs.         |
| 811-815 | 8 Row       | 12" O.S.             | 9    | 27'6"      | 335 Lbs.         |

End Drive Rod Weeder Attachments Include: Hydraulic motor and mount hardware for 2 x 4" tool bar end cap, Drive connector with U-Joint, bearing hangers as noted, 1" Square rods with couplers as required (for 40" rows) and three 1" square set collars. **Hoses are not included.** Tool bar, shanks and clamps are pictured but not included. Please specify and substitute rods if for other than 40" rows.

## Standard Features:

- Dependable motor is mounted to provide adjustment for virtually any application. Lower torque of motor will prevent damage if rod is in a bind or locks down.
- Drive connector with dry-cap U-Joint assures a simple, reliable drive transfer that is easy to replace.
- Triple sealed permanently lubricated ball bearings are supplied in a wide selection of bearing hangers.
- High-Carbon 1" square steel rod for long life in abrasive soil.

## Hydraulic Changeover Kits

| P/N        | Center Bearing Hanger Type | Approx. Ship Wt. |
|------------|----------------------------|------------------|
| 811-505B   | Bigham 6" O.S.             | 78 Lbs.          |
| 811-505B12 | Bigham 12" O.S.            | 80 Lbs.          |
| 811-505H   | Hamby Rod Weeder           | 75 Lbs.          |
| 811-505R   | Roll-A-Cone Rod Weeder     | 75 Lbs.          |

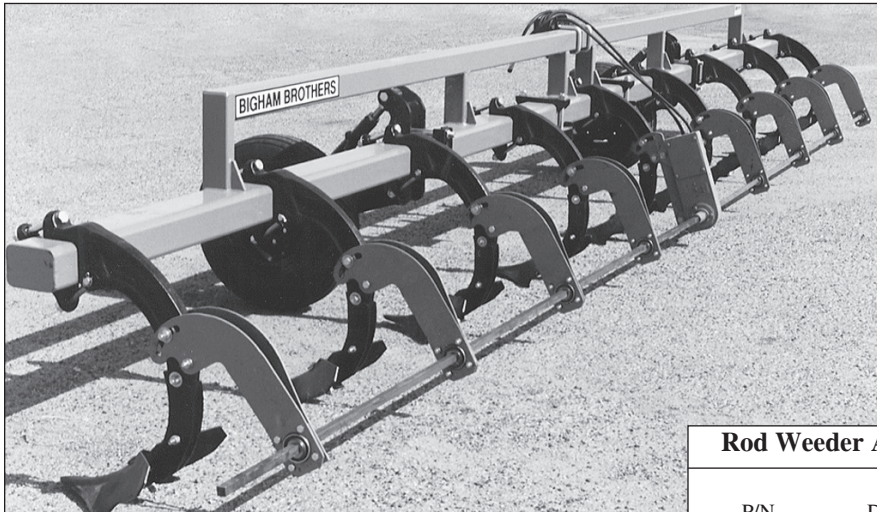
Hydraulic Changeover Kits Include: Motor and mount hardware for 2x4" tool bar end cap, One bearing hanger to replace boot as noted, Splice kit for center of rod and three 1" square set collars. **Hoses are not included.**



Lubbock, Texas (800) 692-4449  
 Carlisle, Arkansas (870) 552-7517  
[www.BighamAg.com](http://www.BighamAg.com)

# ROD WEEDERS

(H.C. Lister, Direct Drive Kit)



Remove weeds and condition seedbeds behind your High Clearance Lister with the Bigham Brothers Hydraulic Center Drive Rod Weeder specifically designed for the high clearance lister beam. This attachment will knock the top of the bed down, seal moisture at a consistent depth and condition the very top of the bed to act as an abrasive when you follow with a planter equipped with double disc openers.

## Standard Features:

### Rod Weeder Attachments for High Clearance Listers

| P/N            | Description   | Bearing Hanger Qty. | Overall Rod Length | Approx. Ship Wt. |
|----------------|---------------|---------------------|--------------------|------------------|
| <b>811-845</b> | <b>4 Row</b>  | <b>4</b>            | <b>22'</b>         | <b>230 Lbs.</b>  |
| <b>811-847</b> | <b>6 Row</b>  | <b>6</b>            | <b>22'</b>         | <b>300 Lbs.</b>  |
| <b>811-849</b> | <b>8 Row</b>  | <b>8</b>            | <b>28'8"</b>       | <b>375 Lbs.</b>  |
| <b>811-851</b> | <b>10 Row</b> | <b>10</b>           | <b>34'</b>         | <b>425 Lbs.</b>  |

*Rod Weeder Attachments for High Clearance Listers Include:* Hydraulic motor and boot assembly, mount bracket for center boot assembly, bearing hangers as noted and rods as required. **Kits include all bolts and hardware required to attach to existing High Clearance Lister. Hoses are not included.** Please specify and substitute rods for other than 40" rows.

- **Mounting Kits:** Bearing hangers and center boot mount attach to holes provided in most cast high clearance type lister beams with no modifications required (Bigham, John Deere and Johnson). Mount brackets are slotted to allow variable depth adjustment. Yoke type design of bearing hangers provides strength and durability.

- **Lower torque motor will help prevent damage** if an obstruction is hit or if rod is in a bind. Tractor hydraulic flow can be adjusted to regulate rod rotation speed.

The New Direct Drive Rod Weeder has been designed with simplicity as the primary objective. Direct connection from the motor to the rod is an effective way to reduce moving parts to improve service in the field. The motor mounting assembly has been designed for our Danfoss narrow profile compact motor. The narrow drive may be mounted in the bottom of the furrow without knocking down beds. Universal mount allows drive motor to be attached to the left or right side of the tool bar. Additional double lip seal in the mounting protects motor shaft input. Standard kit is compatible with Bigham Brothers 6" offset, Hamby and Roll-A-Cone rod weeders.

### Direct Drive End Kit

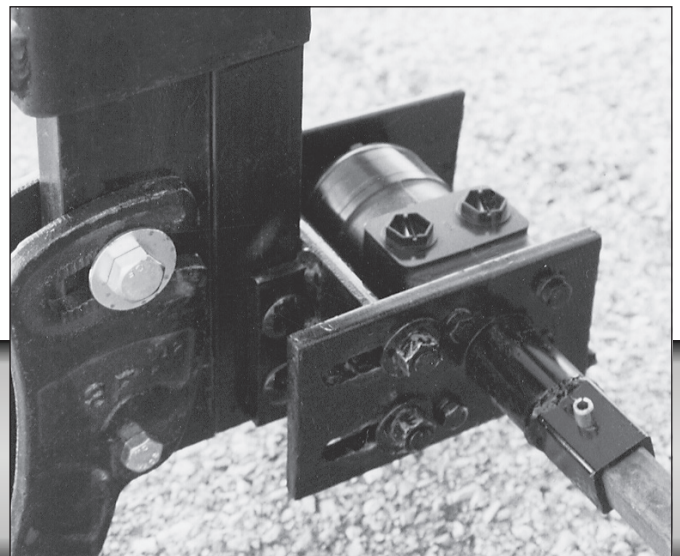
| P/N            | Description             | Approx. Ship Wt. |
|----------------|-------------------------|------------------|
| <b>811-510</b> | <b>Direct Drive Kit</b> | <b>35 Lbs.</b>   |

*Direct Drive End Kit Includes:* Hydraulic motor with mount hardware for 1x3" shank and drive coupler. **Hoses are not included.**

### Direct Drive Hydraulic Rod Weeder Attachments

| P/N            | Description  | Bearing Hanger Qty. | Overall Rod Length | Approx. Ship Wt. |
|----------------|--------------|---------------------|--------------------|------------------|
| <b>811-610</b> | <b>6 Row</b> | <b>6</b>            | <b>20'8"</b>       | <b>280 Lbs.</b>  |
| <b>811-810</b> | <b>8 Row</b> | <b>8</b>            | <b>27'6"</b>       | <b>355 Lbs.</b>  |

*Direct Drive Rod Weeder Attachments Include:* Hydraulic motor and mount hardware for 1x3" shank, drive coupler, bearing hangers as noted, 1" Square rods with couplers as required (for 40" rows) and three 1" square set collars. **Hoses are not included.** Please specify and substitute rods for other than 40" rows.

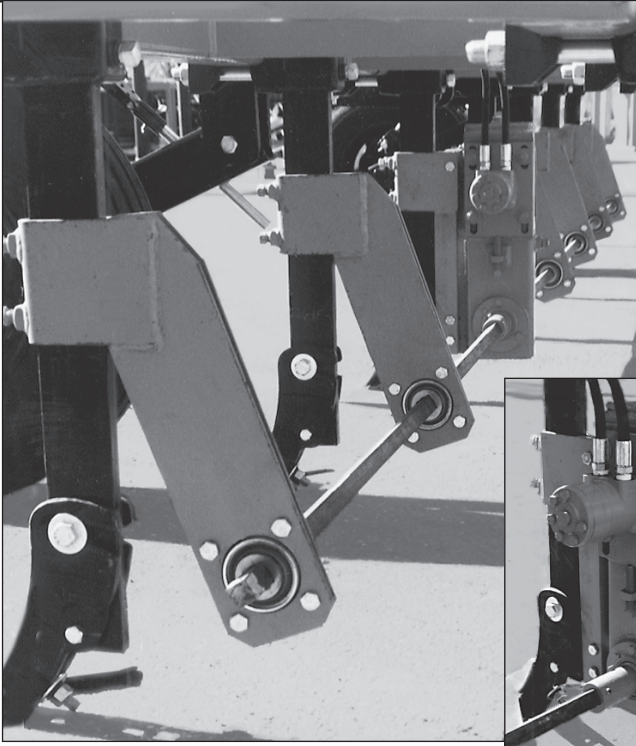




# ROD WEEDERS

## (Center Boot Drive; Folding Rod Weeders)

C-9



Rod Weeders have long been the tools which have set the standards of excellence in preparing seedbeds for row crops. The Bigham Brothers Center Boot Drive Rod Weeder is designed to do a precision job and built to last. The hex shaft boot design introduced in 1984 has proven to be superior in the field. This durable chain assembly is complemented by fully adjustable mount hardware and bearing hangers to be adaptable as an attachment to most any pre-plant or planting implement.

### Standard Features:

- Choice of Hydraulic Boot Drive or PTO (1000 or 540 RPM).
- Boot design incorporates 60H chain tension adjustment. Gaskets and O-rings seal the boot to hold lubricating oil.
- Triple sealed permanently lubricated ball bearings.
- Hydraulic boot drive provides mounting flexibility. Boot may be placed in tractor tire middle or any other middle for special applications. Hydraulic motor will most likely discontinue rotation in the event of bearing failure or collision.
- 1" Square steel rod is cut from C-1055 high carbon material for longer wear and to prevent bending of rod.

### PTO Drive Rod Weeder Attachments

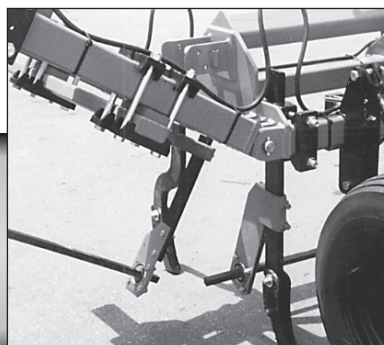
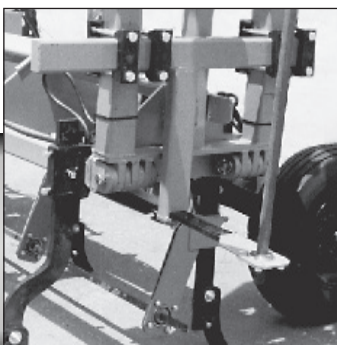
| Hydraulic Boot Drive Rod Weeder Attachments |             |                      |      |                    |                  |
|---|-------------|----------------------|------|--------------------|------------------|
| P/N   | Description | Bearing Hangers Type | Qty. | Overall Rod Length | Approx. Ship Wt. |
| 811-608                                     | 6 Row       | 6" O.S.              | 6    | 22'                | 275 Lbs.         |
| 811-615                                     | 6 Row       | 12" O.S.             | 6    | 22'                | 285 Lbs.         |
| 811-808                                     | 8 Row       | 6" O.S.              | 8    | 28'8"              | 340 Lbs.         |
| 811-815                                     | 8 Row       | 12" O.S.             | 8    | 28'8"              | 350 Lbs.         |
| 811-808                                     | 10 Row      | 6" O.S.              | 10   | 34'                | 405 Lbs.         |
| 811-815                                     | 10 Row      | 12" O.S.             | 10   | 34'                | 420 Lbs.         |

Hydraulic Center Boot Drive Rod Weeder Attachments Include: Hydraulic motor and boot assembly, mount bracket for center boot assembly (6" or 12" offset), bearing hangers as noted and rods as required. **Hoses are not included.** Please specify and substitute rods for other than 40" rows.

| P/N     | Description | PTO RPM | Bearing Hanger Type | Qty. | Overall Rod Length | Approx. Ship Wt. |
|---------|-------------|---------|---------------------|------|--------------------|------------------|
| 811-406 | 4 Row       | 540     | 6" O.S.             | 4    | 15'4"              | 250 Lbs.         |
| 811-407 | 4 Row       | 1000    | 6" O.S.             | 4    | 15'4"              | 250 Lbs.         |
| 811-412 | 4 Row       | 540     | 12" O.S.            | 4    | 15'4"              | 255 Lbs.         |
| 811-413 | 4 Row       | 1000    | 12" O.S.            | 4    | 15'4"              | 255 Lbs.         |
| 811-606 | 6 Row       | 540     | 6" O.S.             | 6    | 22'                | 310 Lbs.         |
| 811-612 | 6 Row       | 540     | 12" O.S.            | 6    | 22'                | 320 Lbs.         |
| 811-806 | 8 Row       | 540     | 6" O.S.             | 8    | 29'8"              | 375 Lbs.         |
| 811-812 | 8 Row       | 540     | 12" O.S.            | 8    | 28'8"              | 385 Lbs.         |

PTO Drive Rod Weeder Attachments Include: PTO Drive assembly with safety shield as noted (Overall length of shaft is 41" in collapsed position. Check relationship of drive to tractor before lifting the three point implement.) #421 Gearbox and Boot assembly, (All gear boxes are 2:1 ratio; 540 RPM drive is recommended, 1000 RPM drive is available on request), mount bracket for center boot assembly, Bearing hangers as indicated, and rods as required. Mounting shanks are pictured but not included. Please specify and substitute rods for other than 40" rows.

Rod Weeders for Folding Tool Bars feature three independent drives to keep maintenance and repairs to a minimum. Three matched motors are plumbed in a series to utilize one remote hydraulic outlet. Rod support kit will attach to wings so there is no skip between rods or bearing hangers. Rod is staggered from center section (6" Offset) to wings (12" Offset). Optional drives may be substituted if desired.



### Rod Weeder Attachments for Folding Tool Bars

| P/N     | Description  | Bearing Hangers 6" | Bearing Hangers 12" | Overall Rod Length | Approx. Ship Wt. |
|---------|--------------|--------------------|---------------------|--------------------|------------------|
| 811-850 | 8 Row (5+4)  | 4                  | 4                   | 28'                | 685 Lbs.         |
| 811-855 | 10 Row (5+6) | 4                  | 6                   | 34'                | 715 Lbs.         |
| 811-860 | 12 Row (7+6) | 6                  | 6                   | 42'                | 755 Lbs.         |

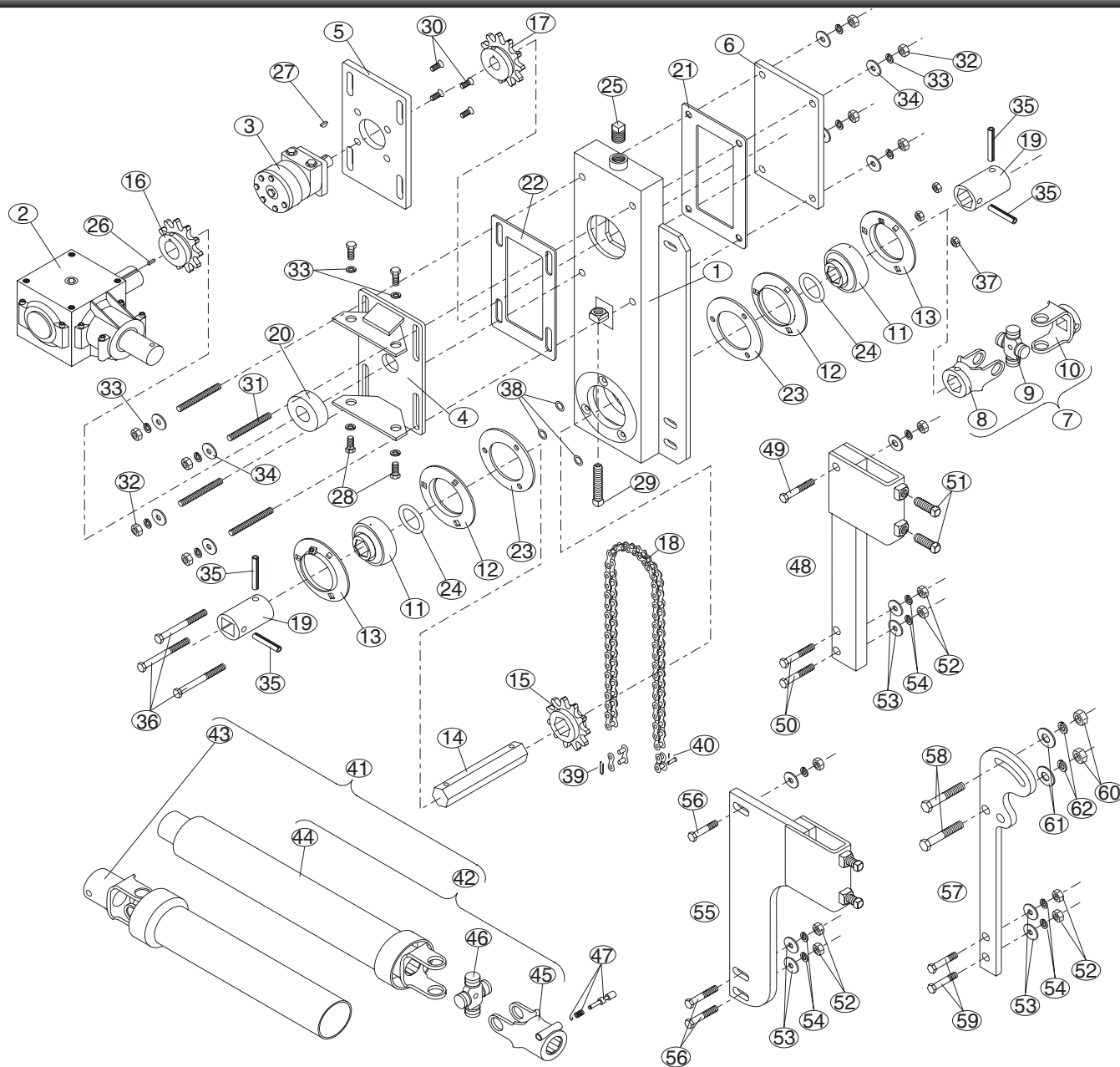
Rod Weeder Attachments for Folding Tool Bars Include: Hydraulic motor and boot assembly with mount for center section, two hydraulic end drive kits for wings, rod support kit for hinges, bearing hangers as noted and rods as required. **Hoses are not included.** Please specify and substitute rods for other than 40" rows.

**811-815 Rod Support Kit 420 Lbs.**

Rod support kit includes two support frames with mounting hardware to bolt to both wings, two shanks and two bearing mount plates with bearings

# Center Boot Drive Rod Weeder

## (Parts Diagram)



| Ref. | P/N            | Description                                 | Qty. Req. Per Assy. | Ref. | P/N      | Description                            | Qty. Req. Per Assy. |
|------|----------------|---|---------------------|------|----------|--|---------------------|
|      | <b>711-125</b> | <b>Gear Box &amp; Boot Assy., PTO Drive</b> |                     | 14.  | 626-107  | Shaft, Hex 1-1/8" RW Boot              | 1*                  |
|      | <b>711-126</b> | <b>Hydraulic Motor and Boot Assy.</b>       |                     | 15.  | 626-110  | Sprocket 60B11, 1-1/8" Hex Bore        | 1*                  |
| 1.   | 711-122        | Housing, R.W. Boot Wlmt. 2x6x20"            | 1                   | 16.  | 626-006  | Sprocket 60B11, 1-1/4" Bore, #421 G.B. | 1*                  |
| 2.   | 626-421        | Gear Box, #421 2:1 Ratio                    | 1                   | 17.  | 626-008  | Sprocket for hydraulic motor           | 1*                  |
| 3.   | 619-028        | Motor, Hydraulic (8 C.I.)                   | 1*                  | 18.  | 626-109  | Chain, Heavy (60H/43 Pitch)            | 1*                  |
| 4.   | 711-094        | Mount Bracket for #421 Gear B               | 1                   | 19.  | 628-205  | Coupler 1-1/8" Hex to 1" Square        | 2*                  |
| 5.   | 711-093        | Mount Plate, Hydraulic Motor                | 1*                  | 20.  | 626-001  | Seal, (Felt) Gear Box Shaft            | 1*                  |
| 6.   | 626-005        | Plate, Boot Inspection                      | 1                   | 21.  | 626-002M | Gasket, Inspection Plate               | 1*                  |
| 7.   | 625-589        | U-Joint (#6) 1" Sqr. to 1-1/8" Hex          | 2                   |      | 626-002  | Gasket, Inspection Plate               | 1*                  |
| 8.   | 625-609        | Yoke (#6) 1-1/8" Hex                        | 1                   | 22.  | 626-003M | Gasket, Gear Box/Motor Mount           | 1*                  |
| 9.   | 625-601        | Cross Bearing #6 U-Joint (Dry Cap)          | 1                   |      | 626-003  | Gasket, Gear Box/Motor Mount           | 1*                  |
| 10.  | 625-602        | Yoke (#6) 1" Square                         | 1                   | 23.  | 626-004  | Gasket, Bottom Boot Flange             | 2*                  |
| 11.  | 622-064        | Bearing, 1-1/8" Hex Bore                    | 2*                  | 24.  | 623-012  | O-Ring (319)                           | 2*                  |
| 12.  | 622-102        | Flangett, 72 MS                             | 2*                  |      | 623-010  | O-Ring (215)                           | 2*                  |
| 13.  | 622-104        | Flangett, 72 MS with Grease Zerk            | 2*                  | 25.  | 617-280  | Pipe Plug, 1/2" NPT                    | 2                   |

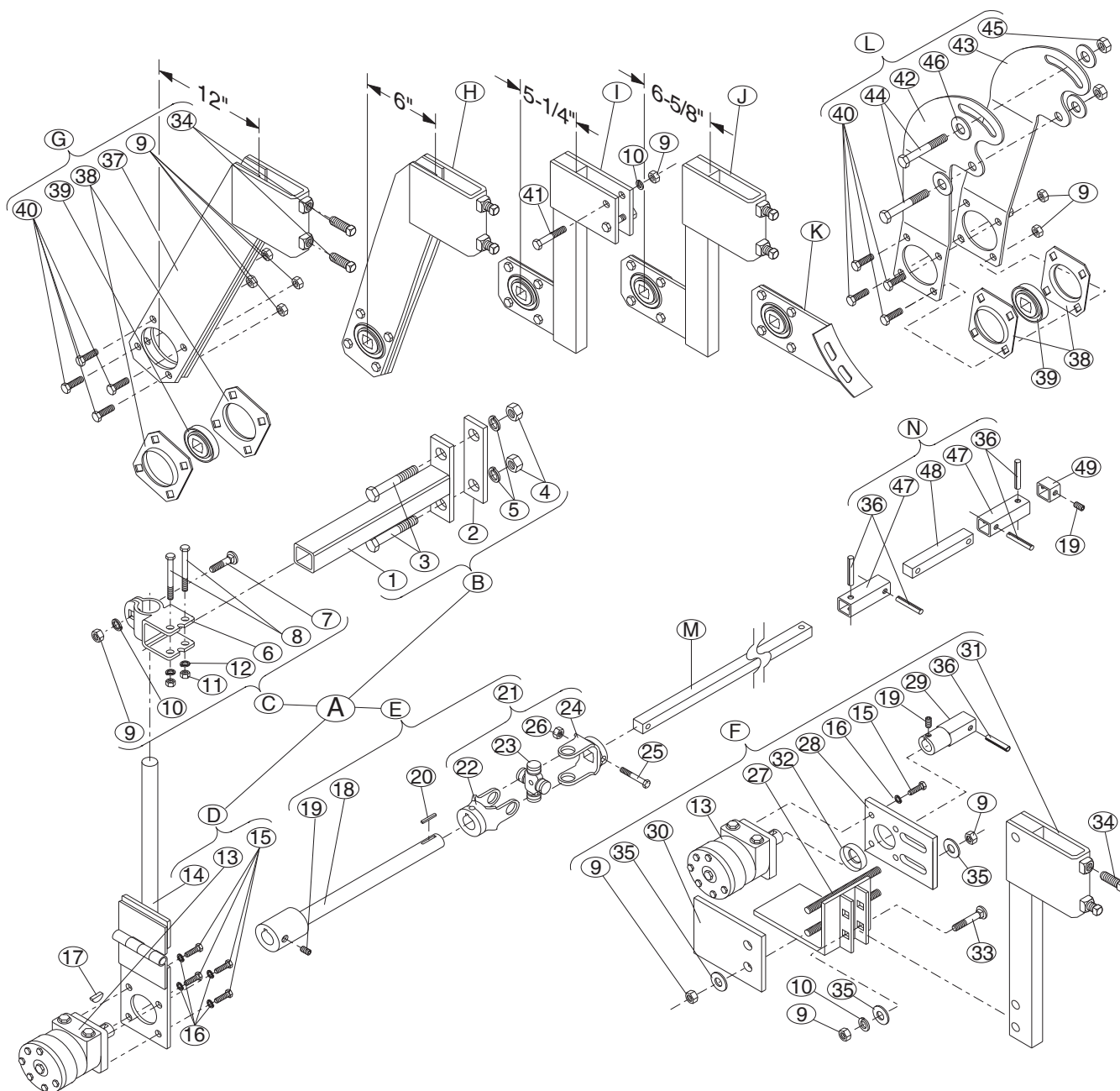
| Ref.  | P/N             | Description                                     | Qty. Req. Per Assy. | Ref.               | P/N                               | Description               | Qty. Req. Per Assy. |
|---|-----------------|---|---------------------|--------------------|-----------------------------------|---------------------------|---------------------|
| 26.   | 626-942         | Key, Square 1/4" x 1"                           | 1                   |                    | 625-115                           | Shaft Assy., 540 RPM      |                     |
| 27.   | 626-012         | Key, Woodruff 1/4" x 1"                         | 1*                  | 43.                | 625-104                           | Tube Assy., 1-1/4" Round  |                     |
| 28.   | 601-0804Z       | Bolt, HCS Z.P. 1/2" x 1"                        | 4                   | 44.                | 625-395                           | Safety Shield             |                     |
| 29.   | 606-1012Z       | Set Screw, Sqr. Hd. ZP 5/8 x 3"                 | 1                   | 46.                | 625-599                           | Bearing, Cross #14        |                     |
| 30.   | 607-0604Z       | Bolt, 3/8 x 1" Flat Socket Head                 | 4*                  | 45.                | 625-606                           | Yoke, #14 1-1/4" Round    |                     |
| 31.   | 610-0814        | Stud, B7 1/2 x 4-1/2"                           | 4                   | 46.                | 625-596                           | Yoke, #14 540 RPM         |                     |
| 32.   | 611-0801Z       | Nut, Hex ZP 1/2"                                | 8                   |                    | 625-597                           | Yoke, #14 1000 RPM        |                     |
| 33.   | 615-0800Z       | Washer, Lock Z.P. 1/2"                          | 8                   | 47.                | 625-706                           | Pin Assy., 540 (Cast)     |                     |
| 34.   | 616-0800Z       | Washer, Flat Z.P. 1/2"                          | 8                   |                    | 625-707                           | Pin Assy., 540 (Fab.)     |                     |
| 35.   | 617-052         | Pin, Roll ZP 3/8" x 2"                          | 4*                  |                    | 625-721                           | Pin Assy., 1000 (Cast)    |                     |
| 36.   | 602-0616Z       | Bolt, HCS ZP GR5 3/8 x 4"                       | 3                   |                    | 625-722                           | Pin Assy., 1000 (Fab.)    |                     |
| 37.   | 611-0601Z       | Nut, Hex ZP 3/8"                                | 3                   | <b>48. 711-006</b> | <b>Bracket, Center 6" O.S.</b>    |                           |                     |
| 38.   | 623-009         | O-Ring (204)                                    | 6*                  | 49.                | 601-0810Z                         | Bolt, HCS ZP 1/2 x 2-1/2" | 1                   |
| 39.   | 626-014         | Link, Connecting #60H Chain                     | -                   | 50.                | 601-0809Z                         | Bolt, HCS ZP 1/2 x 2-1/4" | 2                   |
| 40.   | 626-015         | Link, Offset #60H Chain                         | -                   | 51.                | 606-1006Z                         | Set Screw, 5/8 x 1-1/2"   | -                   |
| *   | <b>711-000</b>  | <b>Overhaul Kit, Rod Weedee Boot (Cast/PTO)</b> |                     | 52.                | 611-0801Z                         | Nut, Hex ZP 1/2"          | 3                   |
| (To overhaul cast rod weedee boot with PTO drive and cast boot housing)                         |                 |   |                     | 53.                | 616-0800Z                         | Washer, Flat ZP 1/2"      | 3                   |
| •   | <b>711-000F</b> | <b>Overhaul Kit, Rod Weedee Boot (Fab/Hyd.)</b> |                     | 54.                | 615-0800Z                         | Washer, Lock ZP 1/2"      | 3                   |
| (To overhaul fabricated rod weedee boot with hydraulic motor drive and fabricated boot housing) |                 |   |                     | <b>55. 711-012</b> | <b>Bracket, Center 12" O.S.</b>   |                           |                     |
| 41.   | 625-101         | PTO Assy. W/ Shield 1000 RPM                    |                     | 56.                | 601-0808Z                         | Bolt, HCS ZP 1/2 x 2"     | 3                   |
|   | 625-103         | PTO Assy. W/ Shield 540 RPM                     |                     | <b>57. 711-119</b> | <b>Boot Mount Assy., H.C.Beam</b> |                           |                     |
|   | <b>625-101L</b> | <b>PTO Assy. W/ Shield 1.75" x 21 Spline</b>    |                     | 58.                | 602-1016Z                         | Bolt, HCS ZP GR5 5/8 x 4" | 2                   |
| 42.   | 625-110         | Shaft Assy., 1000 RPM                           |                     | 59.                | 602-0808Z                         | Bolt, HCS ZP GR5 1/2 x 2" | 2                   |
|   |                 |   |                     | 60.                | 611-1001Z                         | Nut, Hex ZP 5/8"          | 2                   |
|   |                 |   |                     | 61.                | 616-1000Z                         | Washer, Flat ZP 5/8"      | 8                   |

| Ref.              | P/N                                       | Description                       | Qty. Req. Per Assy. | Ref.              | P/N  | Description                        | Qty. Req. Per Assy. |
|-------------------|---|-----------------------------------|---------------------|-------------------|--|------------------------------------|---------------------|
| <b>A. 811-505</b> | <b>End Drive Kit, Hyd. Rod Weedee</b>     |                                   |                     | 19.               | 607-0602                                   | Set Screw, Socket Head 3/8 x 3/8"  | 1                   |
| <b>B. 711-500</b> | <b>Mount Tube Assy., 2 x 2"</b>           |                                   |                     | 20.               | 626-941                                    | Key, Square 1/4 x 1"               | 1                   |
| 1.                | 711-400                                   | Mount Tube Bkt., 2 x 2"           | 1                   | 21.               | 625-592                                    | U-Joint, 1" Square / 1" Round      | 1                   |
| 2.                | 628-200                                   | Cap, Cast 4" (3/4" BOLTS)         | 1                   | 22.               | 628-608                                    | Yoke, #6 1" Round (1/4" Keyway)    | -                   |
| 3.                | 601-1218Z                                 | Bolt, HCS ZP 3/4 x 4-1/2"         | 2                   | 23.               | 625-601                                    | Bearing, Cross #6 (DRY CAP)        | -                   |
| 4.                | 611-1201Z                                 | Nut, Hex ZP 3/4"                  | 2                   | 24.               | 625-602                                    | Yoke, #6 1" Square (3/8" Pin Hole) | -                   |
| 5.                | 615-1200Z                                 | Washer, Lock 3/4"                 | 2                   | 25.               | 602-0610Z                                  | Bolt, HCS ZP GR5 3/8 x 2-1/2"      | 1                   |
| <b>C. 711-423</b> | <b>Clamp Assy., 2 x 2 x 1-3/8" Round</b>  |                                   |                     | 26.               | 611-0601Z                                  | Nut, Hex ZP 3/8"                   | 1                   |
| 6.                | 628-023                                   | Clamp Body., 2 x 2 x 1-3/8" Round | 1                   | <b>F. 811-510</b> | <b>Direct Drive Kit, Hyd. Rod Wdr.</b>     |                                    |                     |
| 7.                | 604-0808Z                                 | Bolt, Crg. ZP GR5 1/2 x 2"        | 1                   | 27.               | 711-800                                    | Mount Bkt., Direct Drive RW        | 1                   |
| 8.                | 601-0713Z                                 | Bolt, HCS ZP 7/16 x 3-1/4"        | 2                   | 28.               | 711-805                                    | Plate, Hyd. Motor Mount            | 1                   |
| 9.                | 611-0801Z                                 | Nut, Hex ZP 1/2"                  | 1                   | 29.               | 711-815                                    | Coupler, 1" Square to 1" Round     | 1                   |
| 10.               | 615-0800Z                                 | Washer, Lock ZP 1/2"              | 1                   | 30.               | 711-810                                    | Cover Plate, Direct Drive RW       | 1                   |
| 11.               | 611-0701Z                                 | Nut, Hex ZP 7/16"                 | 2                   | 31.               | 711-006                                    | Bracket, Center 6" Offset          | 1                   |
| 12.               | 615-0800Z                                 | Washer, Lock ZP 1/2"              | 1                   | 32.               | 623-030                                    | Seal, Direct Dr. Rod Wdr           | 1                   |
| <b>D. 711-502</b> | <b>Motor &amp; Shank Assy.</b>            |                                   |                     | 33.               | 604-0811Z                                  | Bolt, Crg. ZP GR5 1/2 x 2-3/4"     | 2                   |
| 13.               | 619-028                                   | Motor Hydraulic, 8 C.I.           | 1                   | 34.               | 606-1006Z                                  | Set Screw, Sq. Hd. 5/8 x 1-1/2"    | -                   |
|                   | 619-027                                   | Seal Kit, Hyd. Mtr.(ADN/PRC-ADM)  | -                   | 35.               | 616-0800Z                                  | Washer, Flat ZP 1/2"               | 2                   |
|                   | 619-027B                                  | Seal Kit, Hyd. Mtr.(PRINCE-ABM)   | -                   | 36.               | 617-052                                    | Roll Pin, ZP 3/8 x 2"              | 1                   |
|                   | 619-027C                                  | Seal Kit, Hyd. Mtr.(CHR-LN60540)  | -                   | <b>G. 711-113</b> | <b>Outside RW Bkt. &amp; Brg. 12" O.S.</b> |                                    |                     |
|                   | 619-027D                                  | Seal Kit, Danfoss (OMP Series)    | -                   | 37.               | 711-112                                    | Outside RW Bracket 12" Offset      | 1                   |
|                   | 619-027E                                  | Seal Kit, Danfoss (DH Series)     | -                   | 38.               | 622-100                                    | Flangett, 80MS (622-058 Brg.)      | 2                   |
| 14.               | 711-501                                   | Bkt., Hinge & Shank               | 1                   | 39.               | 622-058                                    | Bearing, 1" Square W208PPB6        | 1                   |
| 15.               | 601-0604Z                                 | Bolt, HCS ZP 3/8 x 1"             | 4                   | 40.               | 601-0806Z                                  | Bolt, HCS ZP 1/2 x 1-1/2"          | 4                   |
| 16.               | 615-0600Z                                 | Washer, Lock ZP 3/8"              | 4                   | <b>H. 711-107</b> | <b>Outside RW Bkt. &amp; Brg. 6" O.S.</b>  |                                    |                     |
| 17.               | 626-012                                   | Key, Woodruff 1/4 x 1"            | -                   |                   | 711-106                                    | Outside RW Bracket 6" Offset       | 1                   |
| <b>E. 711-510</b> | <b>Dive Connector &amp; U-Joint Assy.</b> |                                   |                     | <b>I. 711-109</b> | <b>Bearing Hanger W/Brg. (Hamby)</b>       |                                    |                     |
| 18.               | 711-410                                   | Shaft & Coupler                   | 1                   |                   | 711-108                                    | Bearing Hanger, Hamby Rod Weedee   | 1                   |
|                   |   |                                   |                     | 41.               | 601-0809Z                                  | Bolt, HCS ZP 1/2 x 2-1/4"          | 2                   |



# End Drive Rod Weeder

## (Parts Diagram)



| Ref.      | P/N            | Description                                | Qty. Req. Per Assy. | Ref.              | P/N                                  | Description | Qty. Req. Per Assy. |
|-----------|----------------|--|---------------------|-------------------|--------------------------------------|-------------|---------------------|
| <b>J.</b> | <b>711-111</b> | <b>Bearing Hanger W/Brg. (Roll-A-Cone)</b> |                     | 630-120           | 128" Rod Weeder Rod                  | -           |                     |
|           | 711-110        | Bearing Hanger, Roll-A-Cone Rod Wdr.       | 1                   | 630-121           | 120" Rod Weeder Rod (Two 3/8" Holes) | -           |                     |
| <b>K.</b> | <b>711-102</b> | <b>Outside Bkt. &amp; Brg. Utility RW</b>  |                     | 630-122           | 128" Rod Weeder Rod (Two 3/8" Holes) | -           |                     |
|           | 711-101        | Outside Bracket, Utility Rod Weeder        | 1                   | 630-160           | 168" Rod Weeder Rod                  | -           |                     |
| <b>L.</b> | <b>711-117</b> | <b>Bearing Hanger Assy., H.C. Beam</b>     |                     | 630-161           | 160" Rod Weeder Rod (Two 3/8" Holes) | -           |                     |
|           | 42. 711-116R   | Plate, Brg. Mount H.C. Beam RH             | 1                   | 630-162           | 168" Rod Weeder Rod (Two 3/8" Holes) | -           |                     |
|           | 43. 711-116L   | Plate, Brg. Mount H.C. Beam LH             | 1                   | 630-180           | 180" Rod Weeder Rod                  | -           |                     |
|           | 44. 602-1016Z  | Bolt, HCS ZP GR5 5/8 x 4"                  | 2                   | 630-181           | 180" Rod Weeder Rod (Two 3/8" Holes) | -           |                     |
|           | 45. 611-1001Z  | Nut, Hex ZP 5/8"                           | 2                   | 630-200           | 200" Rod Weeder Rod                  | -           |                     |
|           | 46. 615-1000Z  | Washer, Lock 5/8"                          | 4                   | 630-252           | 252" Rod Weeder Rod                  | -           |                     |
| <b>M.</b> | 630-078        | 40" Rod Weeder Rod (Two 3/8" Holes)        | -                   | <b>N. 711-001</b> | <b>Splice Kit, Rod Weeder Rod</b>    |             |                     |
|           | 630-080        | 80" Rod Weeder Rod (Two 3/8" Holes)        | -                   | 47. 630-170       | Coupler Tube (For 1" Square Rod)     | 2           |                     |
|           | 630-088        | 88" Rod Weeder Rod                         | -                   | 48. 630-079       | Splice, 1 x 1 x 8" (Two 3/8" Holes)  | 1           |                     |
|           | 630-108        | 108" Rod Weeder Rod                        | -                   | 49. 622-190       | Collar, Lock 1" Square               | -           |                     |