

Operator's Manual & Repair Parts Manual



**Do Not Use or Operate This Equipment
Until You Have Read and Understand This Manual**



The purpose of this manual is to explain maintenance requirements and adjustments which are necessary for the most efficient operation of the machine. Read this manual thoroughly and completely before using your machine. Keep this manual handy for reference when questions arise.

Should you have questions or difficulties which your dealer or representative are unable to answer, please call or write:

Bigham Ag
1220 E Durkee St
Carlisle, AR 72024

Telephone: (870) 552-7517
Fax: (870) 552-3303

 **BIGHAM**

BEDPREP

Model BP40F

Dealer Preparation Checklist

Complete the items below before delivering and operating the BedPrep Implement.

- All 3-Point Hitch Pins Installed Properly
- Implement configured to customer's desired row spacing
- Check for sufficient clearance between tractor tires & implement
- All fittings and bearings lubricated
- Gauge wheels configured to desired row spacing
- All wheel nuts checked and tightened on gauge wheels
- Tires inflated to proper pressure
- Drag boards adjusted to proper depth
- Hydraulic hoses of proper length for customer's tractor
- All decals in place and readable
- Operator's manual has been delivered to owner and the owner has been instructed on safe and proper use of the implement

Dealer's Signature _____

Customer's Signature _____

This Checklist is to remain in the Owner's Manual

It is the responsibility of the dealer to complete the procedures listed above before the delivery of this BedPrep Implement to the new owner.

BIGHAM AG EQUIPMENT

A MESSAGE TO THE OWNER AND OPERATOR:

This machine was carefully designed and manufactured to give you dependable service. To keep it running efficiently, read the instructions in this Operator's Manual. Check each item and acquaint yourself with the adjustments required to obtain efficient operation and maximum performance. Remember, the machine's performance depends on how you operate and care for it.

After the operating season, thoroughly clean your machine and inspect it. Preventive maintenance saves time and pays dividends. Your dealer has original equipment parts which assure proper fit and best performance. Record the model number, serial number and date of purchase in the space provided on this page. Your dealer needs this information to give you efficient service when you order parts or attachments. The model number and serial number appear on the identification plate on the front left side of the tool bar mast.

The Warranty on your machine is included with this manual. Your dealer will review both this manual and the warranty with you when you take delivery of your machine.

WARRANTY

Bigham Ag warrants all products of its manufacture to be free from defects in materials and workmanship for a period of six months from date of delivery to the retail purchaser. Parts assumed to be defective must be returned F.O.B. Carlisle, AR for our inspection or inspected in the field by our authorized representative. Our obligation under this warranty is limited to replacement or repair of the defective part and does not cover other damages to persons or property. Other than the aforesaid, no warranties of merchantability or fitness for a particular purpose will apply. We do not assume liability for altered or remanufactured components or machines or applications beyond their intended use. Some states do not allow limitation of how long an implied warranty lasts, or exclusions of, or limitations on relief such as incidental or consequential damages, so the above limitations or exclusion may not apply to you. This warranty gives you specific legal rights and you may have other rights which vary from state to state.

Warranty does not cover damage due to abuse, neglect, collision, towing, pulling, normal wear and tear or any other factor beyond the control of the manufacturer. Tool bars that are bent, bowed or that have been welded on or modified in any way are specifically excluded from any warranties.

Manufactured By
Bigham Brothers Inc. – Carlisle, AR

Model # _____

Serial # _____

Introduction

The Bigham BedPrep provides the flexibility of accommodating four row spacings; 16 Row 30", 12 Row 36", 12 Row 38", and 12 Row 40" with a patent pending feature that allows the operator to convert between configurations with no additional parts and less than an hour's labor.

Standard Features

- 40' over-fold frame consisting of a heavy duty 7x7 steel main frame with a fully welded 3.5 x 3.5 secondary frame.
- Shipped set up in one of two configurations: 12 Row 36" and 12 Row 38" or 12 Row 40" and 16 Row 30".
- 39.5' operating width
- 11.5' folded transport height
- 23.5' folded transport width
- Category 3/4N hitch
- 17" chopper baskets with 5 replaceable beveled spiral blades
- Floating or locked wing option
- 5 bar harrow with 5.25" staggered spike spacing with 11" hardened and adjustable spikes
- Reversible leveling boards mounted on 1/2" thick fabricated brackets for durability with three adjustment settings
- 4x48" hydraulic actuators
- High clearance gauge wheels



Inboard offset of chopper blades:
12 Row 38" or 12 Row 36"



Outboard offset of chopper blades:
12 Row 40" or 16 Row 30"

Operator's Responsibility



Most accidents are caused because of neglect or carelessness. Avoid needless accidents by following all of the safety precautions listed below.

The user is responsible for inspecting the BedPrep Implement before each use and for having necessary repairs done to prevent further damage to the unit. It is the responsibility of the user to read the owner's manual and understand the safe and correct operating procedures for this unit.

- The operator of this BedPrep must read and understand the material contained in this manual.
- The BedPrep should be operated by those responsible and authorized by the owner to do so.
- Only a qualified operator should be permitted on the tractor when the BedPrep is in operation. No riders should be allowed on the unit.
- Make certain everyone is clear before folding or unfolding the wings of the folding unit.
- Never allow anyone on the BedPrep for any reason while tractor is running.
- Do not transport the BedPrep on a public road unless the wings of the folding unit are in the transport position. Also, ensure that the slow moving vehicle emblem is in place.
- Carefully maintain control of the BedPrep when traveling on roads. Avoid speeds over 8 MPH and take curves slowly.
- Stop the tractor engine before doing any maintenance or repairs to the unit.
- Use caution when working with the hydraulic system. Hydraulic fluid can be under extreme pressure and can cause infection or other serious personal injury.
- Avoid transporting near electrical lines when the wings of the folding unit are in the folded (up) position. Serious injury or death can result from contact with electrical lines. **USE EXTREME CARE!**
- Make sure your tractor front end has adequate counter-weight.



Failure to properly counter-balance the weight of the BedPrep can cause the tractor to overturn resulting in severe injury or death. If you are unsure how much front-end weight to add, consult your dealer.

- Use caution when crossing ditches, levees, etc., or when using on uneven terrain.
- Never allow anyone to play on or around the BedPrep.
- Baskets on the unit can roll and cause injury.
- Use extreme caution when changing bearings or handling chopper baskets. **WORN BLADES CAN BECOME VERY SHARP.**
- Do not attempt to remove any obstruction while the unit is in operation.

Operating Instructions

- Grease wing hinge pins and bearings daily.
- Extend the wings. Use care when folding and unfolding the wings. Make sure no one is close to the wings. DO NOT fold wings when close to any electrical lines. DO NOT try to extend or fold the wings while anyone is near the unit.
- Make sure the BedPrep is slightly elevated before raising/lowering wings to insure the chopper baskets do not hit the ground causing possible damage to the baskets, shaft and/or bearings.
- It is advisable to return the tractor to idle before folding the wings of the folding BedPrep. Ensure all wing lock pins are removed before folding the wings.
- The wings can either be locked in the level position by use of the one inch lock pins or allowed to float without the use of lock pins and the cylinders set to float.
- The BedPrep should be run level, adjust the harrow chains and drag boards accordingly.
- The terms “Left” and “Right” should be understood as a position from behind the BedPrep and facing the unit.
- RH & LH wing chopper baskets should be understood as a position from behind the BedPrep, facing the unit, and the unit being configured for 12 row 38”/36” beds.

WHEN ATTACHING QUICK HITCH



Top pin is for stability purposes only and must have sufficient clearance for lower pins to carry weight. If sufficient clearance is not allowed, tractor damage, implement damage or personal injury may occur!!!

Tractor Hook-Up

Remove or slide the tractor drawbar to one side before hooking the BedPrep to the tractor. The unit has three point linkage hook-up for Cat. 3/4N tractors. Check for sufficient clearance between rear tractor tires and unit chopper baskets in the raised position. Raise and lower the unit slowly with the tractor to check front end stability of the tractor before transporting the unit. Raise and lower the wings before transporting. **MAKE SURE NO ONE OR ANYTHING IS CLOSE TO THE BEDPREP BEFORE ATTEMPTING ANY OF THESE OPERATIONS!!**

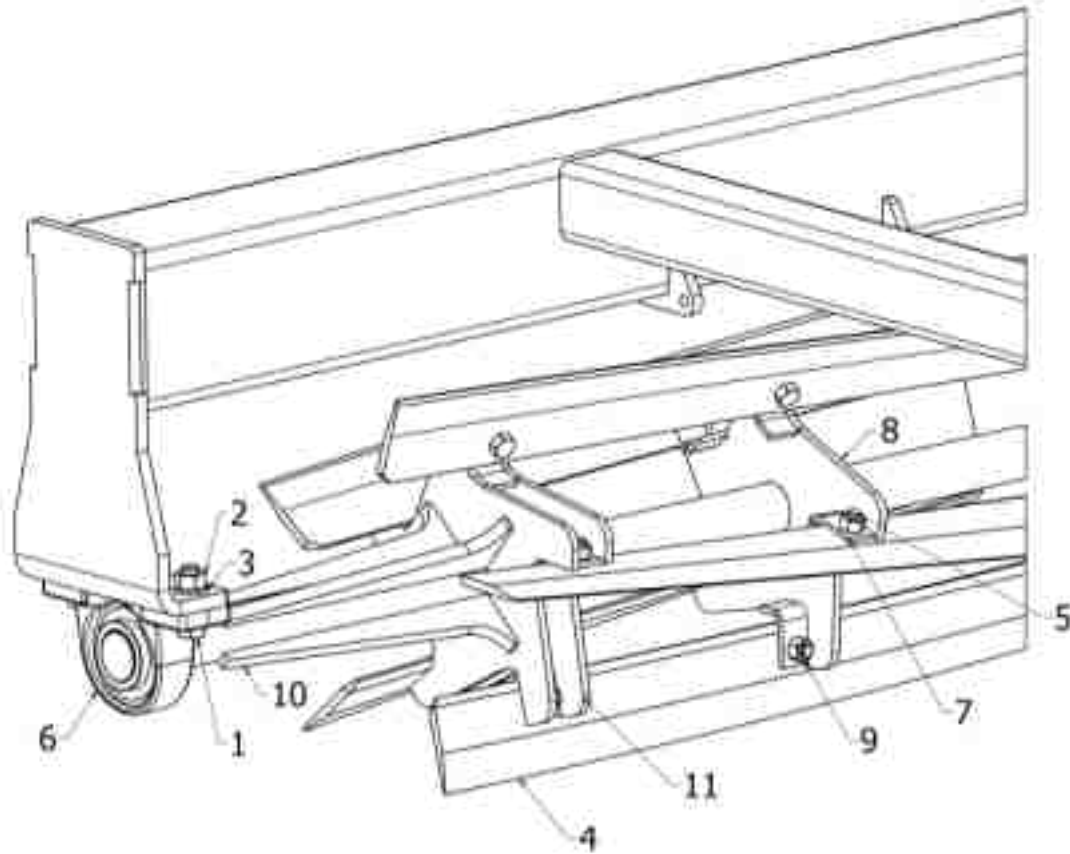
ALWAYS CHECK YOUR THREE POINT LINKAGE PINS CONNECTING THE BEDPREP TO THE TRACTOR TO MAKE SURE THEY ARE PROPERLY SECURED AND NOT DAMAGED. FAILURE TO PROPERLY SECURE THE THREE POINT LINKAGE PINS COULD RESULT IN SERIOUS INJURY TO THE OPERATOR OR DAMAGE TO THE TRACTOR OR UNIT.

Storage Stand Use

The adjustable storage stands on the back of the BedPrep are designed to be used when the unit is not in field operation. FAILURE TO PROPERLY RAISE AND PIN THE STORAGE STANDS WILL RESULT IN DAMAGE TO THEM WHEN OPERATING THE BED PREP.

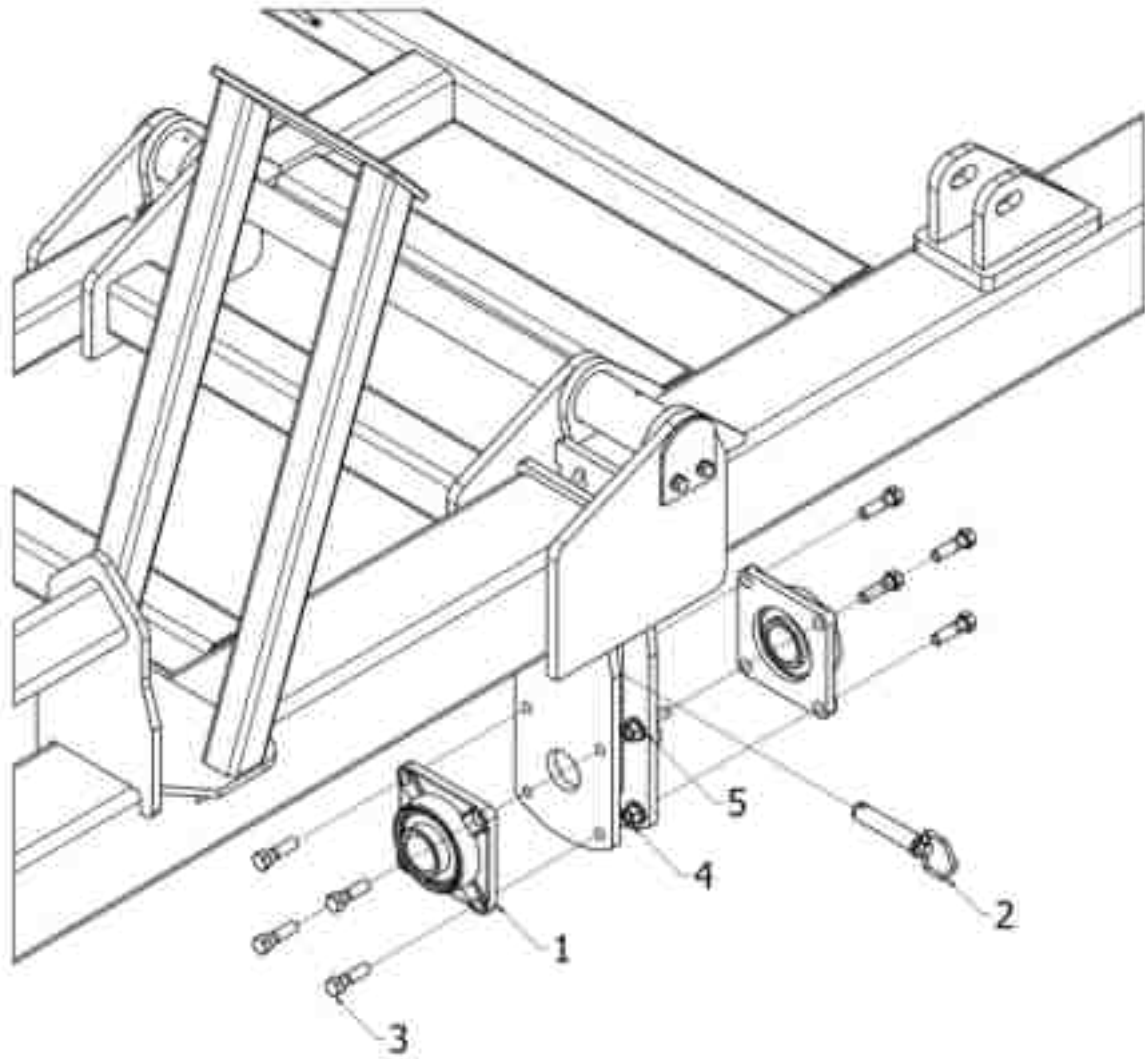
Chopper Basket Assembly

Each wing chopper basket consists of 5 beveled blades bolted in place, a four bolt flange bearing, and a two bolt pillow block bearing. Each center chopper basket is secured by two flange bearings. Chopper blades can be replaced, if necessary, by detaching the old blade and installing a new one. Grease bearings daily.



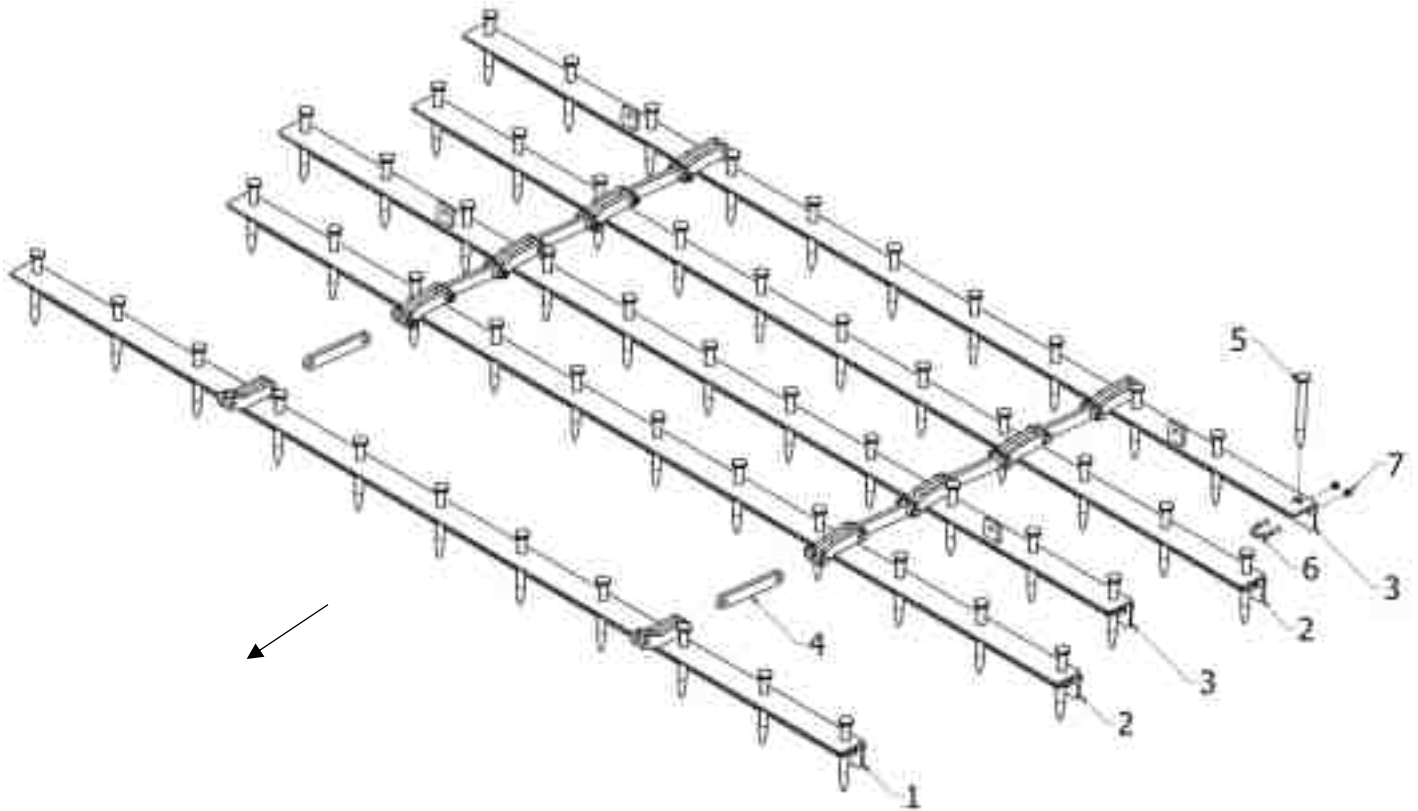
Item	Part #	Description
1	602-1210Z	Bolt, Hex 3/4 – 10 x 2.50
2	613-1200Z	Nut, 3/4 -10 Nyloc
3	616-1200Z	Washer, 3/4 Flat
4	901522-40BP	102” Chopper Blade
5	602-1006Z	Bolt, Hex 5/8-11 x 1.5
6	H622-215	2.25” Pillow Block Bearing
7	H310-900	Spider Clip
8	H320-004	Spider Plate
9	613-1001Z	Nut, 5/8-11 Center Lock
10	D310-208	Chopper Gusset
11	H320-807	Spider Plate Assembly

Chopper Basket Flange Bearings



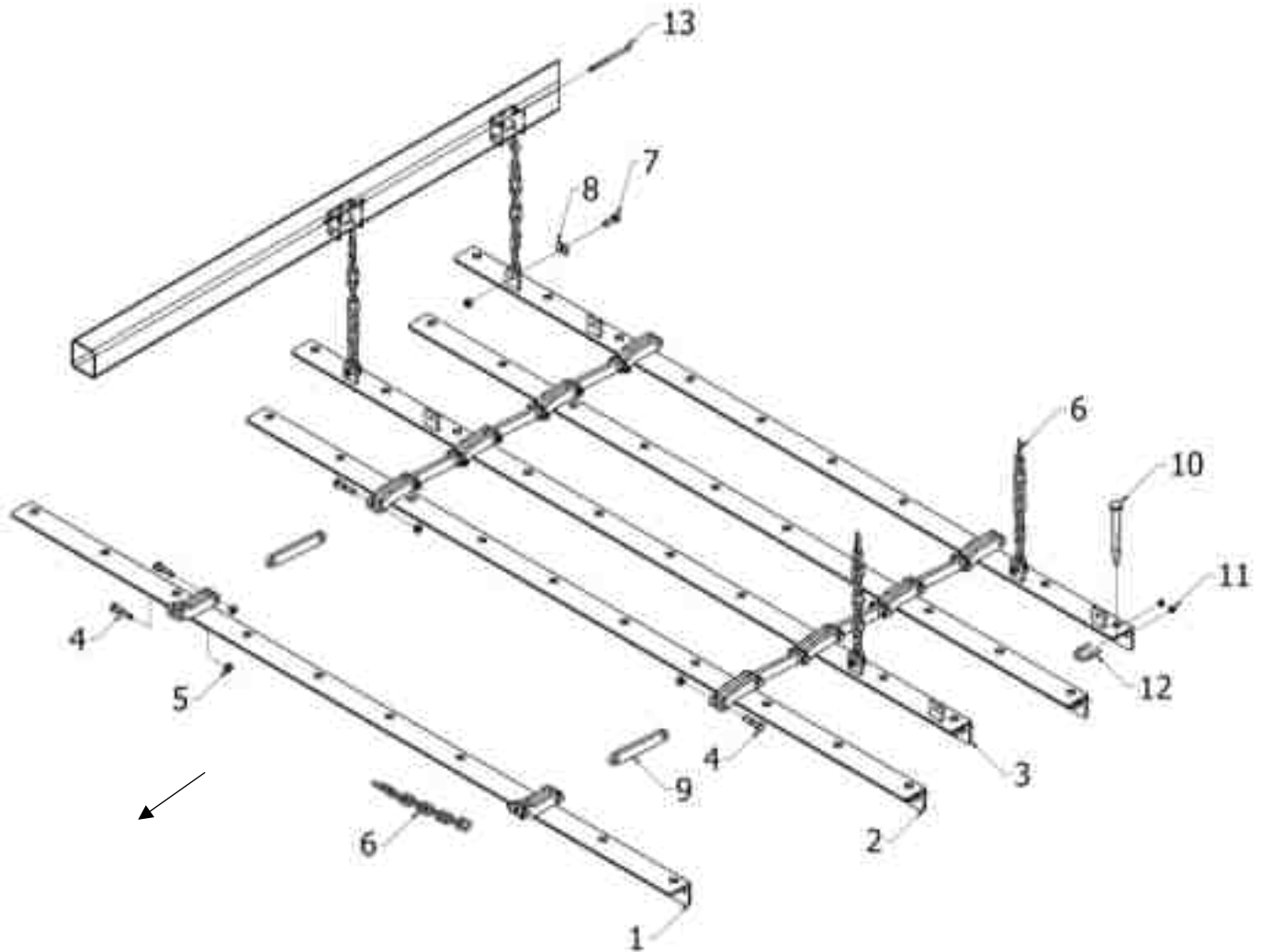
Item	Part #	Description
1	H622-212	2.25 Flange Bearing
1 Alternate	H622-212-3	2.25 Flange Bearing, Triple Seal
2	230131	Pin, 1.0 x 4.75
3	602-1010Z	Bolt, Hex 5/8-11 x 2.5
4	613-1000Z	Nut, 5/8 – 11 Nyloc
5	616-1000Z	Washer, 5/8 Flat

Center Harrow Gang Assembly



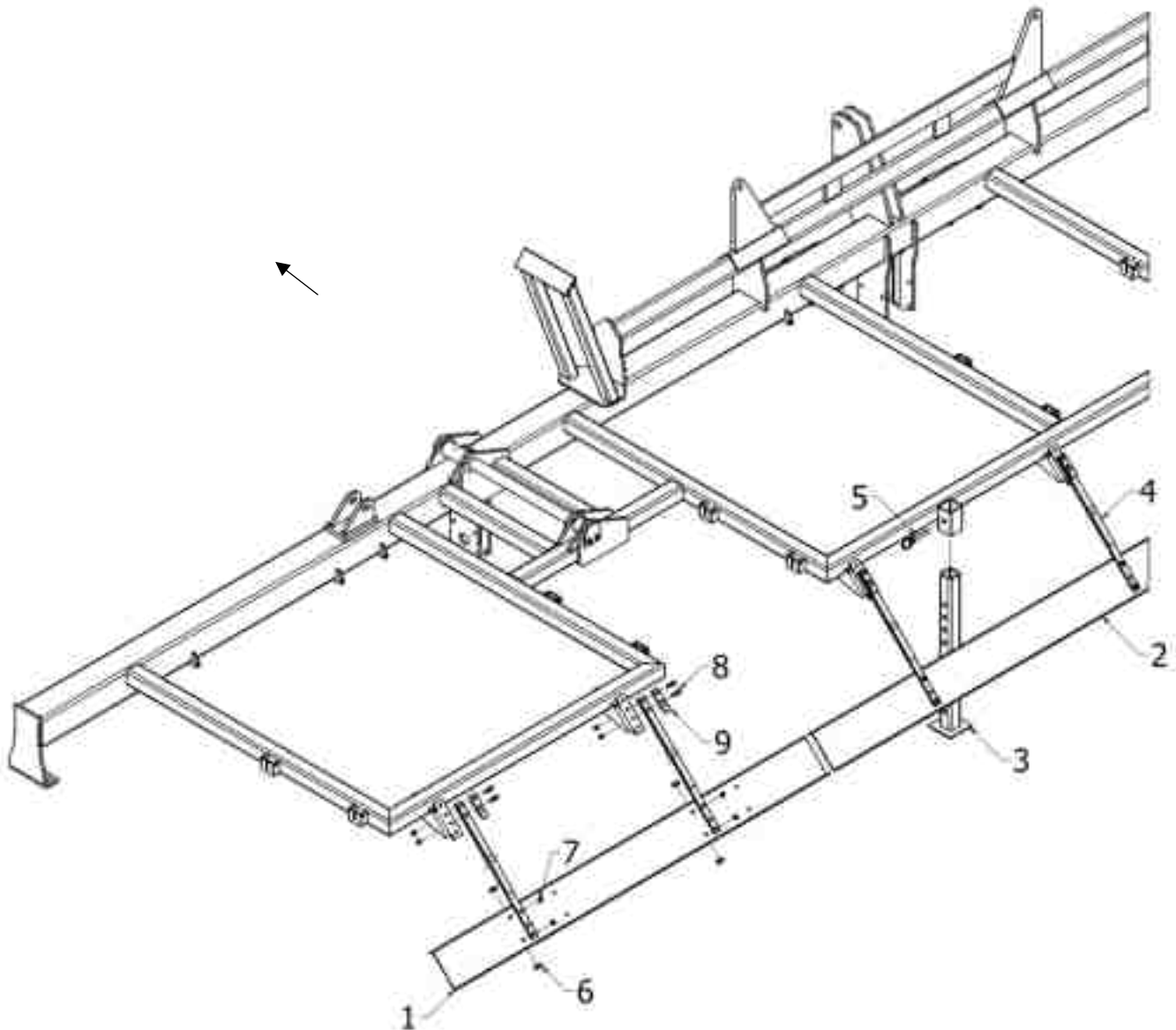
Item	Part #	Description
1	D686-105	Harrow Sub-Assembly, Center Front Bar
2	D686-104	Harrow Sub-Assembly, Center Secondary Bar
3	D686-103	Harrow Sub-Assembly, Center Tabbed Bar
4	D310-005	Harrow Linkage
4 Alternate	D310-002	<i>Harrow Linkage – Prior to April 2015</i>
5	636-011	Harrow Spike, 11” Hardened
6	610-0003	U-Bolt, 3/8 x 3/4
7	613-0600Z	Nut, 3/8 – 16 Nyloc

Wing Harrow Gang Assembly



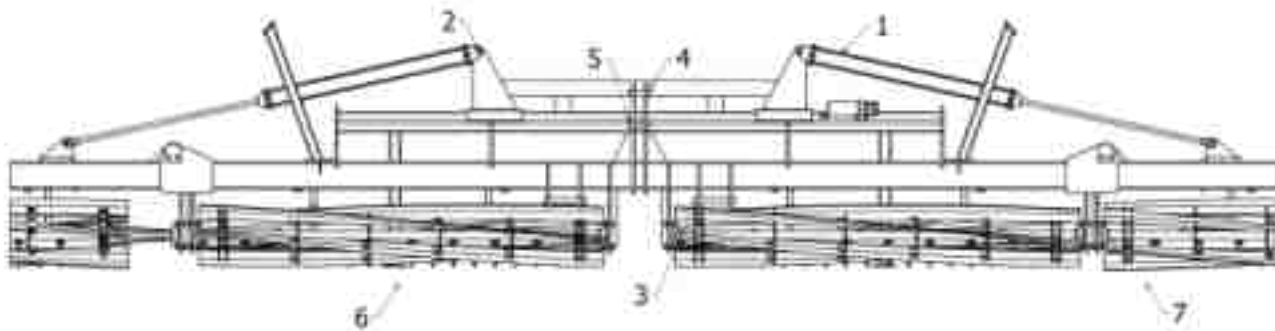
Item	Part #	Description
1	D686-100	Harrow Sub-Assembly, Wing Front Bar
2	D686-101	Harrow Sub-Assembly, Wing Secondary Bar
3	D686-102	Harrow Sub-Assembly, Wing Tabbed Bar
4	200239	Bolt, Hex 1/2-13 x 2.25 Grade 8
5	613-0800Z	Nut, 1/2 – 13 Nyloc
6	452100	Chain, 3/8 Grade 43, Zinc
7	602-0808Z	Bolt, Hex 1/2 – 13 x 2.00
8	615-1500	Washer, Rectangular 1/2"
9	D310-005	Harrow Linkage
9 Alternate	D310-002	Harrow Linkage – Prior to April 2015
10	636-011	Harrow Spike, 11" Hardened
11	613-0600Z	Nut, 3/8 – 16 Nyloc
12	610-0003	U-Bolt, 3/8 x 3/4
13	230113	Pin, 3/8 x 5.50 w/Cotter Pin

Drag Board Assemblies

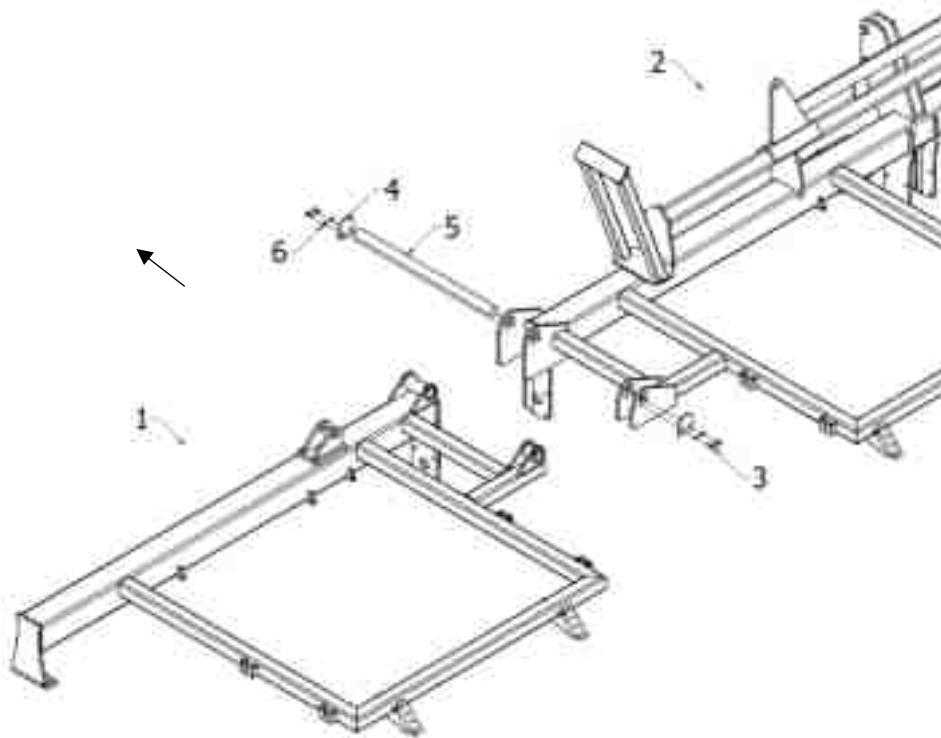


Item	Part #	Description
1	636-120	Wing Drag Board
2	636-121	Center Drag Board
3	636-975	Stand Assembly
4	633-070	Leaf Spring
5	H617-003	3/4 x 4.5 Clevis Pin
6	602-0806Z	Bolt, Hex 1/2 -13 x 1.5
7	613-0800Z	Nut, 1/2 -13 Nyloc
8	200239	Bolt, Hex 1/2 -13 x 2.25
9	D310-213	Leaf Spring Tab

Miscellaneous

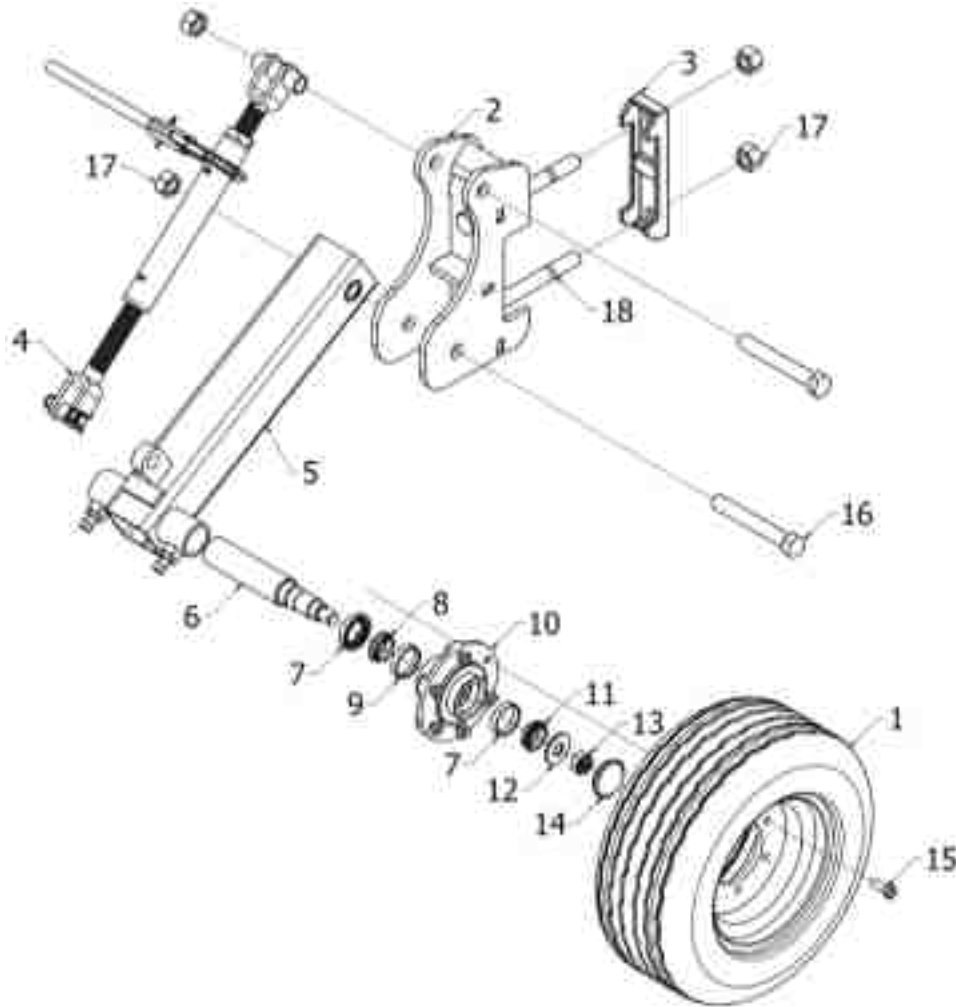


Item	Part #	Description
1	619-420	Cylinder, Hydraulic 4 x 48" Tie Rod
2		Pins, Cylinder
3	H617-196	Hitch Pin, Lower
4	D617-190	Hitch Pin, CAT4
5	D617-191	Hitch Pin, CAT3
6	H687-106	Chopper Basket Assembly, Center
7	D687-115	Chopper Basket Assembly, LH Wing
8	D687-115B	Chopper Basket Assembly, RH Wing



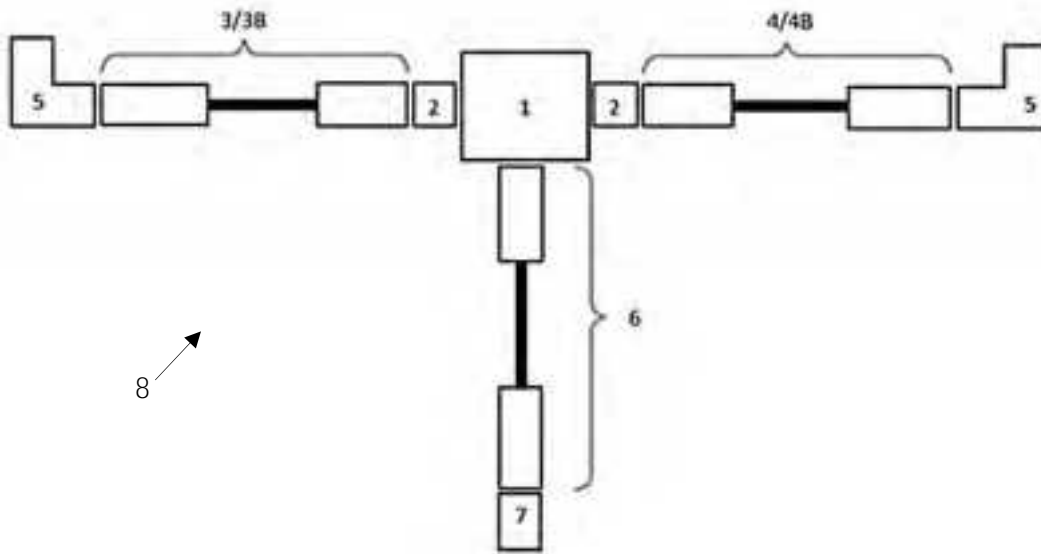
Item	Part #	Description
1	D702-200	LH Wing Frame Assembly
1B	D702-201	RH Wing Frame Assembly (Not Shown)
2	D702-100	Center Frame Assembly
3	602-0804Z	Bolt, Hex 1/2-13 x 1
4	H310-141	Hinge Cap
5	H617-042	2.25" Hinge Pin
6	615-0800Z	Washer, 1/2" Lock

Gauge Wheel Assembly



Item	Part #	Description
1	705-006	Wheel & Tire, 6 Hole, 20.5 x 8.0-10.0
2	705-064	Bracket, GW 7" High-Clearance
3	628-308	Cap, 7" Bar, 1" Bolt Hole
4	705-083	Turnbuckle, GW
5	705-029	Shank, 24" Universal GW
6	627-264	888 Spindle ONLY
7	623-002	Seal, 888
8	622-009	Bearing, Inner Cone 888
9	622-006	Cup, Outer 888
10	627-159	888 Hub
11	622-007	Bearing, Outer Cone 888
12	616-1400	Bushing, 2.25 OD x .935 ID x .165
13	614-1407	Nut, Spindle 888
14	627-560	Hub Cap, 888
15	607-0805P	Bolt, Lug 1/2 x 1.25
16	602-1628Z	Bolt, 1" x 7" Zinc
17	611-1601Z	Nut, 1" Zinc
18	609-1640Z	Bolt, 1" x 10" Zinc

Hydraulic Assembly



Item	Part #	Description
1	400130	1/2" Female NPT Steel Union Tee
2	400141	3/8" Male JIC 37DEG x 1/2" Male NPT
3	D621-045	1/4" Cylinder Line Assembly, 45" Length
3B	D621-095	1/4" Cylinder Line Assembly, 95" Length
4	D621-050	1/4" Cylinder Line Assembly, 50" Length
4B	D621-100	1/4" Cylinder Line Assembly, 100" Length
5	400128	3/8" MJIC x 1/2" Male 90DEG Elbow
6	D621-060	1/2" Line Assembly, 60" Length
7	400145	Hydraulic Coupling, Quick Disconnect
8	D621-001	Hydraulic Assembly, Complete

Quick Reference Parts List

Gauge Wheel Assembly

855-782	High Clearance Gauge Wheel Assembly
705-083	Turn Buckle
705-064	Bracket, GW 7" High Clearance
627-160	Hub Assembly w/Bearings, Seals, Cap
628-308	Cap, CW 7" Bar
705-006	Wheel & Tire, 6 Hole, 20.5 x 8.0-10
705-029	Shank, Universal

Bearings

H622-212	Bearing, Flange 2.25 4-Bolt	
<i>H622-212-3</i>	<i>Bearing, Flange 2.25 4-Bolt Triple Seal</i>	<i>Alternate</i>
H622-215	Bearing, Pillow Block 2.24 2-Bolt	

Drag Boards

636-121	Center Drag Board
636-120	Wing Drag Board
633-070	Leaf Spring
D310-213	Leaf Spring Tab

Harrow Assemblies

D686-200	Harrow Gang Assembly, Center
D686-201	Harrow Gang Assembly, Wing
636-011	Harrow Spike, 11" Hardened

Chopper Basket Assemblies

H687-106	Chopper Basket Assembly, Center
D687-115	Chopper Basket Assembly, LH Wing (Configured as 12 Row 36 / 12 Row 38)
D687-115B	Chopper Basket Assembly, RH Wing (Configured as 12 Row 36 / 12 Row 38)

Cylinders

619-420	Cylinder, Hydraulic 4x48" Tie Rod
617-188	Pin, Clevis 1.00 x 4.44 Effective Length
617-053	Pin, Roll 7/16 x 2.25

Hitch Pins

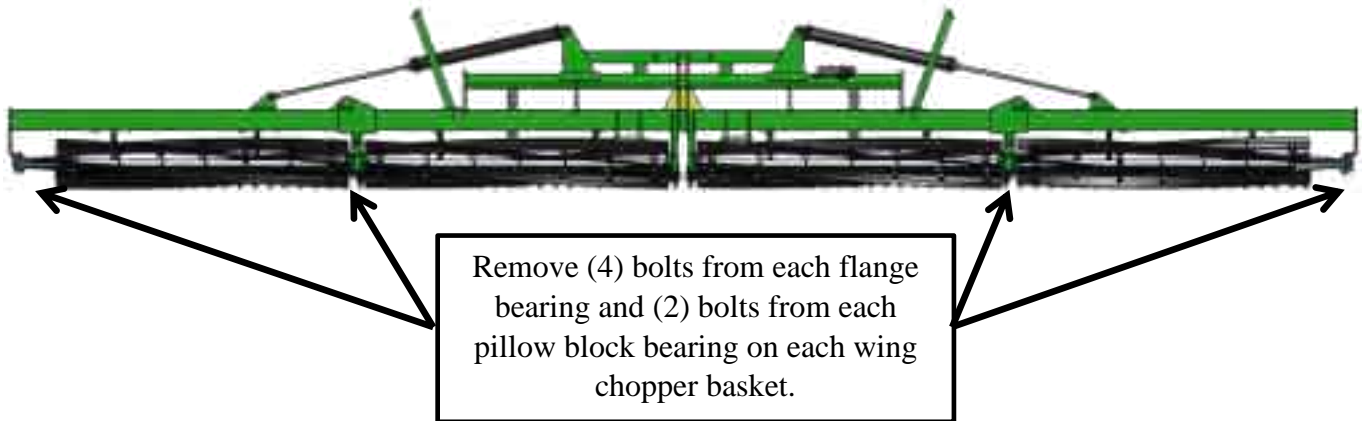
H617-196	Hitch Pin, Lower
H617-254	Bushing, Lower CAT3 to CAT4
D617-190	Hitch Pin, CAT4
D617-191	Hitch Pin, CAT3

Hydraulic Assembly

D621-001	Hydraulic Assembly, Complete
----------	------------------------------

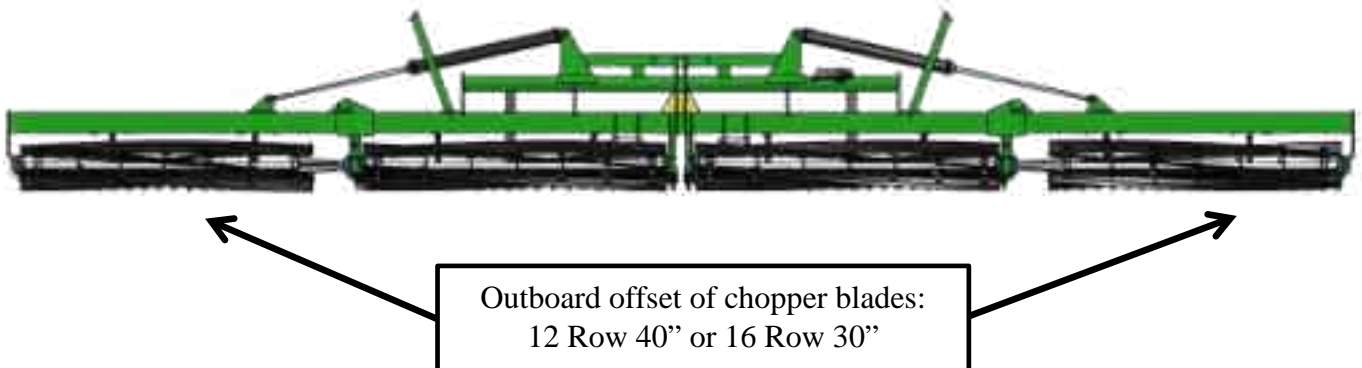
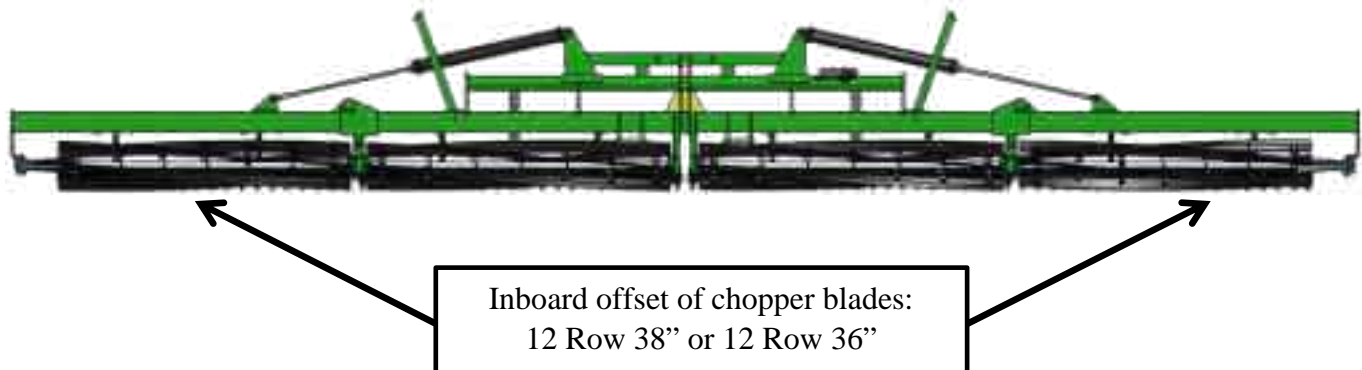
Reconfiguration Procedure

1.1. Remove the (6) bearing bolts used to attach each wing chopper basket.

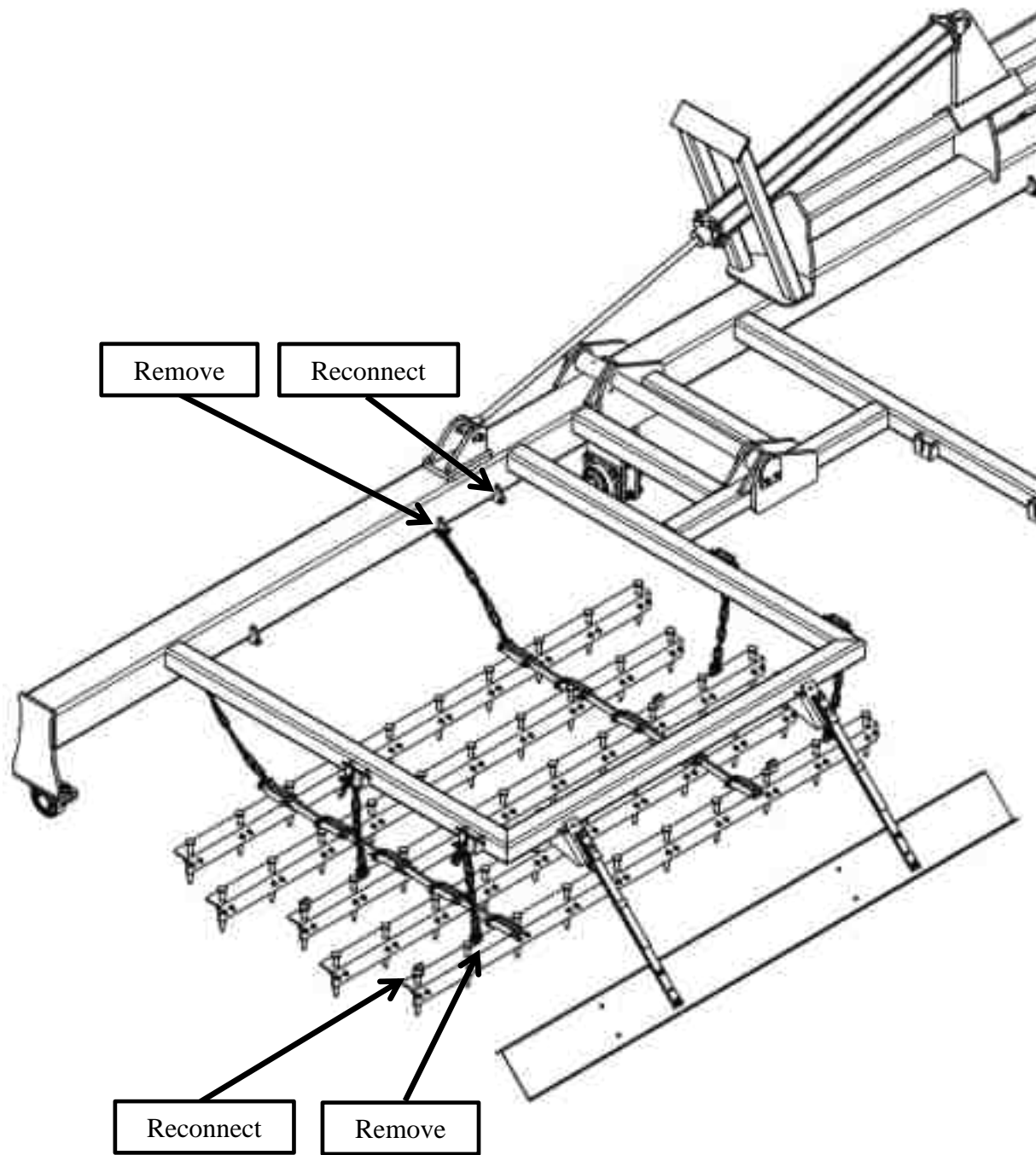


1.2. Move the left chopper basket to the right wing of the unit and the right chopper basket to the left wing of the unit.

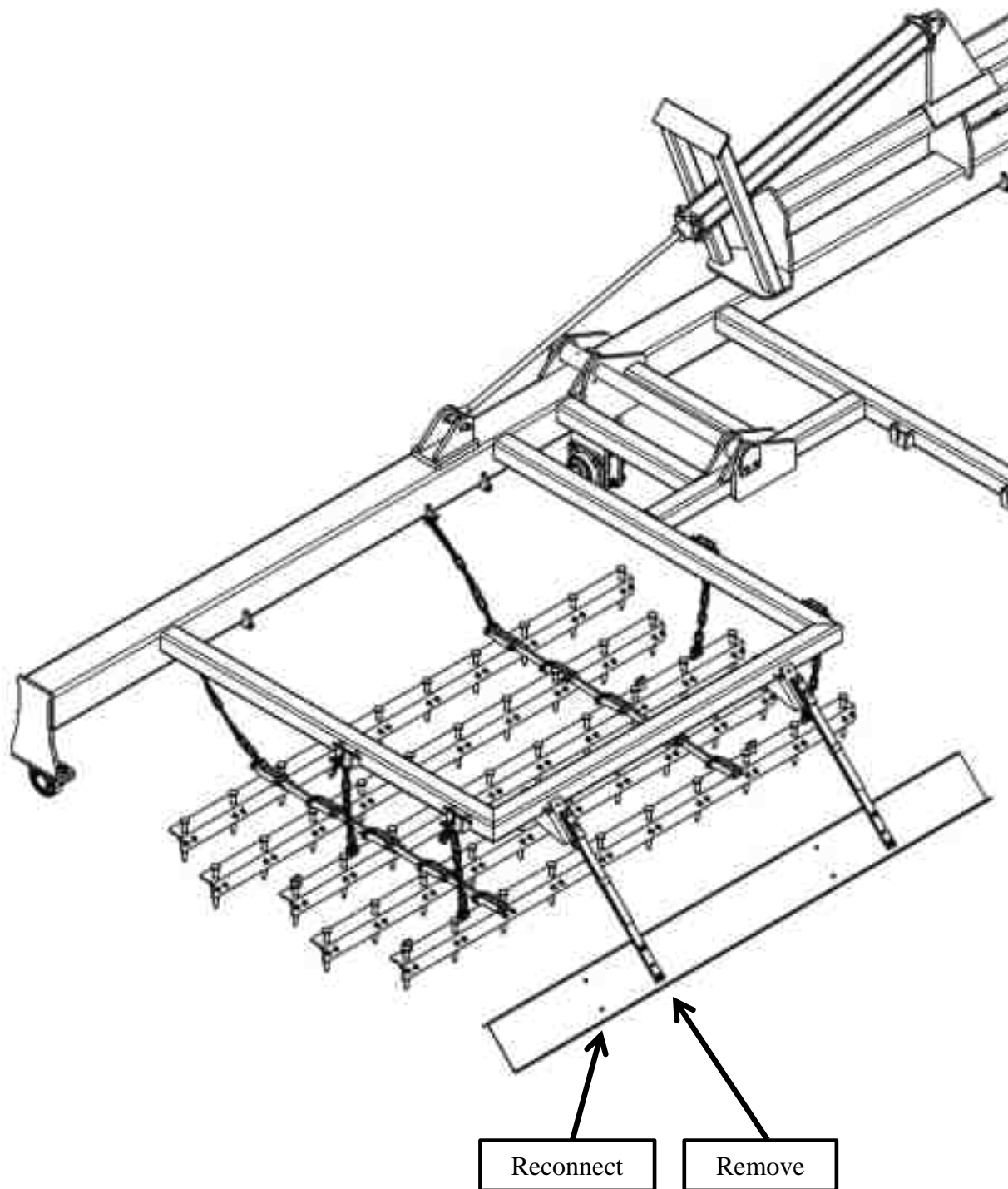
1.3. Ensure the wing chopper blades are located either inboard or outboard of the 12 inch offset of chopper shaft depending on desired row spacing. See below images.



- 1.4. Remove the (4) bolts connecting the vertical chains to each wing harrow gang as well as the (2) bolts connecting the pulling chains to the main frame.
- 1.5. Reconnect the chains to the alternate tabs offset 12" from the previous mount setting. Adjust the vertical chains so that the harrow spikes are at ground level when the chopper baskets are at ground level to allow for the harrow gang to flex during operation.



1.6. Remove the (4) bolts connecting each of the wing drag boards to the leaf springs and relocate the wing drag boards and bolts to the alternate holes.



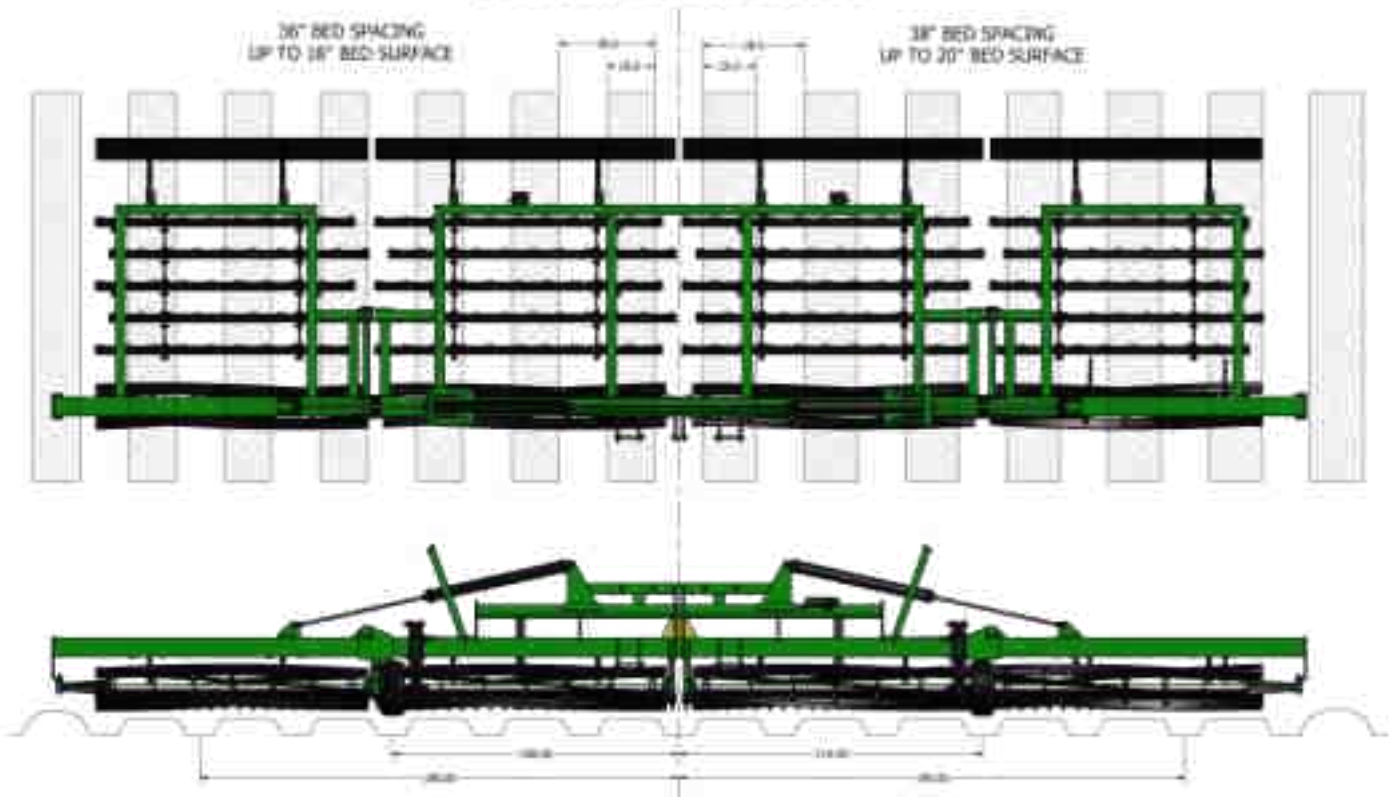
1.7. Ensure the harrow gangs and drag boards are aligned directly behind each chopper element.

1.8. Align gauge wheels according to figures below.

INBOARD OFFSET OF WING CHOPPER BASKETS

36" BED SPACING
UP TO 18" BED SURFACE

38" BED SPACING
UP TO 20" BED SURFACE



OUTBOARD OFFSET OF WING CHOPPER BASKETS

30" BED SPACING
UP TO 12" BED SURFACE

40" BED SPACING
UP TO 22" BED SURFACE

